

2,119,082 hectares from **273** concessions displayed

Show concession areas by:

Ownership

Show Crop

Select ownership:

☒ Cambodian ☒ Vietnamese ☒ Chinese ☒ Malaysian ☒ Thai ☒ Korean ☒ Singaporean ☒ Other ☒ Unknown

Select crop:

☒ Rubber ☒ Rubber (Mixed) ☒ Sugar ☒ Paper Pulp ☒ Cassava ☒ Palm Oil ☒ Other ☒ Unknown

BACKGROUND

In May 2012, the Prime Minister signed a directive declaring a moratorium on the granting of new Economic Land Concessions (ELCs). The directive also contained the announcement of a systematic review of ELCs. However, so far the government has yet to fully disclose the extent of its grand land giveaway.

To date, the Ministry of Agriculture, Forestry and Fishery has published an oversimplified and incomplete list of companies; the Ministry of Environment has done even less, simply releasing the total number of companies involved and the total land area leased. Neither has disclosed the exact location of the 2.1 million hectares of Cambodian land covered by existing ELCs. A proper review can only be carried out if the government fully disclose all its land dealings to the public.

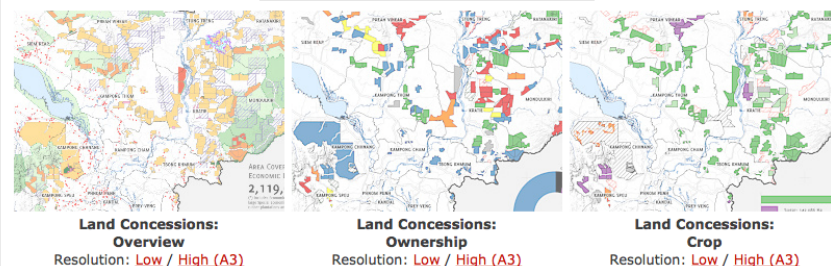
LICADHO is releasing its land concession dataset and renewing its call for the government to fully disclose all concessions. We hope the information can help progress the debate on the ELC scheme and its impacts. ([ផែនទីដីសាងសង់](#))

Caveat: LICADHO has collected and managed data on land concessions for over five years, however, due to the government's continued lack of transparency, it remains incomplete and may contain some inaccuracies. Crop data is collected from concession documents as well as field surveys. Not all concessions have been fully put to their stated use.

Share on Facebook

Tweet It

STATIC MAPS & SPATIAL DATA



For those interested in the spatial data of land concessions featured on this page, you can download it in multiple formats: [Shapefile](#), [Google Earth's KML](#), or [GeoJSON](#).