

USDA Foreign Agricultural Service

GAIN Report

Global Agricultural Information Network

THIS REPORT CONTAINS ASSESSMENTS OF COMMODITY AND TRADE ISSUES MADE BY
USDA STAFF AND NOT NECESSARILY STATEMENTS OF OFFICIAL U.S. GOVERNMENT
POLICY

Voluntary Public

Date: 2/24/2016

GAIN Report Number: BM 5017

Burma - Union of

Post: Rangoon

Beans and Pulses Trade 2015

Report Categories:

Grain and Feed

Approved By:

Rey Santella, Agricultural Attaché

Prepared By:

Swe Mon Aung, Agricultural Specialist

Report Highlights:

BM 5017: Myanmar exported 1.54 million metric tons of beans and pulses in 2015, up 25 percent from the previous year due mainly to higher demand from India. Strong export demand resulted in higher domestic prices for all beans, especially Matpe in 2015. Prices for Matpe reached a record high in November 2015 when domestic supplies declined and demand for Matpe seeds increased.

General Information:

Trade:

Myanmar's bean and pulse exports are composed of official exports primarily via ocean transportation and unofficial exports through land borders (mainly to India and China). Myanmar exported 1.54 million metric tons (MMT) of beans and pulses in 2015 (January-December). According to the Ministry of Commerce, approximately 80 percent of Myanmar's total bean and pulse exports in 2015 were shipped to India. Black Matpe, Green Mung and Toor Whole beans accounted for 80 percent of the varieties exported.

Official exports of beans and pulses to India peaked at nearly 200,000 metric tons (MT) in May 2015 when concerns about delayed rainfall in southern and western parts of the country prompted Indian officials to increase imports from Myanmar. Pulse exports gradually declined in September and October as new-crop pulse and bean supplies in India began to enter the market.

Border exports of beans and pulses along the Myanmar and India border totaled 284, 262 MT in 2015 (Table 1).

Market Overview

Strong export demand, particularly from India and China, led domestic prices for all types of beans and pulses to increase sharply in 2015. Matpe bean prices in Mandalay (largest market for pulses) steadily increased between January and November and reached a 20-year record high at US\$1,640/MT in October when domestic supplies dwindled and demand for Matpe seeds for sowing increased.

Domestic prices for Toor Whole beans also increased in 2015 and surpassed Mapte prices in August and September. Prices eventually declined in December due to the arrival of new crop supplies into the domestic market. Domestic prices for Mung bean also rose minimally.

Table 1. Bean and Pulse Exports in 2014 and 2015 (Metric Tons)

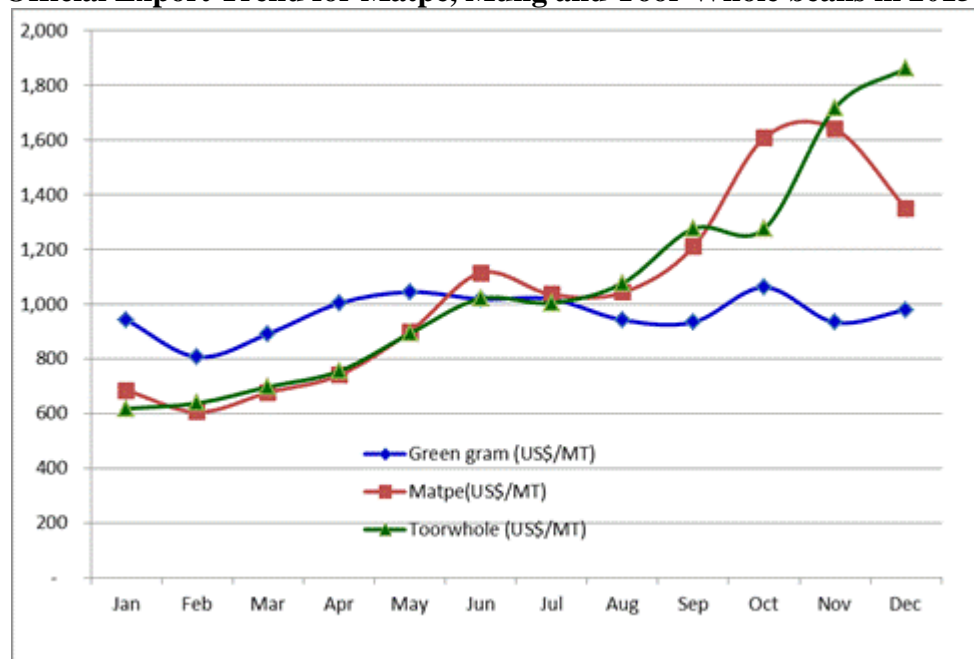
Month	2014			2015		
	Non-border	Border	Total	Non-border	Border	Total
January	75,197	8,942	84,139	81,183	12,247	93,430
February	90,314	13,382	103,696	98,344	22,439	120,783
March	170,803	25,957	196,760	370,779	67,383	438,162
April	88,852	9,706	98,558	131,609	20,493	152,102
May	142,999	24,242	167,241	197,287	23,290	220,577
June	68,893	28,892	97,785	134,363	22,141	156,504
July	69,229	41,014	110,243	64,526	24,207	88,733
August	69,498	11,910	81,408	71,553	23,441	94,994
September	57,217	9,065	66,282	29,936	7,126	37,062
October	48,900	8,821	57,721	34,319	4,273	38,592
November	75,998	6,378	82,376	18,543	4,221	22,764
December	72,091	11,511	83,601	5,639	71,553	77,192
Total	1,029,991	199,820	1,229,810	1,238,081	302,814	1,540,895

Source: Ministry of Commerce, Myanmar Custom Department

Reference exchange rate in December, 2015: One US\$= Kyat 1,295

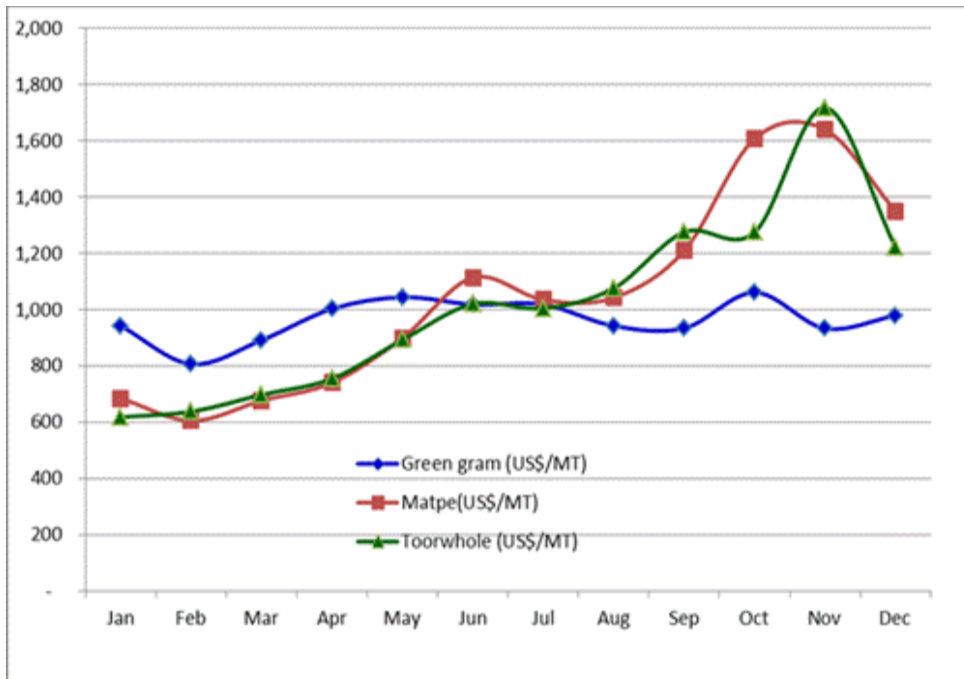
Source: Central Bank of Myanmar

Official Export Trend for Matpe, Mung and Toor Whole beans in 2015 (MT)



Source: Ministry of Commerce, Myanmar Custom department, Central Statistical Organization

Monthly Prices for Selected Beans and Pulses in 2015 (US\$/MT)



Source: Commerce Journal.

Note: Price are taken from Mandalay Crop Exchange Centre

Export Prospect

Myanmar exported 1.54 million metric tons of pulses in 2015, up 25 percent from the same period last year. Bean and pulse exports are likely to increase during January and February 2016 due to new crop supplies entering the domestic market.