

Forestry Legality Compendium as a Tool for Timber Legality Development and Supply Chain Control for Production Forest

Khamfeua SIRIVONGS
Department of Forestry,
Ministry of Agriculture and Forestry

Background

- The regulatory framework governing forestry sector diverse and extensive in a number of legal instruments.
- But, a bit lack of clarity, and a bit overlap, inconsistency, etc.
- Involvement in REED+, FLEGT/VPA with EU, other bilateral and international obligations.
- Requirement of clarity in the forestry legal framework.

Forestry Legality Compendium

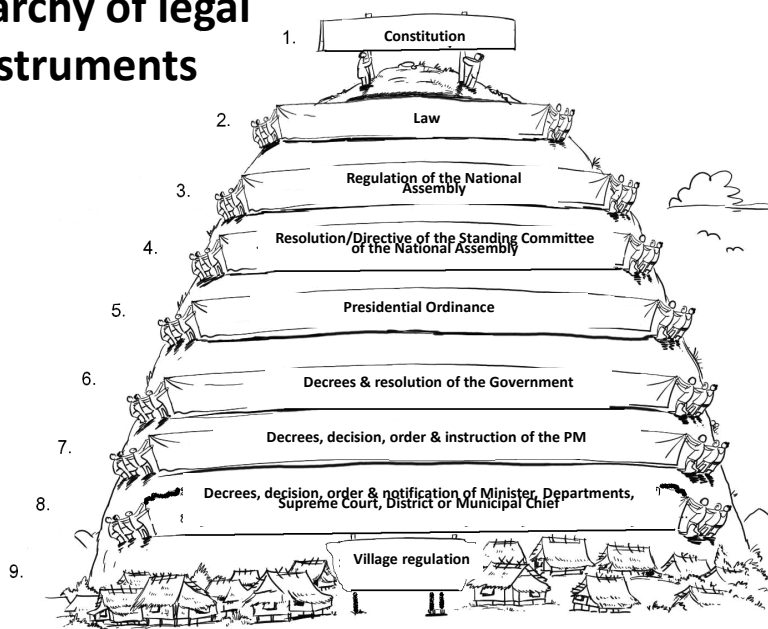
(Joint Initiative DOF/DOFI, FAO, WB/SUFORD, GIZ ProFLEGT)

Scope of the Review:

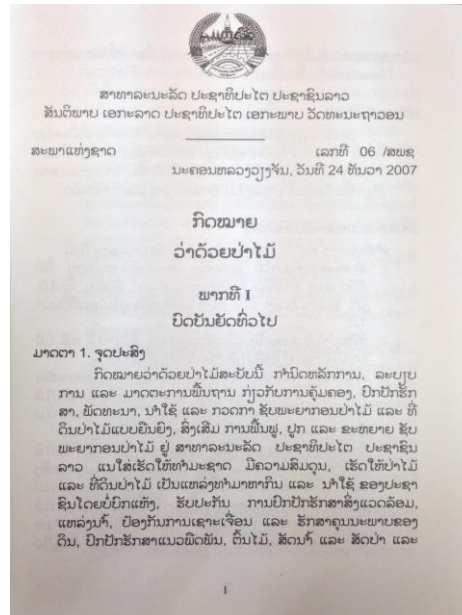
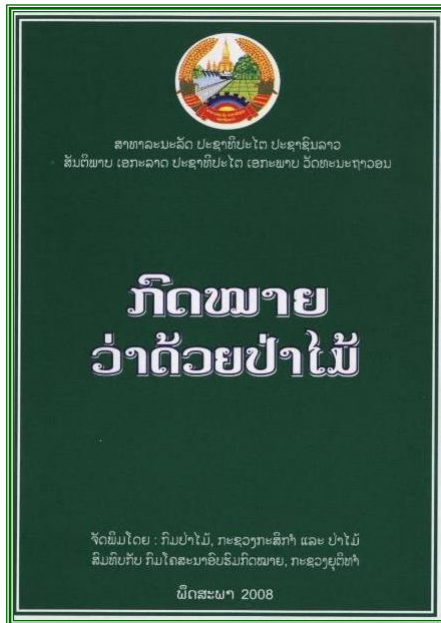
Sources of timber:

- Production forest.
- Plantations – Investment and household/smallholder
- Forest conversion areas
- Village Forest/trees owned by individuals

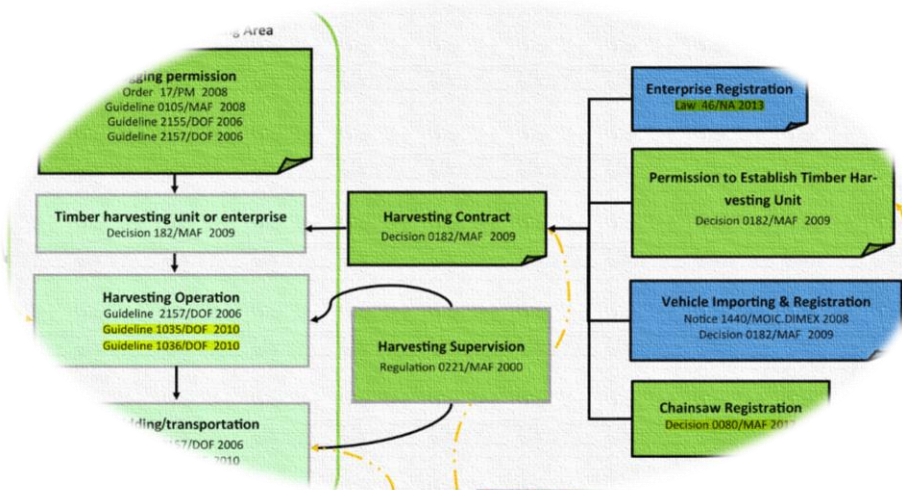
Hierarchy of legal instruments



Forestry Law 06/NA (2007)



Flow Charts along the Supply Chain



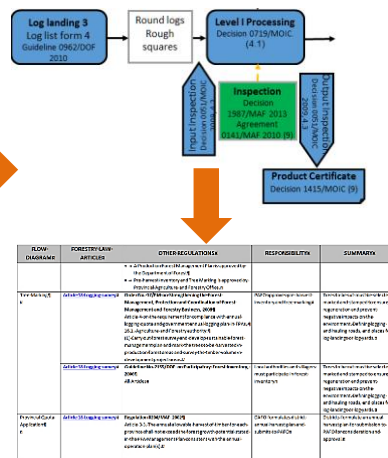
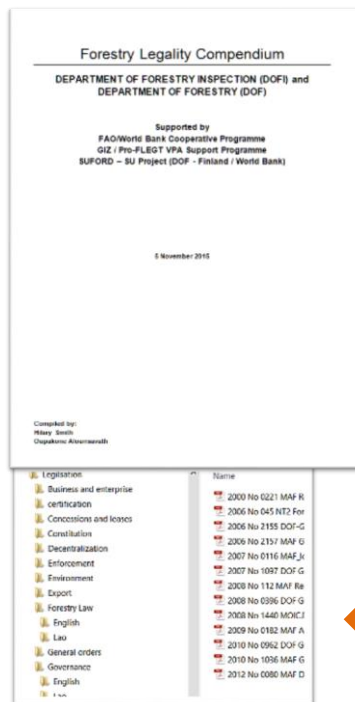
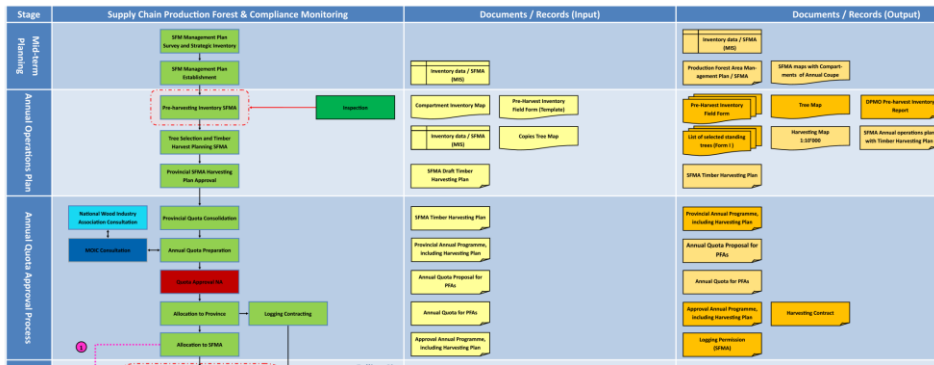
Tabulated Compendium

FLOW DIAGRAM REFERENCE	FORESTRY LAW ARTICLE	OTHER REGULATIONS	RESPONSIBILITY	SUMMARY
		landing 1 to log landing 2 landing by passing through a public road, the regulations of the Ministry of Communication, Transport, Post and Construction should be strictly respected.		
Form II Log Transport Slip	Article 53. Transport of timber and forest products	Guideline No0962/MAF Concerning the management of timber log transport from cutting area to Log Landing 2, 2010 4.3. The transport of timber to Log yard II 4.4. The listing of timber transported to Log yard II Form II Log transport slip from Log Landing 1 to Log landing 2	Not specified	A log transport slip is required for the movement of logs from Log Landing 1 to Log Landing 2
Form III Delivery Docket	Article 53. Transport of timber and forest products	Guideline No0962/MAF Concerning the management of timber log transport from cutting area to Log Landing 2, 2010 4.3. The transport of timber to Log yard II 4.4. The listing of timber transported to Log yard II Form III Log delivery docket (daily record) into Log Landing II	Not specified	A log transport Permit is required for the movement of logs from Log Landing 1 to Log Landing 2
LOG LANDING 2				
Form II Log Transport Slip from Log Landing I	Article 21. Measuring and quality grading	Guideline No0962/MAF Concerning the management of timber log transport from cutting area to Log Landing 2, 2010 Form II	Not specified	Logs arriving at Log Landing II must be accompanied by a Log Transport Slip from Log Landing I
Form III Delivery Docket	Article 21. Measuring and quality grading	Guideline No0962/MAF Concerning the management of timber log transport from cutting area to Log Landing 2, 2010 Form III	Not specified	Logs arriving at Log Landing II must be accompanied by a Daily Record



www.flegtlaos.com

Supply Chain Control

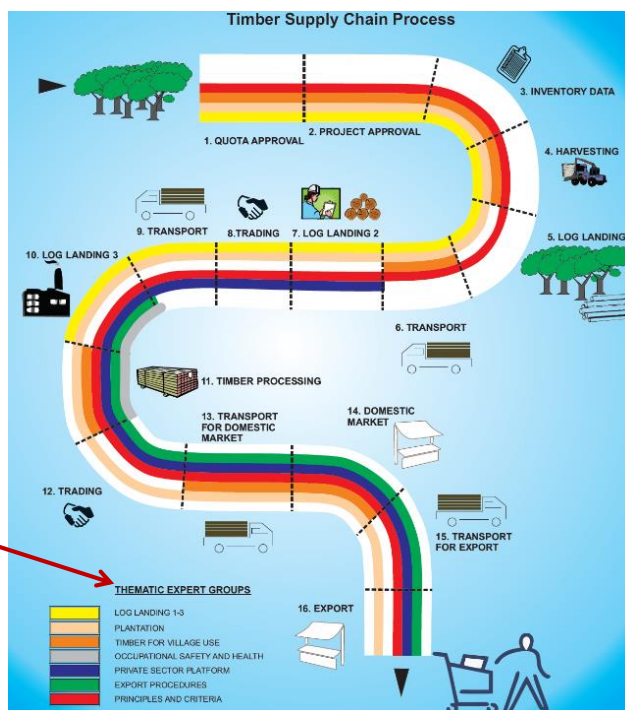


Next Steps:

- Launching of the digital version with hyperlinks to online database.
- Use as training material for capacity building in forestry law & related regulations.
- Ensure regular update by including new law & regulations.
- Application as a reference tool in FLEGT Thematic Expert Groups as a baseline for the development of timber legality definition (TLD).
- Flowcharts are also used for development of other TLAS elements as “Supply chain control” and “ Verification”.

Summary:

- A comprehensive resource on legal information about forest and timber.
- Identifying gaps, conflicts and areas that may need to be addressed - need to identify priorities.
- Reference Tool for thematic expert groups to develop Timber Legality Definition (TLD) in a multi-stakeholder process.



Thank You