



Land Management in Lao

2012 ASIA LNAND FORUM

**Democratizing Governance on Land towards Enhanced
Access of the Poor to Land and Common Property
Resources**

02 – 03 OCT. 2012, Phnom Penh, Cambodia

Prepared by: Dr. Palikone Thalongsechanh (PhD in Geography)

Land and Natural Resources Information Center

MoNRE, Laos, e-mail: palikone.t@gmail.com;



ຈາກສະພາບຈຸດພິເສດຂອງ ສປປລາວ



The GOL set the strategy by the end 2020 ! !

- 1> Poverty reduction especially in the rural and remote areas
- 2> Land Use Planning and Zonning (+Land Titling)
- 3> Saving the conservation 70 % and in use 30%



Recently Lao government opens the door to foreign investment in which mostly related to land use for tree plantation (rubber plantation), mining, hydropower etc. or known as state land concession. The state land concession is a part of turning the land into capital policy of government



Big Boom investment since 1991 !!



Big mistake and wrong



Big Challenge on the Ecosystem

Year by year we lose the
The Natural FC for industrial
plantation !





ຢ່າງພາລາຂອງ ກຸ່ມບໍລິສັດ ຮວ່າງແອງ ຢາລາຍ
CAO SU TẬP ĐOÀN HOÀNG ANH GIA LAI



www.hagl.com.vn

LOGGING PARALLEL WITH INDUSTRIAL PLANTATION



Ecological impact



Large Scale

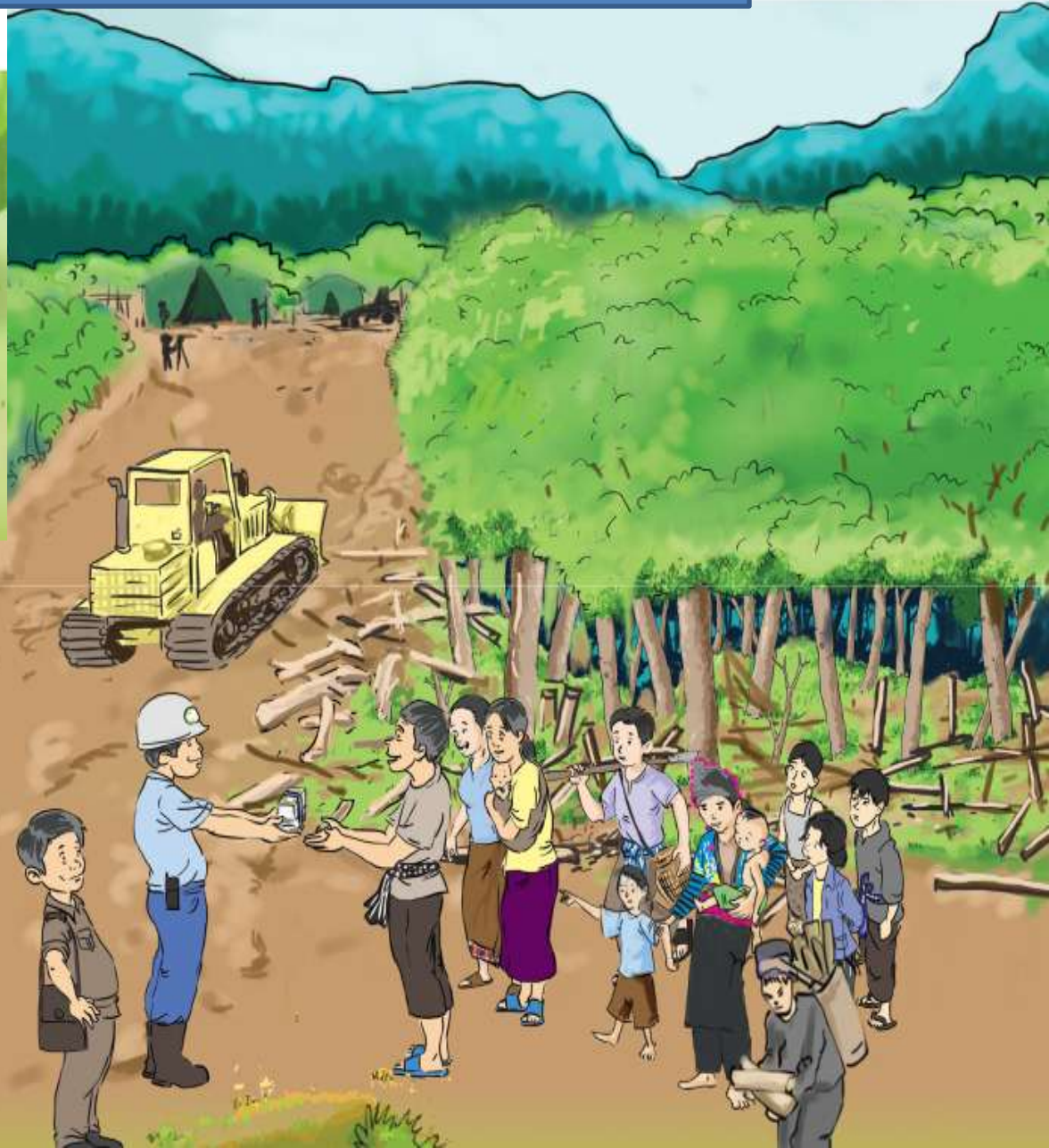


Effect to the Poor villages in the Rural and Remote Areas



Peoples loose the Land right ! ! !

ການແກ້ໄຂຂໍ້ຂັດແຍ່ງກ່ຽວກັບທີ່ດິນ



Problem on food access



Social-Economic Impact !



Liver hood will be big chanllenge !



Effects to the next
generation ! ! ! !



I am moving and going to live in the modern City !
See all of you there !!!

Ha !!



General Recommendations !

>>Securing Land Rights in rural areas as a basis for increased economic productivity and land tenure security

- 
- Needs to do the Land registration soon
 - Land use planning / land zoning for the peoples who loose the land right
 - Consideration of different land usage interests and local/traditional systems
 - Rule of Law: mechanism for sanctions must be imposed for violations
 - Functional institutions, transparency at all levels, policy maker
 - International experience sharing !!!!!!!!

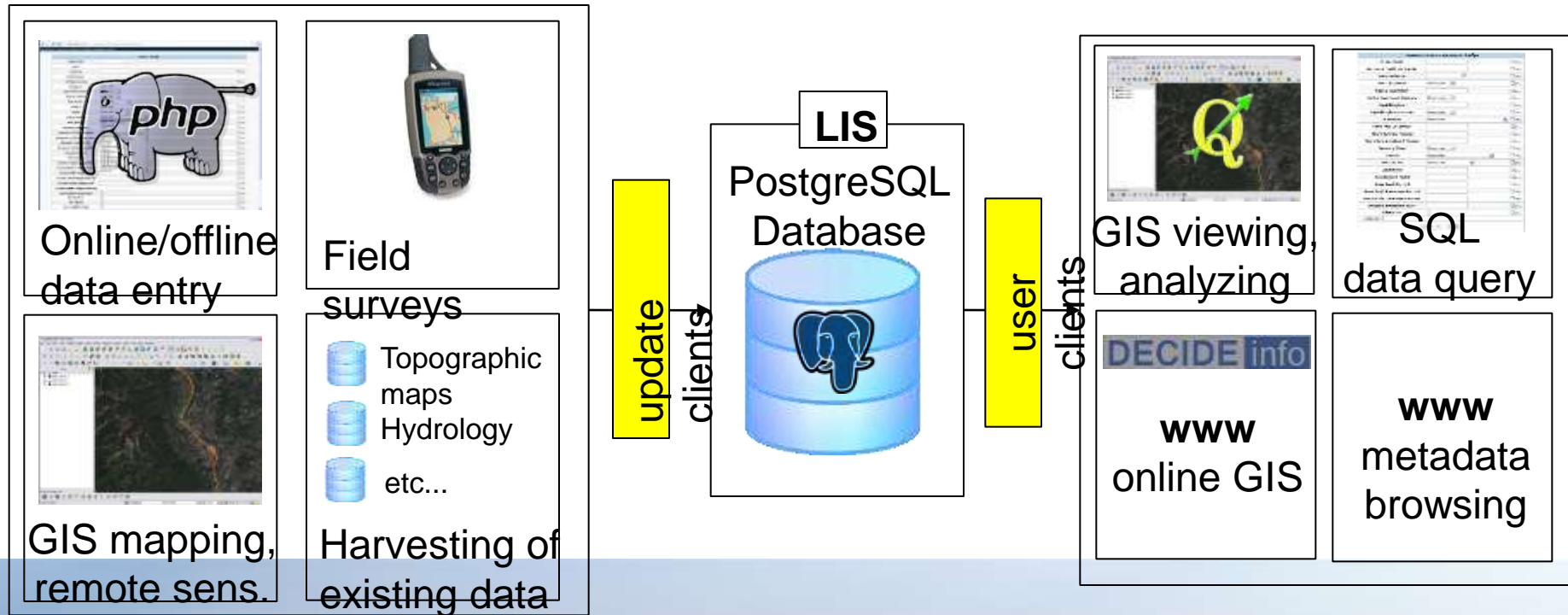
Existing Land Information System (LIS)

- what kind technology we are using for

Data source examples

Database Management System

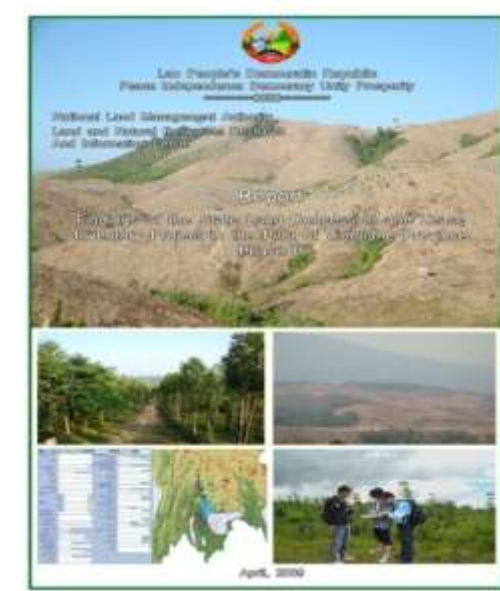
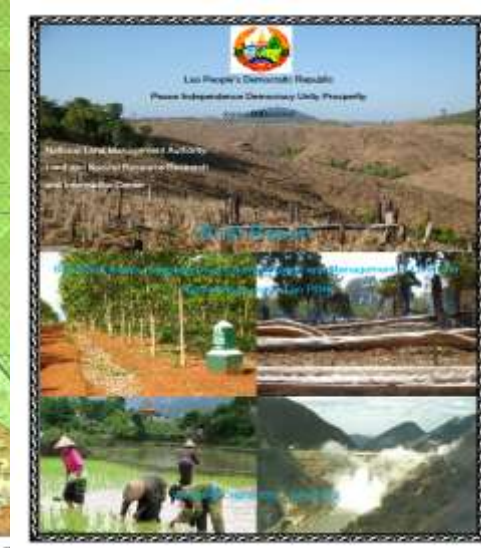
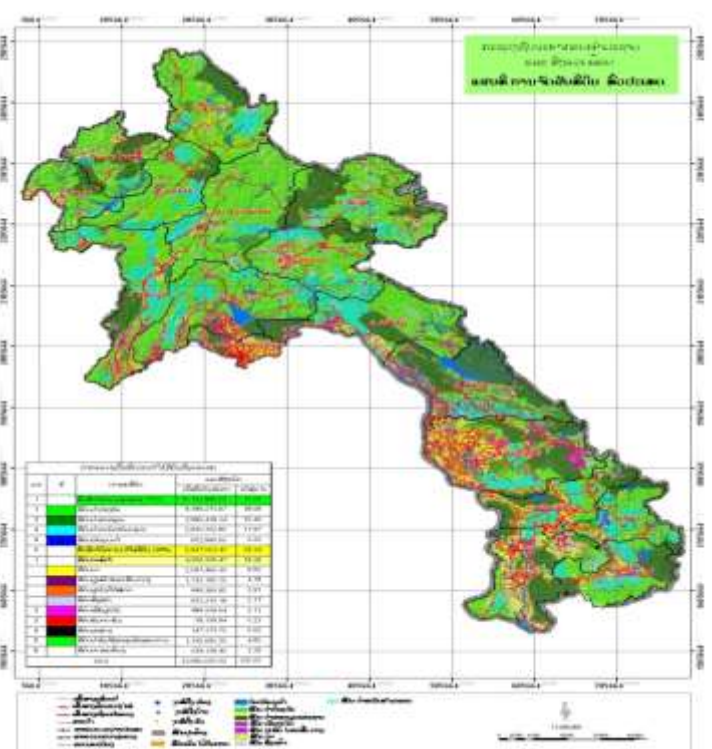
Data usage examples



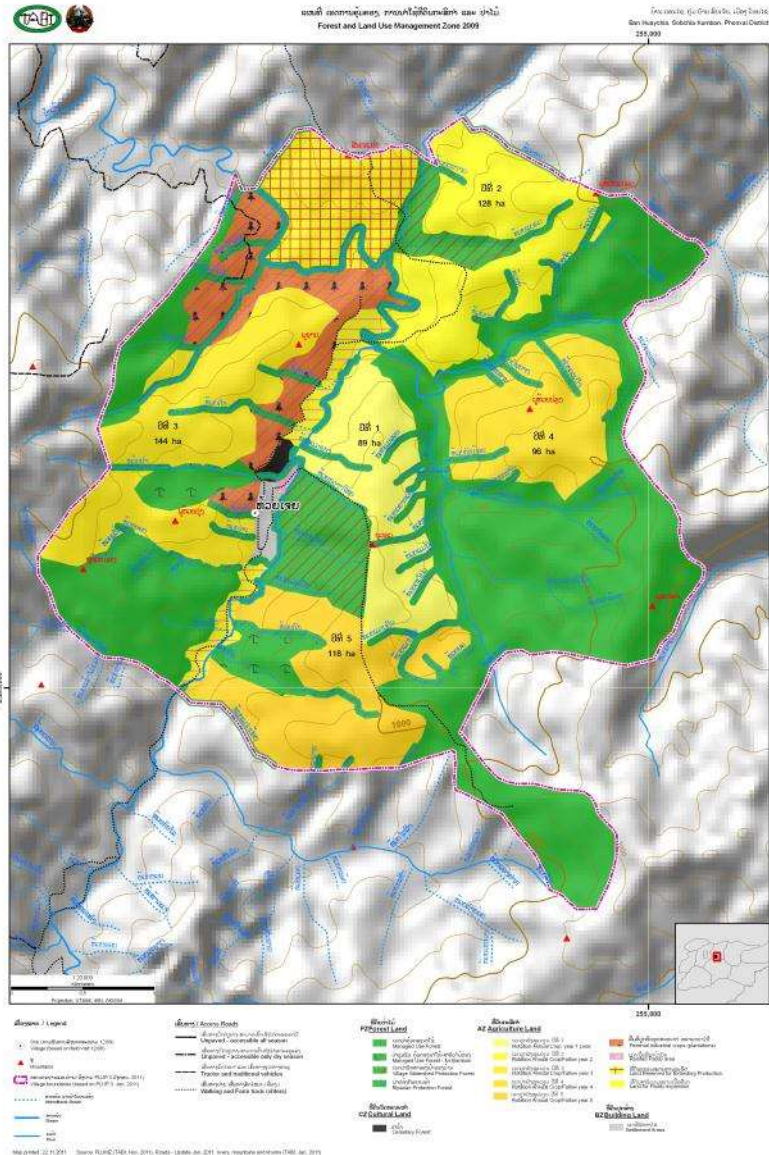
Concessions and Lease Base Mapping in Lao

Base information

ແຜນທີ່ສຳປະທານຂອງບໍລິສັດ ອຸດສາຫະກຳໄມ້ ໂອຈິ ຈຳກັດຢູ່ ເມືອງ ຫີນບູນ



Village level land use planning

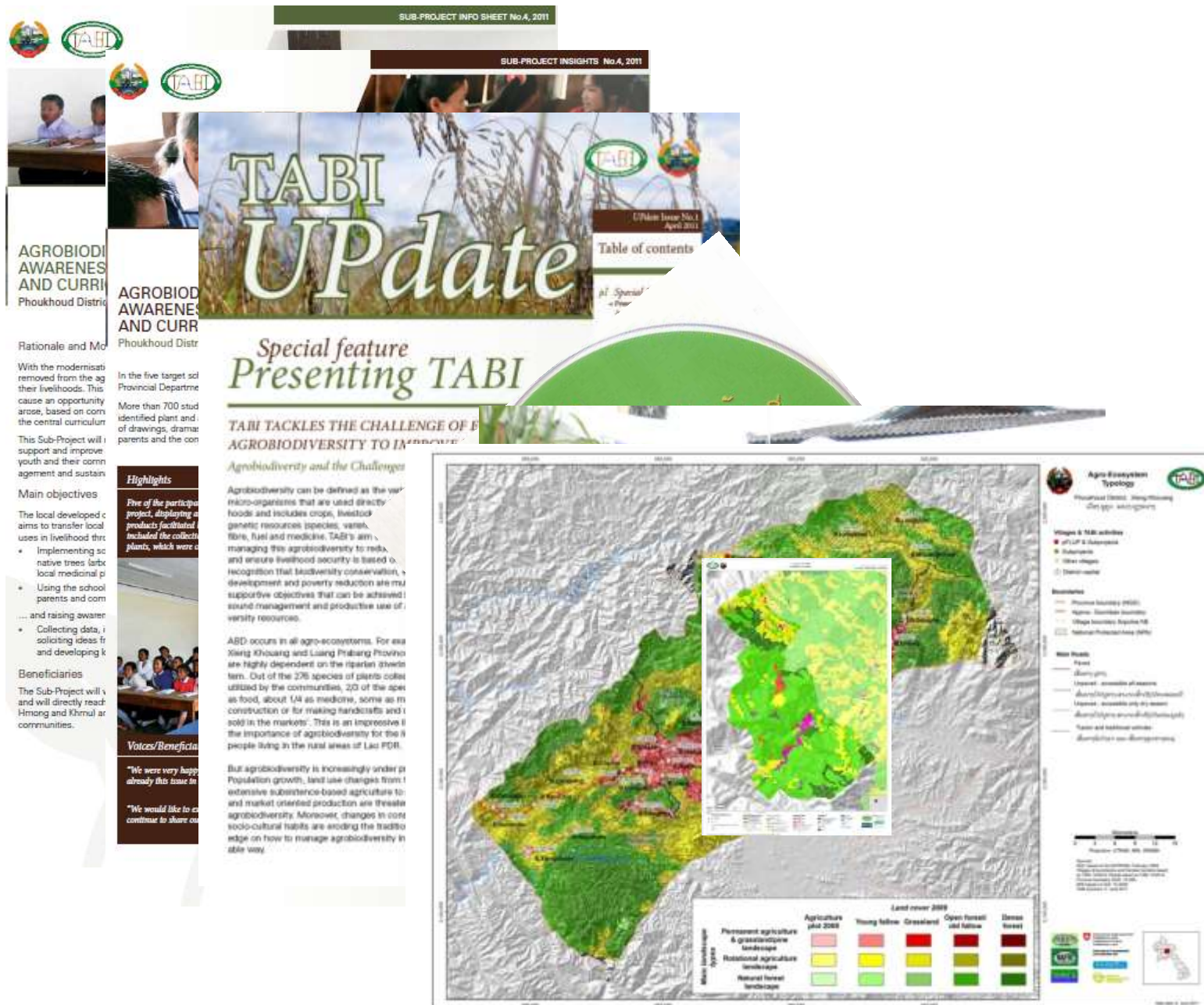


Information Platforms: baselines, contextualization sharing and learning Or monitoring



Future !!

Development communication





“ $\text{¢}^{\circ}\text{®}\text{Ã}$

¥”

Thank!

Do hope Rubber will be replace the
natural forest cover in Lao soon !

