

**Transol Corporation Limited**  
**ACN 089 224 402**

**CAMBODIA - NEW PROJECT 100% GRANTED – ANDONG BOR**

Liberty Mining International Pty Ltd (Liberty), a 100% subsidiary of Transol, has been granted an Exploration License at Andong Bor in the Banteay Meanchey and Oddar Meanchey Provinces in the North West of Cambodia. The project adds excellent potential and complements its existing portfolio of Cambodian properties.



**Project Location Map**

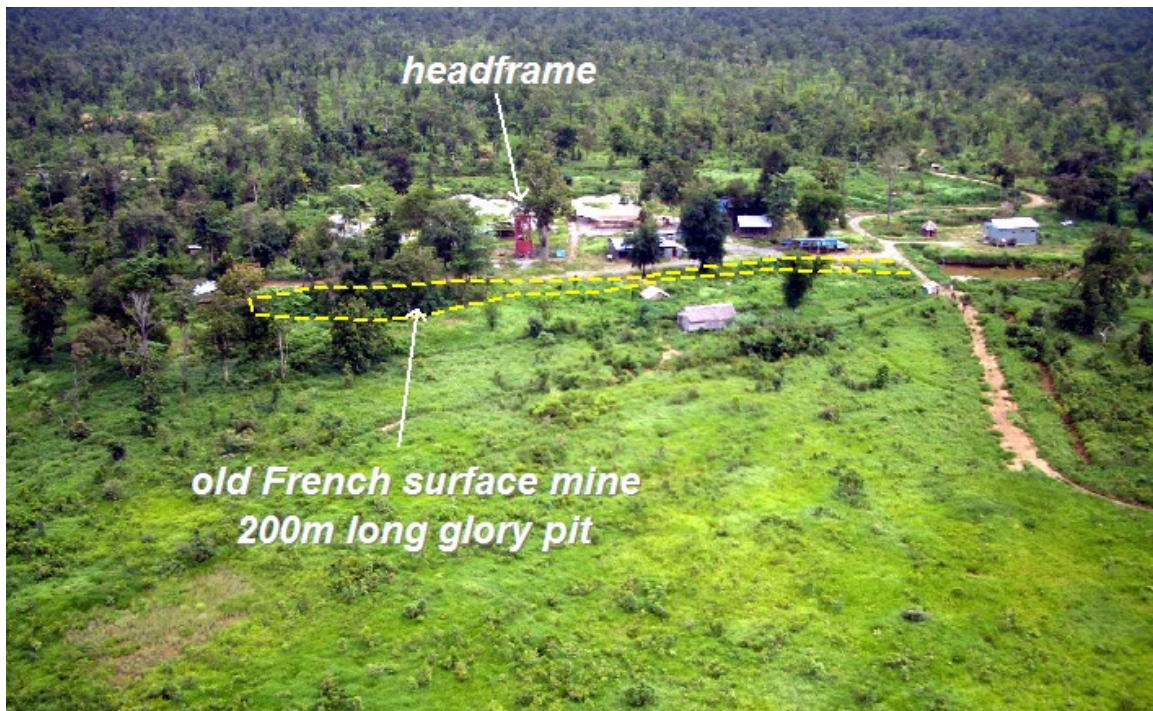
The licence covers 363.5 sq km and encompasses recent and historic mining activity dating back to French mining in the 1880's, French exploration in the 1960's and more recently mining activity carried out by a Korean Company.

**Transol Corporation Limited**  
**ACN 089 224 402**



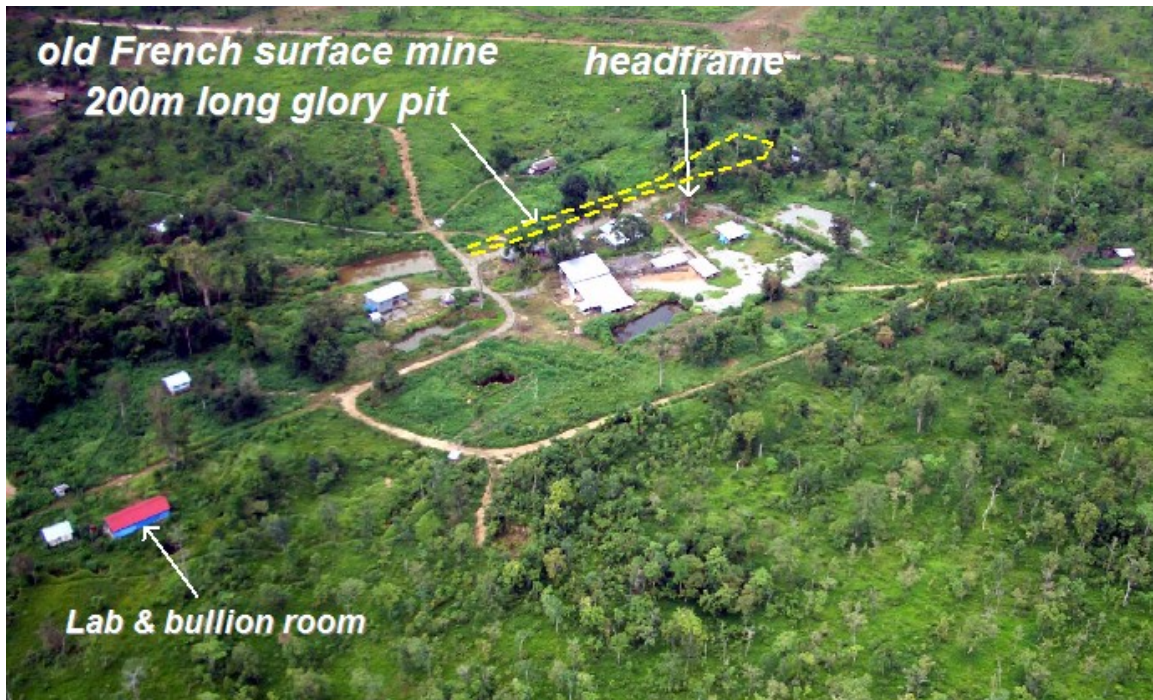
**The Andong Bor Mine headframe**

The mine was recently developed by a Korean Company. A shaft was sunk to a depth of 70 metres and drives were developed totaling 200 metres along the lode off a 30 metres long cross-cut.



**Transol Corporation Limited**  
**ACN 089 224 402**

**Aerial view of the mine site looking northward**

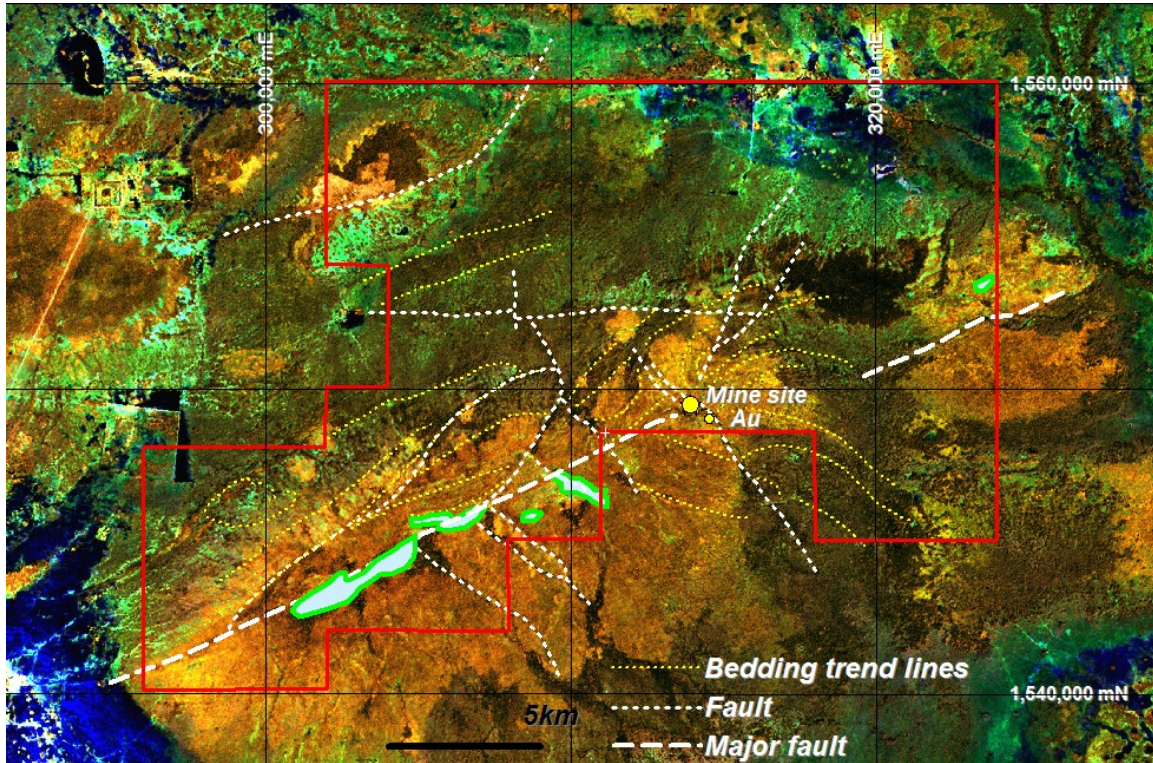


**Aerial view of the mine site looking southward showing the headframe and infrastructure (offices, crusher and CIP plant)**

The project is located in the Loei – Petchabun Volcanic Belt (LPVB) which is a package of Permian volcanic and intrusive rocks tracing the edge of ancient colliding plate margins. The belt is well endowed with gold and base metal mineralization and hosts the 1.7 million ounce (Moz) Chatree Gold mine operated by Kingsgate Consolidated Limited in Thailand (with a total Resource of 4.8 Moz Gold). The LPVB is an arcuate belt in a north-south orientation through the center of Thailand that can be traced for a further 500km and into north-west of Cambodia.

Published geology maps give minimal information so Liberty geologists are currently conducting Landsat and photogeological mapping. The Chatree Gold mine locates at the intersection of a major west- northwesterly fault and a strong cross fault. The strata appear to be disrupted by this cross fault and there are a number of similar locations along the major fault.

**Transol Corporation Limited**  
**ACN 089 224 402**



**Preliminary Landsat Interpretation**

A program of extensive field work has commenced. The field work will include airborne geophysics, mapping, sampling and drilling. The mine area is concealed by a thin layer of calcrete and there is no outcrop. This type of setting can be explored effectively using modern techniques of low level assaying and surface geophysical methods; methods unavailable to early explorers.

This project boasts early stage drill targets and a history of gold mining activity which suggests significant mineralization is already identified. Liberty believes the project adds excellent potential and complements its portfolio of Cambodian properties.

Richard Stanger  
Managing Director, Liberty Mining International Pty Ltd  
For and on behalf of Transol Corporation Limited

**Transol Corporation Limited**  
**ACN 089 224 402**

---

*Competent Persons Statement: The information contained in the report that relates to Exploration Results, Mineral Resources or Ore Reserves of the projects owned by Transol Corporation Limited is based on information reviewed by Mr. Don Horn, who the Company has contracted as a consultant. Mr. Don Horn is a Member of the Australasian Institute of Mining and Metallurgy and has sufficient experience which is relevant to the style of mineralization and type of deposit under consideration and to the activity which he is undertaking to qualify as a Competent Person as defined in the 2004 Edition of the 'Australasian Code for Reporting of Exploration Results, Mineral Resources and Ore Reserves'. Mr. Don Horn has given consent to the inclusion in the report of the matters based on his information in the form and context in which it appears.*

---