

► Operator List :

Code	Operator Name	Address	License
2	Siem Reap Water Supply Authority (SRWSA)	National Road No 6, Slor Kram Village, Sangkat Slor Kram, Siem Reap City	-
3	Preah Sihanouk Water Supply	St. Santepheap, Modul 1, Sangkat 3, Phreah Sihanouk City	-
4	Kampot Water Supply	Tvi Khang Cheung Village, Sangkat Andong Khmer, Kampot City	-
5	Pursat Water Supply	Po Ta Kuoy Village, Lo Lok Sar Commune, Pursat City	-
6	Battambang Water Supply	Phum Kamkor, Sangkat Svay Por, Battambang District	-
7	Kampong Thom Water Supply	Phum Ti Muoy, Sangkat Kampong Thom, Stung Sen City	-
9	Svay Rieng Water Supply	Phum Lor, Sangkat Po Ta Hor, Svay Rieng City	-
10	Stung Treng Water Supply	Phum Preak, Stung Treng Commune, Stung Treng District	-
11	Stong Water Supply (in K. Thom)	Phum Cher Tiel, Kampong Chen Tbong Commune, Stong District	-
12	Tang Krasang Water Supply (in K. Thom)	Phum Thomneath, Tang Krasang Commune, Santouk District	-
UL_001	យុនអភិវឌ្ឍន៍	Phnom Toch Phnom Thom	គំរោងធនាគារពិភពលោក
UL_002	យុនអភិវឌ្ឍន៍	Psar Chub	គំរោងធនាគារពិភពលោក
UL_003	ក្រុមហ៊ុនភូមិនិមិត	Beng Trakuon	គំរោងធនាគារពិភពលោក
UL_004	ក្រុមហ៊ុនភូមិនិមិត	Thmor Puok	គំរោងធនាគារពិភពលោក
UL_005	ក្រុមហ៊ុនតាយណាខនស្រ្តាក់សិនអេជីនេ	Phnom Srok	-
UL_006	ក្រុមហ៊ុនតាយណាខនស្រ្តាក់សិនអេជីនេ	Poy Cha	-
LC_003	Chhom Dalis	Pluv Lum, Cham Bork Meas Village, Bak Kheng district, Khan Chroy Changvar, PP	១១៨ MIH / 2016 (ប្រកាសអនុញ្ញាតជំនួស)
LC_011	Heang Dara	Prek Taten Village, Svay Broteal Commune, S'ang District, Kandal Province.	៣៣០ MIH / 2015 (ប្រកាសពន្យារស្តីពីលក្ខណៈពិសេសក្រោយ)
LC_019	Mrs.Kry Kaovney	Praek Tameak Village,Praek Tameak Commune, Khsach Kandal District, Kandal Province.	១៤៧ MIH / 2016 (ប្រកាសពន្យារស្តីពីលក្ខណៈពិសេសក្រោយ)
LC_008	Leng Khiev	Preak Talai Village, Praek Ambel, S'ang District, Kandal Province.	២២៣ MIH / 2015 (ប្រកាសពន្យារស្តីពីលក្ខណៈពិសេសក្រោយ)
LC_013	Mr. Srun Bunpor	Preak Samrong Village, Koh Thom "Kh" Commune, Koh Thum District, Kandal Province.	២២៦ MIH / 2015 (ប្រកាសពន្យារស្តីពីលក្ខណៈពិសេសក្រោយ)
LC_018	Mr.Nob Sinat	Preak Bangkong Village, Praek Takov Commune, Khsach Kandal District, Kandal Province.	៣០៩ MIH / 2015 (ប្រកាសពន្យារស្តីពីលក្ខណៈពិសេសក្រោយ)
LC_015	Mr. Chea Kheng	Chrung Romeas Village, Kampong Kong Commune, Koh Thum District, Kandal Province.	៣៥៧ MIH / 2015 (ប្រកាសពន្យារស្តីពីលក្ខណៈពិសេសក្រោយ)
LC_048	Mrs. Sek Kong	Talak Village, Ksem Ksan Commune, Oudong District, Kampong Speu Province.	១៤៣ MIH / 2016 (ប្រកាសពន្យារស្តីពីលក្ខណៈពិសេសក្រោយ)
LC_012	Golden Bull Co., Ltd.	Lek 3 village, Svay Rolom Commune, S'ang District, Kandal Province.	១០៤ MIH / 2016 (ប្រកាសពន្យារស្តីពីលក្ខណៈពិសេសក្រោយ)
LC_030	Phae Dalin	Mouy Village, Sangkat Roka Knong, Daun Keo City, Takeo Province.	៨៦៩ MIME / SM 2013
LC_028	Tun Leakhena		៣២៩ ខវច. ១ស្ន. ប្រក (ប្រកាសសល់ពីអតីតMIME)
LC_026	Ngov Chhorvorn	Ariyaksatr Village, Ariyaksatr Commune, Lvea Aem District, Kandal Province.	០៧៨ MIH / 2016 (ប្រកាសអនុញ្ញាតជំនួស)
LC_033	Nun Reaksmeay	Phsa Village, Phnom Den Commune, Kirivong District, Takeo Province	៣៤១ MIH / 2015 (ប្រកាសពន្យារស្តីពីលក្ខណៈពិសេសក្រោយ)
LC_037	Mrs. Uy Sokha	Prey Chhoeu Teal Village, Ang Ta Som Commune, Tram Kok District, Takéo Province.	១៩៤ MIH / 2015 (ប្រកាសពន្យារស្តីពីលក្ខណៈពិសេសក្រោយ)
LC_035	Mr. Srey Sokhom	Smoa Khjei Village, Trapeang Sab Commune, Bati District, Takéo Province	២២០ MIH / 2015 (ប្រកាសពន្យារស្តីពីលក្ខណៈពិសេសក្រោយ)
LC_024	Mr. Seang Sengheab	Prambei Mum Village, Krang Mkak Commune, Angk Snuol District, Kandal Province.	២២៥ MIH / 2015 (ប្រកាសពន្យារស្តីពីលក្ខណៈពិសេសក្រោយ)
LC_025	Mr. Chea Sron	Svay Village, Prey Pouch Commune, Angk Snuol District, Kandal Province.	២០៨ MIH / 2015 (ប្រកាសពន្យារស្តីពីលក្ខណៈពិសេសក្រោយ)
LC_086	Mr. Eng Chayhout	Chea Muntrey Village, Treng Commune, Rattanakmondul District, Battambang Province.	២៤៤ MIH / 2015 (ប្រកាសពន្យារស្តីពីលក្ខណៈពិសេសក្រោយ)
LC_050	Mr. Soung Sarath	Ang Metrey Village, Roleang Kroeul Commune, Samrong Torng District, Kampong Speu.	២១៦ MIH / 2015 (ប្រកាសពន្យារស្តីពីលក្ខណៈពិសេសក្រោយ)
LC_057	Ann Ko Water Supply Co.Ltd	Koun Damrei Village, Sangkat Nimit, Krong Poay Paet, Banteaymeanchey Province.	៨៣៣ ខវច. ១ស្ន. ប្រក

Code	Operator Name	Address	License
LC_065	Vong Reakmey	Touk Meas Village, Touk Meas Khang Lech Commune, Banteay Meas District, Kompot Province	៤៦៩ ឧប.ទស.ប្រក
LC_039	Chhun Sarin	Svay Pear Village, Angkagn Commune, Prey Kabas District, Takéo Province	០៧១ MIH / 2016 (ប្រកាសអនុញ្ញាតជំនួស)
LC_068	Mr. Try Yousith	Poth Village, Phnom Kong Commune, Angkor Chey District, Kompot Province	២២៤ MIH / 2015 (ប្រកាសពន្យារសុពលភាពពន្លាចុងក្រោយ)
LC_061	Mr. Chun Vanthorn	Tro Paing Ropov Village, Praek Tnoat Commune, Teouk Chhou District, Kampot Province	២០២ MIH / 2015 (ប្រកាសពន្យារសុពលភាពពន្លាចុងក្រោយ)
LC_093	Mrs. Em Sophy	Toul Tbung Village, Chhoeu Tom Commune, Kro kor District, Porsat Province.	៣២៣ MIH / 2015 (ប្រកាសពន្យារសុពលភាពពន្លាចុងក្រោយ)
LC_041	Mr. Lim Sreng	Krang Leav Village, Roveang Commune, Samrong District, Tekeo Province.	១២៧ MIH / 2016(ប្រកាសពន្យារសុពលភាពពន្លាចុងក្រោយ)
LC_122	LYP Group		
LC_115	Sang Seab	Chroy Thmor Krom Village, Chlong Commune, Chlong District, Kratie Province.	៩៦៨ ឧប.ទស.ប្រក
LC_118	Seang Kimsreng	Tamao Krom Village, Tamao Commune, Preak Prosorb District, Kratie Province.	៣១៣ ឧប.ទស.ប្រក
LC_067	Neang KiKemEng	Traim Sorsor Village, Somromg Leu Commune, Banteay Meas District, Kompot Province	៦៦៧ ឧប.ទស.ប្រក
LC_069	Sok Nay	Thom Thmei Village, Dornng Tong District Commune, Dornng Tong District, Kompot Province	១០៩៤ ឧប.ទស.ប្រក
LC_070	Chev Sony	Kompong Kes Village, Trapeang Sangke Commune, Teouk Chhou District, Kampot Province	០១២ MIH / ២០១៧ (ប្រកាសពន្យារសុពលភាពពន្លាចុងក្រោយ)
LC_079	Boeung Loum	Banan Village, Kantueu Pir Commune, Banan District, Battambang Province.	១៥២ MIH / 2016 (ពន្យារសុពលភាពពន្លាចុងក្រោយ)
LC_113	Mrs. Chhuon Florina	Tropang Pring Village, Sangkat Kratie, Kratie City, Kratie Province.	០៦៧ MIH / 2016 (ប្រកាសអនុញ្ញាតជំនួស)
LC_071	Mr. Ey Mao	Tumnob Tuek Village, Bavel Commune, Bavel District, Battambang Province.	២៣៨ MIH / 2015 (ប្រកាសពន្យារសុពលភាពពន្លាចុងក្រោយ)
LC_076	Mr. Tak Chan Kouy	Bay Damram Village, Chheu Teal Commune, Banan District, Battambang Province.	២៣៧ MIH / 2015 (ប្រកាសពន្យារសុពលភាពពន្លាចុងក្រោយ)
LC_073	Mr. Dout Touch	Phnum Sampov Lech Village, Phnom Sampov Commune, Banan District, Battambang Province.	២៣៤ MIH / 2015 (ប្រកាសពន្យារសុពលភាពពន្លាចុងក្រោយ)
LC_105	Mr. Ly Vongdy	Srae Spey Village, Kong Chey Commune, Ou Reang Ov District, Tbong Khmum Province.	២៤៦ MIH / 2015 (ប្រកាសពន្យារសុពលភាពពន្លាចុងក្រោយ)
1	Phnom Penh Water Supply Authority (PPWSA)	Office 45 st.106, Sangkat Srah Chork, Khan Daun Penh, Phnom Penh	
LC_100	Ly Heng	Boeung Deng Village, Prek kork Commune, Stoeung Trong District, Kampong Cham Province	២៩០ ឧប.ទស.ប្រក
LC_099	Touch Sophoan	Bosknol Village, Bosknol Commune, Chamkarloeu District, Kampong Cham Province	១០៤០ ឧប.ទស.ប្រក
LC_104	Lan Chheav	Takory Village, Prek Damboke Commune, Srey Sonthor District.	២៩៧ ឧប.ទស.ប្រក
LC_103	Khun Sophal	Chealea Village, Chealea Commune, Batheay District, Kampongcham Province.	៣១៤ ឧប.ទស.ប្រក
LC_089	Anco Water Supply	Kbal Chhay Zone, Krong Preah Sihanouk, Sihanouk Vill.	១០១ MIH / ២០១៧ ប្រកាសអនុញ្ញាតជំនួស
LC_116	Un Channary	Preak Samann Village, Preak Samann Commune, Chlong District, Kratie Province.	៩៩១ ឧប.ទស.ប្រក
LC_129	Mr.Amnot Viriya	Thlav Village, Svay Antor Commune, Svay Antor District, Prey Veng Province.	២៤៩ MIH / 2015(ប្រកាសពន្យារសុពលភាពពន្លាចុងក្រោយ)
LC_133	Mr. Chea Sarith	Krosang Tomg Village, Angkor Reach Commune, Preah Sdach District, Prey Veng Province.	៣៤៤ MIH / 2015 (ប្រកាសពន្យារសុពលភាពពន្លាចុងក្រោយ)
LC_036	Mr. Khorl Vibol	Tram Khnar Village, Sophy Commune, Bati District, Takéo Province	៣៤៣ MIH / 2015 (ប្រកាសពន្យារសុពលភាពពន្លាចុងក្រោយ)
LC_020	Mrs. Ngin Vanna	Peam Village, Rokakoang Ti Mouy Commune, Mukh Kamphool District, Kandal Province.	១១៩ MIH / 2016 (ប្រកាសពន្យារសុពលភាពពន្លាចុងក្រោយ)
LC_112	Touch Saren	Rokar Kandal 1 Sangkat Rokar Kandal, Kratie City, Kratie Province.	៩៩០ ឧប.ទស.ប្រក
LC_114	Kav San	Kbal Snoul Village, Snoul Commune, Snoul District, Kratie Province.	៥៩៣ ឧប.ទស.ប្រក
LC_119	Tang Hokkhy	Chroy Thmor Village, Chambork Commune, Preak Prosorb District, Katie Province.	១៥០ ឧប.ទស.ប្រក
LC_117	Som Champey	Preak Prosorb Krom Village, Preak Prosorb Commune, Preak Prosorb District, Kratie Province.	៣២២ ឧប.ទស.ប្រក

Code	Operator Name	Address	License
LC_096	Sovannara Pheanich Co.Ltd	Damnak Village, Sangkat Kampong Pronark, Preah Vihear City, Preah Vihear Province.	៥០០ ឧរថ. ១ស.ប្រក
LC_094	Vong Sambo	Pramaoy Village, Pramaoy Commune, Veal Veng District, Prey Veng Province.	៥៥៩ ឧរថ. ១ស.ប្រក
LC_135	Tai Seng Phalit Teuksaat Co., Ltd.	Chey Chumneah Village, Sangkat Labanseak, Banlung City, Rattanakiry Province.	៧៦២ ឧរថ. ១ស.ប្រក
LC_132	Mr.Long Rin	Kantrean Village, Rong Damrey Commune, Baphnom District, Prey Veng Province.	២០១ MIH / 2015 (ប្រកាស ពន្យារស្តុលភាពពន្លឺចុង ក្រោយ)
LC_095	Mr. Thlang Sarath	Morl Village, Rokart Commune, Phnom Krovagn District, Pursat Province.	៣២៥ MIH / 2015 (ប្រកាស ពន្យារស្តុលភាពពន្លឺចុង ក្រោយ)
LC_109	Mrs. Hoy Leakhena	Khsach Village, Kampong Tkov Commune, Krolagn District, Seam Reap Province.	៣១៧ MIH / 2015 (ប្រកាស ពន្យារស្តុលភាពពន្លឺចុង ក្រោយ)
LC_090	Sok Ngoun	Koh Khyomg Village, Ou Chrov Commune, Prey Noub District, Preah Sihanuk Ville.	៩៨៨ ឧរថ. ១ស.ប្រក
LC_056	Tov Nearyphall	Kouk Svay Village, Ruessei Kraok Commune, Mongkol Borei District, Banteaymeanchey Province.	៧៦៨ ឧរថ. ១ស.ប្រក
LC_083	Toeum Sarert	Samaky Village, Pech Chenda Commune, Phnom Prek District, Battambang Province.	៣៣១ ឧរថ. ១ស.ប្រក
LC_082	Chea Sokhorn	Kilou Lekh Dabbei Village, Santepheap Commune, Sampov Loun District, Battambang Province.	៧៥៦ ឧរថ. ១ស.ប្រក
LC_072	Mrs. Rong Keang	Kear Village, Kear Commune, Moung Ruessei District, Battambang Province.	៣១២ MIH / 2015 (ប្រកាស ពន្យារស្តុលភាពពន្លឺចុង ក្រោយ)
LC_108	Mr. Poav Dort	Kampong Kdei Muoy Village, Kampong Kdei Commune, Chi Kreng District, Siem Reap Province.	១៩៩ MIH / 2015 (ប្រកាស ពន្យារស្តុលភាពពន្លឺចុង ក្រោយ)
LC_088	Mr.Touch Sithy	Ou Tracheak Chet Village, Samrong Commune, Prey Noub District, Preah Sihanuk Ville.	១៨១ MIH / 2015 (ប្រកាស ពន្យារស្តុលភាពពន្លឺចុង ក្រោយ)
LC_085	Mrs. Heak DaraSamphors	Chhay Ballangk Village, Thipakdei Commune, Koas Krala District, Battambang Province.	៣០២ MIH / 2015 (ប្រកាស ពន្យារស្តុលភាពពន្លឺចុង ក្រោយ)
LC_084	Mr. Men Ngouk	Phnom Toch Village, Pech Chenda Commune, Phnom Prek District, Battambang Province.	៣០០ MIH / 2015 (ប្រកាស ពន្យារស្តុលភាពពន្លឺចុង ក្រោយ)
LC_078	Mrs. Chea Chhunlim	Ta Ngaen Village, Ta Kream Commune, Banan District, Battambang Province.	២៣៣ MIH / 2015 (ប្រកាស ពន្យារស្តុលភាពពន្លឺចុង ក្រោយ)
LC_081	Frong Nasy Co. Ltd	Doung Village, Boeng Reang Commune, Kamrieng District, Battambang Province.	១៤៦ MIH / 2016 (ប្រកាស ពន្យារស្តុលភាពពន្លឺចុង ក្រោយ)
LC_107	Chea Sambou	Khsach Prachheh Kandal Village, Krouch Chhmar Commune, Krouch Chhmar District, Tboung Khmum Province.	១០១១ MIMÉ / 2013
LC_060	Ouknha Lim Heng	Chob Kokir Khang Lech Village, Ampil Commune, Banteay Ampil District, Oddor Meanchey Province.	៨៦០ ឧរថ. ១ស.ប្រក
LC_031	Mak Thun	Brolay Meas Village, Romegn Commune, Koh Andet District, Takeo Province	១២០៧ ឧរថ. ១ស.ប្រក
LC_032	Mak Thun	Kampong Village, Phreah Bat Chan Chum Commune, Kirivong District, Tekeo Province.	២២០ ឧរថ. ១ស.ប្រក
LC_102	Dy Pisey	Aurun Village, Khpob Ta Ngoun Commune, Stoeung Trong District, Kampongcham Province.	៨៨៩ ឧរថ. ១ស.ប្រក
LC_021	Mrs.Ngin Vanna	Kampung Toul Village, Anlong Romeat Commune, Kandal Stueng District, Kandal Province.	៣១៩ MIH / 2015 (ប្រកាស ពន្យារស្តុលភាពពន្លឺចុង ក្រោយ)
LC_077	Mr. Kho Bunheat	Chheu Teal Village, Chheu Teal Commune, Banan District, Battambang Province.	២៥០ MIH / 2015 (ប្រកាស ពន្យារស្តុលភាពពន្លឺចុង ក្រោយ)
LC_005	Mrs. Chan Nary	Knong Preak Village, Prei Koy Commune, S'ang District, Kandal Province.	១៩៦ MIH / 2015 (ប្រកាស ពន្យារស្តុលភាពពន្លឺចុង ក្រោយ)
LC_127	Mr. Sim Pheakdey	Tuol Ampil Village, Sangkat Chrak Mtes , Krong Bavet, Svay Rieng Province.	១០៥ MIH / 2016 (ប្រកាស ពន្យារស្តុលភាពពន្លឺចុង ក្រោយ)
LC_106	Mr. Tho Sopheak	Preaek Ta Hob Village, Chumnik Commune, Krouch Chhmar District, Tbong Khmum Province.	០១២ MIH / 2016 (ប្រកាស ពន្យារស្តុលភាពពន្លឺចុង ក្រោយ)
LC_101	Dy Pisey	Hanchey Village, Hanchey Commune, Kampong Seam District, Kampong Cham Province.	០៨៣ ឧរថ. ១ស.ប្រក
LC_097	Nob Sida	Kro Saing Chey Village, Baray Commune, Baray district, Kampong Thom Province	697 ឧរថ. ១ស.ប្រក
UL_008	Vorn Bros	Siem Pang Village, Sekong Commune, Siem Pang District, Stoeung Treng Province.	
LC_058	Sear Ben	Veal Hat Village, Malay Commune, Malay District, Banteaymeanchey Province.	៨៨៤ ឧរថ. ១ស.ប្រក
LC_055	Khun Appivath Co.Ltd	Korothan Village, Sangkat O Ambel, Krong Sereysophom, Banteaymeanchey Province.	២០៩ MIH / 2015 (ពន្យារ ស្តុលភាពពន្លឺចុង ក្រោយ)

Code	Operator Name	Address	License
LC_074	Mr. Leang Davich	Kean kes 1 Village, Kouk Khmum Commune, Thmor Kori District, Battambang Province.	៣៣៥ MIH / 2015 (ប្រកាស ពន្យារស្តុលភាពពន្ធដារក្រោយ)
LC_137	Mean Rithy	Trapeang Prasat Village, Trapeang Prasat Commune, Trapeang Prasat District, Oddar Meanchey Province.	០២៦ MIH / 2016 (ប្រកាស អនុញ្ញាតផ្ទាល់)
LC_059	Eng Kang Development Coperation and Construction Co.Ltd	Pul Village, Samrong Sangkat Somrong, Krong Somrong, Oddameanchey Province.	២២៩ MIH / 2015 (ពន្យារ ស្តុលភាពពន្ធដារក្រោយ)
LC_120	Khoo Meng Huot Co.Ltd	Bar Huy Khmer Cheung Village, Sangkat Bar Yakha, Krong Pailin, Pailin Province.	៣៦០ MIH / 2015 (ពន្យារ ស្តុលភាពពន្ធដារក្រោយ)
LC_043	Mr. Cheak Kimly	Krognoung Village, Por Angkrong Commune, Bor Seth District, Kampong Speu Province.	៣១១ MIH / 2015 (ពន្យារ ស្តុលភាពពន្ធដារក្រោយ)
LC_044	Mr. Sous Pouy	Kbea Village, Svayrumpea Commune, Borseth District, Kampongspue Province.	១៩៧ MIH / 2015 (ពន្យារ ស្តុលភាពពន្ធដារក្រោយ)
LC_138	Chheng Sokunthea	Khtum Krang Village, Sangkat Chbarmon , Krong Chbarmon, Kampong Speu Province.	០០១ MIH / 2016 (ប្រកាស អនុញ្ញាតផ្ទាល់)
LC_140	Pen Savann	Preak Reang Village, Toek Hot Commune, Rolea B'ier District, Kampong Chhnang Province.	០៤០ MIH / 2016 (ប្រកាស អនុញ្ញាតផ្ទាល់)
LC_141	Nei Chandoeun	Kontout Village, Srangae Commune, Treang District, Tekeo Province.	០៤២ MIH / 2016 (ប្រកាស អនុញ្ញាតផ្ទាល់)
LC_142	Heng Sivaro	Samrong Village, Krang Yov Commune, S'ang District, Kandal Province.	០៥៧ MIH / 2016 (ប្រកាស អនុញ្ញាតផ្ទាល់)
LC_098	Nong Naret	Tros Village, Balangk Commune, Baray district, Kampong Thom Province	០៥៥ MIH / 2016 (ពន្យារ ស្តុលភាពពន្ធដារក្រោយ)
LC_139	Mrs. Siev Sreymean	Kampong Krobei Village, Kokor Commune, Kampong Siem District, Kampong Cham Province.	០៤១ MIH / 2016 (ប្រកាស អនុញ្ញាតផ្ទាល់)
LC_143	SOMA FARM ( CAMBODIA )	Khnar Village, Krang Thnoung Commune, Bati District, Tekeo Village.	០៧២ MIH / 2016 (ប្រកាស អនុញ្ញាតផ្ទាល់)
LC_144	Uon Bunnat	Hanchey Village, Hanchey Commune, Kampongseam District, Kampong Cham Province.	០៧៧ MIH / 2016 (ប្រកាស អនុញ្ញាតផ្ទាល់)
LC_145	Sok Sophara	Ou Tontuem Village, Ta Sagn Commune, Samlout Distract, Battambang Province.	០៧៦ MIH / 2016 (ប្រកាស អនុញ្ញាតផ្ទាល់)
LC_063	Kampot Port Co., Ltd.	Kilo 12 Village, Koh Toch Commune, Teouk Chhou District, Kampot Province	១៣៥ MIH / 2015 (ពន្យារ ស្តុលភាពពន្ធដារក្រោយ)
LC_146	Cheang Choun	Cherteal Plous Village, Prey Ampork Commune, Kirivong District, Takeo Province.	០៨៨ MIH / 2016 (ប្រកាស អនុញ្ញាតផ្ទាល់)
LC_147	moy phallang	Srah Ta Pen Village, Chhoeung Prey Commune, Bateay District, Kampong Cham Province.	០៩៩ MIH / 2016 (ប្រកាស អនុញ្ញាតផ្ទាល់)
LC_148	Long Mab	Po Village, Rong Roueng Commune, Stoung District, Kampong Thom Province.	០៩៨ MIH / 2016 (ប្រកាស អនុញ្ញាតផ្ទាល់)
LC_149	Moy Buheng	Phnom Del Village, Tang Krang Commune, Batheay District, Prey Veng Province.	០៩៧ MIH / 2016 (ប្រកាស អនុញ្ញាតផ្ទាល់)
LC_150	Chea Sambo	Neang Laor Village, Treal Commune, Baray District, Kampong Thom Province	១០៣ MIH / 2016 (ប្រកាស អនុញ្ញាតផ្ទាល់)
UL_009	Seav Hout	6 village, Preak khsay kho, Peam Ror District, Prey Veng Province.	
LC_151	Ou Sarim	Boueng Krum Loeu Village, Boueng Krum Commune, Lovea Em District, Kandal Province.	១២០ MIH / 2016 (ប្រកាស អនុញ្ញាតផ្ទាល់)
LC_152	Phon KimLong	koh keo Krom Village, Koh Keo Commune, Lovea Em District, Kandal Province.	១០៩ MIH / 2016 (ប្រកាស អនុញ្ញាតផ្ទាល់)
LC_158	Lim Heng Group	Koh Thmey Village, Anlong Veng Commune, Anlong Veng District, Oddomeanchey Province.	១៣៦ MIH / 2016 (ប្រកាស អនុញ្ញាតផ្ទាល់)
LC_153	Eng Chhayhout	Chhoungtrodok Village, Roka Commune, Sangke District, Battambang Province.	១១០ MIH / 2016 (ប្រកាស អនុញ្ញាតផ្ទាល់)
LC_154	Chim Sideth	Kampongtrmlou Village, Koh mith Commune, Kampongseam District, Kampongcham Province.	១០៨ MIH / 2016 (ប្រកាស អនុញ្ញាតផ្ទាល់)
LC_157	Mrs. Va Pisal	Preak prasobloeu Village, Preak Prasob Commune, Preak Prasob District, Kratie Province.	១៥៤ MIH / 2016 (ប្រកាស អនុញ្ញាតផ្ទាល់)
LC_124	Ouknha Kok An	Ti Pream Muy Village, Sangkat Khsam, Krong Kampong Chhnang , Kampong Chhnang Province	313/14 អគ
8	Kampong Cham Water Supply	Phum Ti Dob Buon, Sangkat Kampong Cham, Kampong Cham City	១៤០ MIH / 2016 (ប្រកាស អនុញ្ញាតអចិន្ត្រៃយ៍)
LC_155	Mrs. Phoung Maly	Speanthmey Village, Keanchrey Commune, Kampongseam District, Kampongcham Province.	១០៧ MIH / 2016 (ប្រកាស អនុញ្ញាតផ្ទាល់)
LC_156	Mrs. Meas Channa	Toek Kleang Village, Toek Kleang Commune, Lovea Em District, Kandal Province.	១០២ MIH / 2016 (ប្រកាស អនុញ្ញាតផ្ទាល់)
LC_159	Mrs Eng Saroun	Preak Tamoung Village, Phsar Commune, Boribo District, Kampong Chhnang Province.	១៥៨ MIH / 2016 (ប្រកាស អនុញ្ញាតផ្ទាល់)
LC_161	Mr. Por Pouch	Oh Am Village, Sre Khtum Commune, Keo Seyma District, Modolkiri Province.	១៥៦ MIH / 2016 (ប្រកាស អនុញ្ញាតផ្ទាល់)
LC_162	Mr. Sear Seangheng	Sandan Village, Sandan Commune, Sambo District, Kratie Province.	១៥៥ MIH / 2016 (ប្រកាស អនុញ្ញាតផ្ទាល់)
LC_165	Mr. Moy Sophorn	Preak Ta Ben Village, Svay Romeat Commune, Khsach Kandal District, Kandal Province.	០៧៩ MIH / 2016 (ប្រកាស អនុញ្ញាតផ្ទាល់)
LC_166	Mr. Kang Senkosal	Preak Chhmudoh Village, Preak Tasor Commune, Pur Rieng District, Prey Veng.	០២៧ MIH / 2016 (ប្រកាស អនុញ្ញាតផ្ទាល់)

Code	Operator Name	Address	License
LC_121	Tho Mak Import Export and Construction Co.Ltd	Khlong Village, Sangkat Ou Tavao, Krong Pailin, Pailin Province	១៦០ MIH / 2016 (ប្រកាសអនុញ្ញាតដំឡើង)
LC_163	Mrs. Chea Savoeun	Roleang Chak Village, Roleang Kroeul Commune, Samrong Tong District, Kampong Speu Province.	១៥៩ MIH / 2016 (ប្រកាសអនុញ្ញាតដំឡើង)
LC_167	Mrs. Srun Srey Oun	Koh Toch Village, Sangkat Koh Rong, Krong Preah Sihanouk, Sihanouk Vill	១៨៧ MIH / 2016 (ប្រកាសអនុញ្ញាតដំឡើង)
LC_168	Mr. Yomg Sambath	Hanchey Village, Hanchey Commune, Chhlong District, Kratie Province.	០៣១ MIH / 2016 (ប្រកាសអនុញ្ញាតដំឡើង)
LC_169	Mr. Chrek Bo	Chro Va Village, Kantout Commune, Chet Bory District, Kratie Province.	០២៨ MIH / 2016 (ប្រកាសអនុញ្ញាតដំឡើង)
LC_160	Mr. Tob Sophal	Mohalumpiang Ti 1 village, Sen dey Commune, Samroung District, Kampong Speu Province.	១៥៧ MIH / 2016 (ប្រកាសអនុញ្ញាតដំឡើង)
LC_170	PHNOM PENH SEZ Co., Ltd.	Kanthouk Village, Sangkat Kanthouk, Khan Porsenchey, Phnom Penh.	៣១៣ MIH / 2015 (ប្រកាសអនុញ្ញាតដំឡើង)
LC_001	Mekong Portable Co.Ltd	Plov Lum, Chroy Am Pil Village, Kbal Kaoh district, Khan Chbar Ampov, Phnom Penh	១២៤ MIH / 2016 (ប្រកាសអនុញ្ញាតដំឡើង)
LC_171	Mr. Mean Phouen	Krang Thom Village, Lumpong Commune, Bati District, Takeo Province.	១៦៤ MIH / 2016 (ប្រកាសអនុញ្ញាតដំឡើង)
LC_164	Mr. Sreav Chek	Svay Tong Village, Khvav Commune, Samrong District, Takeo Province.	១៥៣ MIH / 2016 (ប្រកាសអនុញ្ញាតដំឡើង)
LC_171	Mr. Say Hong	Tang Ro Ngeang Village, Mohasang Commune, Phnom Srouch District, Kampong Speu Province.	១៦៦ MIH / 2016 (ប្រកាសអនុញ្ញាតដំឡើង)
LC_125	Ly Dara	Salalek Praim Village, Ou Ruessei Commune, Kampong Tralach District, Kampong Chhnang Province.	១៨៥ MIH / 2016 (ប្រកាសអនុញ្ញាតដំឡើង)
LC_172	Mr. Khegn Tai Veng	Preak Thmey Village, Puthiban Commune, Koh Thom District, Kandal Province.	១៦៧ MIH / 2016 (ប្រកាសអនុញ្ញាតដំឡើង)
LC_173	Mrs. Seang Nakea	Damnak khla Village, Phnom Toch Commune, Ou Dong District, Kampong Speu Province.	១៨៦ MIH / 2016 (ប្រកាសអនុញ្ញាតដំឡើង)
LC_174	Mr. Pen Makaravuth	Santey Village, Preak Pur Commune, Srey Santhor District, Kampong Cham Province.	១៦៥ MIH / 2016 (ប្រកាសអនុញ្ញាតដំឡើង)
LC_022	Mr.Lang Hav	Russei Chroay Village, Russei Chroay Commune, Mukh Kamphool District, Kandal Province.	០៥៤ MIH / 2016 (ពន្យារសុពលភាពរយៈពេល៣ឆ្នាំចុងក្រោយ)
LC_004	Mr. Nget Sothy	Preak Kdam 1 Village,Koh Chin Commune, Ponhea Leu District, Kandal Province.	១១២ MIH / 2015 (ពន្យារសុពលភាព៣ឆ្នាំចុងក្រោយ)
LC_130	Mrs. Chhuon Florina	Lek Pir Village, Sangkat Kampong Leav, Prey Veng City, Prey Veng Province.	១៨៣ MIH / 2015 (ប្រកាសពន្យារសុពលភាព៣ឆ្នាំចុងក្រោយ)
LC_007	Khenh Tayveng	Preak Balatchhoeung Village,Treyu Sla Commune, S'ang District, Kandal Province.	៣៣១ MIH / 2015 (ប្រកាសពន្យារសុពលភាព៣ឆ្នាំចុងក្រោយ)
LC_131	Mr. Seng You	Preak Krobao Village, Preak Krobao Commune, Peam Chor District, Prey Veng Province.	២១៩ MIH / 2015 (ប្រកាសពន្យារសុពលភាព៣ឆ្នាំ)
LC_006	Mrs.Chan Nary	Koh Teav Kor Village,Sampov Poun Commune, Koh Thum District, Kandal Province.	១៩៥ MIH / 2015 (ប្រកាសពន្យារសុពលភាព៣ឆ្នាំចុងក្រោយ)
LC_042	Mr. Hem March	Bor Rokar Village, Samrong Commune, Samrong District,Takeo Province.	២៤៧ MIH / 2015 (ប្រកាសពន្យារសុពលភាព៣ឆ្នាំចុងក្រោយ)
LC_175	Mr. Liv Chung Chamnan	Pang Rolem Village, Sangkat Ou Tavao, Krong Pailin, Pailin Province.	១៩៥ MIH / 2016 (ប្រកាសអនុញ្ញាតដំឡើង)
LC_040	Mr. Oum Chanto	Stoeung Village, Ou Saray Commune, Tram Kak district, Takeo Province	២០៤ MIH / 2015 (ប្រកាសពន្យារសុពលភាព៣ឆ្នាំចុងក្រោយ)
LC_038	Mr. Lay Longdy	Prey Chhoeu Teal Village, Prey Pdao Commune, Prey Kabbas District,Takeo Province	២០៧ MIH / 2015 (ប្រកាសពន្យារសុពលភាព៣ឆ្នាំចុងក្រោយ)
LC_176	Mr. Leng Simtheng	Svay sronos ti 1 Village, Rokar Ah Commune, Kongmeas District, Kampong cham Province.	១៩៦ MIH / 2016 (ប្រកាសអនុញ្ញាតដំឡើង)
LC_009	Kin Sokhom	Ruessei Srok Village, Khpob Commune, S'ang District, Kandal Province.	១៩៣ MIH / 2015 (ប្រកាសពន្យារសុពលភាព៣ឆ្នាំចុងក្រោយ)
LC_177	Mr. Khom Menghong	Khporb Village, Moharkghong Commune, Koh Sotin District, Kampong Cham Province.	១៩៧ MIH / 2016 (ប្រកាសអនុញ្ញាតដំឡើង)
LC_182	Mr. Moeu Mean	Saram Village, Peang Lovea Commune, Oudong District, KampongSpeu Province.	២០៩ MIH / 2016 (ប្រកាសអនុញ្ញាតដំឡើង)
LC_017	Mr. Meng Lai	Preak Thong Village, Praek Loung Commune, Khsach Kandal District, Kandal Province.	២១៨ MIH / 2015 (ប្រកាសពន្យារសុពលភាព៣ឆ្នាំចុងក្រោយ)
LC_111	Mr. Chea Veng	Kouk Mon Village, Dam Daek Commune, Sot Nikom District, Siem Reap Province.	០១៥ MIH / 2016 (ប្រកាសពន្យារសុពលភាព៣ឆ្នាំចុងក្រោយ)
LC_029	Mrs.Theng Dany	Puk Russeikrom Village, Puk Russei Commune, Khsach Kandal District, Kandal Province.	២៤៥ MIH / 2015 (ប្រកាសពន្យារសុពលភាព៣ឆ្នាំចុងក្រោយ)
LC_010	Mr. Lak Mengly	Preak Sleng Village,Talon Commune, S'ang District, Kandal Province.	២៣៩ MIH / 2015 (ប្រកាសពន្យារសុពលភាព៣ឆ្នាំចុងក្រោយ)

Code	Operator Name	Address	License
LC_178	Mr. Pech Chhoeun	Samrong Tong Kandal Village, Samrong Tong Commune, Samrong Tong District, KampongSpeu Province.	២០៦ MIH / 2016 (ប្រកាសអនុញ្ញាតផ្ទាល់)
LC_180	Mr. Meng Songhak	Tropeang Lpeak Village, Yuthsamaky Commune, Oudong District, KampongSpeu Province.	២០៧ MIH / 2016 (ប្រកាសអនុញ្ញាតផ្ទាល់)
LC_181	Mr. Nuon Sophanara	Kampongtrach Village, Kampongtrach Commune, Romeasheak District, Svay Rieng Province.	២០៨ MIH / 2016 (ប្រកាសអនុញ្ញាតផ្ទាល់)
LC_064	Mrs. Ing Tom	Domnak Kantout Village, Domnak Kantout Khang Tbong Commune, Kampong Trach District, Kampot Province	២២១ MIH / 2015 (ប្រកាសពន្យារស្តុលភាពពាណិជ្ជាប័ណ្ណក្រោយ)
LC_179	Mr. Tit Sarou	Chork Teak Village, Tropeang Chor Commune, Oral District, KampongSpeu Province	២០៥ MIH / 2016 (ប្រកាសអនុញ្ញាតផ្ទាល់)
LC_053	Mrs. Lim Muy	Lek 5 Village, Treng Troyoeung Commune, Phnom Srouch District, Kampong Speu Province.	២៣០ MIH / 2015 (ប្រកាសពន្យារស្តុលភាពពាណិជ្ជាប័ណ្ណក្រោយ)
LC_092	Mrs. Um Someth	Samrong Village, Kbal Trach Commune, Kro Kor District, Pursat Province.	៣២៤ MIH / 2015 (ប្រកាសពន្យារស្តុលភាពពាណិជ្ជាប័ណ្ណក្រោយ)
LC_091	Mr. Khun Lam	Srokor Village, Boeung Kna, Bakan District, Pursat Province.	២២៨ MIH / 2015 (ប្រកាសពន្យារស្តុលភាពពាណិជ្ជាប័ណ្ណក្រោយ)
LC_075	Mr. Chin Ratha	Sna Pi Muk Village, Prek Khporp Commune, Ek Phnom District, Battambang Province.	៣៥៣ MIH / 2015 (ប្រកាសពន្យារស្តុលភាពពាណិជ្ជាប័ណ្ណក្រោយ)
LC_034	Nun Reaksmeay	Kampong Loung Village, Angkor Borey Commune, Angkor Borey District, Takeo Province.	៣៤២ MIH / 2015(ប្រកាសពន្យារស្តុលភាពពាណិជ្ជាប័ណ្ណក្រោយ)
LC_002	Prey Kob Construction Co.Ltd	Pluv Lum, Phsar Lech Village, Praek Phnov district, Khan Praek Phnov, Phnom Penh	១៤៥ MIH / 2016(ប្រកាសពន្យារស្តុលភាពពាណិជ្ជាប័ណ្ណក្រោយ)
LC_049	Mr. Eang Mab	Srang Village, Srang Commune, Korg Pisey Distrct, Kampong Speu Province.	១៩០ MIH / 2015 (ប្រកាសពន្យារស្តុលភាពពាណិជ្ជាប័ណ្ណក្រោយ)
LC_054	Mrs. Pom Chab	Anlongchrey Village, Brambeyum Commune, Thporg District, Kampong Speu Province.	១៩១ MIH / 2015 (ប្រកាសពន្យារស្តុលភាពពាណិជ្ជាប័ណ្ណក្រោយ)
LC_051	Mr. Chhel Rithy	Prey pdav Village, Tropeang Korg Commune, Samrong Tomg District, Kampong Speu.	២២២ MIH / 2015 (ប្រកាសពន្យារស្តុលភាពពាណិជ្ជាប័ណ្ណក្រោយ)
LC_047	Mr. Tong Sophea	Krangchek Village, Krangchek Commune, Udong District, Kampong Speu Province.	២១៧ MIH / 2015 (ប្រកាសពន្យារស្តុលភាពពាណិជ្ជាប័ណ្ណក្រោយ)
LC_046	Mr. Sang Vuthy	Chamkarloung Village, Vangchas Commune, Ou dong District, Kampong Speu Province.	៣៣៣ MIH / 2015 (ប្រកាសពន្យារស្តុលភាពពាណិជ្ជាប័ណ្ណក្រោយ)
LC_066	Vong Sophoan	Chheur Teal Village, Chhuk Commune, Chhuk District, Kompot Province	១៩៦ ឧប.ទស.ប្រក
LC_080	Vat Sovannary	Boeung Cheng Village, Snoeung Commune, Banon District, Battambang Province.	៦៨២ ឧប.ទស.ប្រក
LC_014	Rom Arun	Preak Thmei Village, Praek Thmei Commune, Koh Thum District, Kandal Province.	228 ឧប.ទស.ប្រក
LC_016	Horn Ngoun	Kampong Chomlorn Village, Kampong Chomlorn Commune, Khsach Kandal District, Kandal Province.	២៤២ MIH / 2016 (ប្រកាសអនុញ្ញាតជំនួស)
LC_045	Borey Kamkior Co.Ltd.	Svaykrovan Villages, Svaykrovan Commune, Chbamorn District, Kampong Speu.	៦០១ MIH / 2014 (ប្រកាសអនុញ្ញាតជំនួស)
LC_062	Mrs.An Mouy Kan	Tro Paing Ropov Village, Praek Tnoat Commune, Teouk Chhou District, Kampot Province	០១១ MIH / ២០១៧ (ប្រកាសពន្យារស្តុលភាពពាណិជ្ជាប័ណ្ណក្រោយ)
LC_027	Mrs.Heng Leaksey	Preak Bak Village,Praek Tonlob Commune, Leuk Daek District, Kandal Province.	០០៦ MIH / ២០១៧ (ប្រកាសអនុញ្ញាតជំនួស)
LC_126	Sothevy Lungvek Apivorth Co.,Ltd.	Oknha Pang Village, Longveaek Commune, Kampong Tralach District, Kampong Chhnang Province	០០២ MIH / ២០១៧
LC_023	Mrs. Chea EngLay	Preak Angkugn Village, Siem Reap Commune, Kandal Stueng District, Kandal Province.	០០៣ MIH / ២០១៧ (ប្រកាសអនុញ្ញាតជំនួស)
LC_052	Meas Vanthoeun	Samrong Village, Tropeangkorg Commune, Samrong Tomg District Kampong Speu Province.	២១៥ MIH / 2015 (ប្រកាសពន្យារស្តុលភាពពាណិជ្ជាប័ណ្ណក្រោយ)
LC_110	Pouk District Water Supply Co.,Ltd.	Tacheat Village, Samrongyea Commune, Pouk District, Siem Reap Province.	៧៨៣ ឧប.ទស.ប្រក
13	Modulkiri Public Water Supply	Doeumsrol Village, Sangkat Monorom, Krong Senmonorom, Modulkiri Province.	១៤៨ MIH / 2016
LC_128	Mr.Amnot Viriya	Sna Pol Village, Rokar Commune, Pea Reang, Prey Veng Province.	២៤៣ MIH/201៦ (ប្រកាសអនុញ្ញាតជំនួស)
LC_123	Ket Construction Co.Ltd	Boeungpreav Loeu Village, BoeungPreav Commune, Sre Ambel District, Koh Kong Province.	១១០ MIH / ២០១៧ (ប្រកាសអនុញ្ញាតជំនួស)
LC_134	Chhom Dalis	PreakPdav Village, Kampong Trabek Commune, Kampong Trabek District, Prey Veng Province.	១០៣ MIH / ២០១៧ (ប្រកាសពន្យារស្តុលភាពពាណិជ្ជាប័ណ្ណក្រោយ)

► Indicator 1 : Name/type of Water source

Code	Operator Name	Data
2	Siem Reap Water Supply Authority (SRWSA)	n/a
3	Preah Sihanouk Water Supply	n/a
4	Kampot Water Supply	n/a
5	Pursat Water Supply	n/a
6	Battambang Water Supply	n/a
7	Kampong Thom Water Supply	n/a
9	Svay Rieng Water Supply	n/a
10	Stung Treng Water Supply	n/a
11	Stong Water Supply (in K. Thom)	n/a
12	Tang Krasang Water Supply (in K. Thom)	n/a
UL_001	ឃុំអភិវឌ្ឍន៍	n/a
UL_002	ឃុំអភិវឌ្ឍន៍	n/a
UL_003	ក្រុមហ៊ុនភូមិនិមិត	n/a
UL_004	ក្រុមហ៊ុនភូមិនិមិត	n/a
UL_005	ក្រុមហ៊ុនធាយណាខនស្រុកស័នអធិនៀ	n/a
UL_006	ក្រុមហ៊ុនធាយណាខនស្រុកស័នអធិនៀ	n/a
LC_003	Chhorn Dalis	n/a
LC_011	Heang Dara	n/a
LC_019	Mrs.Kry Kaovney	n/a
LC_008	Leng Khiev	ទន្លេបាសាក់
LC_013	Mr. Srun Bunpor	n/a
LC_018	Mr.Nob Sinat	n/a
LC_015	Mr. Chea Kheng	n/a
LC_048	Mrs. Sek Kong	n/a
LC_012	Golden Bull Co., Ltd.	n/a
LC_030	Phae Dalin	n/a
LC_028	Tun Leakhena	n/a
LC_026	Ngov Chhorvorn	ទន្លេមេគង្គ
LC_033	Nun Reaksmey	n/a
LC_037	Mrs. Uy Sokha	n/a
LC_035	Mr. Srey Sokhom	n/a
LC_024	Mr. Seang Sengheab	ស្ទឹងព្រែកត្នោត
LC_025	Mr. Chea Sron	n/a
LC_086	Mr. Eng Chayhout	n/a
LC_050	Mr. Soung Sarath	n/a
LC_057	Ann Ko Water Suply Co.Ltd	n/a
LC_065	Vong Reakmey	n/a
LC_039	Chhun Sarin	n/a
LC_068	Mr. Try Yousith	n/a
LC_061	Mr. Chun Vanthorn	n/a
LC_093	Mrs. Em Sophy	n/a
LC_041	Mr. Lim Sreng	n/a
LC_122	LYP Group	n/a
LC_115	Sang Seab	n/a
LC_118	Seang Kimsreng	n/a
LC_067	Neang KiKemEng	n/a
LC_069	Sok Nay	n/a
LC_070	Chev Sony	n/a
LC_079	Boeung Loum	n/a
LC_113	Mrs. Chhuon Florina	n/a
LC_071	Mr. Ey Mao	n/a
LC_076	Mr. Tak Chan Kouy	n/a
LC_073	Mr. Dout Touch	n/a
LC_105	Mr. Ly Vongdy	n/a
1	Phnom Penh Water Supply Authority (PPWSA)	n/a
LC_100	Ly Heng	ទន្លេ
LC_099	Touch Sophoan	n/a
LC_104	Lan Chheav	ទន្លេមេគង្គ
LC_103	Khun Sophal	អណ្តូង
LC_089	Anco Water Supply	n/a
LC_116	Un Channary	n/a
LC_129	Mr.Amnot Viriya	n/a
LC_133	Mr. Chea Sarith	n/a

LC_036	Mr. Khorl Vibol	n/a
LC_020	Mrs. Ngin Vanna	ទិន្នន័យមិនគ្រប់គ្រាន់
LC_112	Touch Saren	n/a
LC_114	Kav San	n/a
LC_119	Tang Hokkhy	n/a
LC_117	Sorn Champey	n/a
LC_096	Sovandara Pheanich Co.Ltd	n/a
LC_094	Vong Sambo	n/a
LC_135	Tai Seng Phalit Teuksaat Co., Ltd.	n/a
LC_132	Mr.Long Rin	n/a
LC_095	Mr. Thlang Sarath	n/a
LC_109	Mrs. Hoy Leakhena	n/a
LC_090	Sok Ngoun	n/a
LC_056	Tov Nearyphall	n/a
LC_083	Toeum Sarert	n/a
LC_082	Chea Sokhorn	n/a
LC_072	Mrs. Rong Keang	n/a
LC_108	Mr. Poav Dort	n/a
LC_088	Mr.Touch Sithy	n/a
LC_085	Mrs. Heak DaraSamphors	n/a
LC_084	Mr. Men Ngouk	n/a
LC_078	Mrs. Chea Chhunlim	n/a
LC_081	Frong Nasy Co. Ltd	n/a
LC_107	Chea Sambou	n/a
LC_060	Ouknha Lim Heng	n/a
LC_031	Mak Thun	n/a
LC_032	Mak Thun	n/a
LC_102	Dy Pisey	អន្តរាគមន៍
LC_021	Mrs.Ngin Vanna	ទិន្នន័យមិនគ្រប់គ្រាន់
LC_077	Mr. Kho Bunheat	n/a
LC_005	Mrs. Chan Nary	ទិន្នន័យមិនគ្រប់គ្រាន់
LC_127	Mr. Sim Pheakdey	n/a
LC_106	Mr. Tho Sopheak	n/a
LC_101	Dy Pisey	អន្តរាគមន៍
LC_097	Nob Sida	n/a
UL_008	Vorn Bros	n/a
LC_058	Sear Ben	n/a
LC_055	Khun Appivath Co.Ltd	n/a
LC_074	Mr. Leang Davich	n/a
LC_137	Mean Rithy	n/a
LC_059	Eng Kang Development Coperation and Construction Co.Ltd	n/a
LC_120	Khoo Meng Huot Co.Ltd	n/a
LC_043	Mr. Cheak Kimly	n/a
LC_044	Mr. Sous Pouy	n/a
LC_138	Chheng Sokunthea	n/a
LC_140	Pen Savann	n/a
LC_141	Nei Chandoeun	n/a
LC_142	Heng Sivaro	n/a
LC_098	Nong Naret	n/a
LC_139	Mrs. Siev Sreymean	n/a
LC_143	SOMA FARM ( CAMBODIA )	n/a
LC_144	Uon Bunnat	n/a
LC_145	Sok Sophara	n/a
LC_063	Kampot Port Co., Ltd.	n/a
LC_146	Cheang Choun	n/a
LC_147	moy phallang	n/a
LC_148	Long Mab	n/a
LC_149	Moy Buheng	n/a
LC_150	Chea Sambo	n/a
UL_009	Seav Hout	n/a
LC_151	Ou Sarim	n/a
LC_152	Phon KimLong	n/a
LC_158	Lim Heng Group	n/a
LC_153	Eng Chhayhout	n/a
LC_154	Chim Sideth	n/a
LC_157	Mrs. Va Pisal	n/a
LC_124	Ouknha Kok An	n/a



8	Kampong Cham Water Supply	n/a
LC_155	Mrs. Phoung Maly	n/a
LC_156	Mrs. Meas Channa	n/a
LC_159	Mrs Eng Saroun	n/a
LC_161	Mr. Por Pouch	n/a
LC_162	Mr. Sear Seangheng	n/a
LC_165	Mr. Moy Sophom	n/a
LC_166	Mr. Kang Senkosal	n/a
LC_121	Tho Mak Import Export and Construction Co.Ltd	n/a
LC_163	Mrs. Chea Savoeun	n/a
LC_167	Mrs. Srun Srey Oun	n/a
LC_168	Mr. Yomg Sambath	n/a
LC_169	Mr. Chrek Bo	n/a
LC_160	Mr. Tob Sophal	n/a
LC_170	PHNOM PENH SEZ Co., Ltd.	n/a
LC_001	Mekong Portable Co.Ltd	n/a
LC_171	Mr. Mean Phouen	n/a
LC_164	Mr. Sreav Chek	n/a
LC_171	Mr. Say Hong	n/a
LC_125	Ly Dara	n/a
LC_172	Mr. Khegn Tai Veng	n/a
LC_173	Mrs. Seang Nakea	n/a
LC_174	Mr. Pen Makaravuth	n/a
LC_022	Mr.Lang Hav	n/a
LC_004	Mr. Nget Sothy	ទន្លេសាប
LC_130	Mrs. Chhuon Florina	n/a
LC_007	Khenh Tayveng	n/a
LC_131	Mr. Seng You	n/a
LC_006	Mrs.Chan Nary	ទន្លេបាសាក់
LC_042	Mr. Hem March	n/a
LC_175	Mr. Liv Chung Chamnan	n/a
LC_040	Mr. Oum Chanto	n/a
LC_038	Mr. Lay Longdy	n/a
LC_176	Mr. Leng Simtheng	n/a
LC_009	Kin Sokhom	ទន្លេបាសាក់
LC_177	Mr. Khorn Menghong	n/a
LC_182	Mr. Moeu Mean	n/a
LC_017	Mr. Meng Lai	n/a
LC_111	Mr. Chea Veng	n/a
LC_029	Mrs.Theng Dany	ទន្លេបាសាក់
LC_010	Mr. Lak Mengly	ទន្លេបាសាក់
LC_178	Mr. Pech Chhoeun	n/a
LC_180	Mr. Meng Songhak	n/a
LC_181	Mr. Nuon Sophanara	n/a
LC_064	Mrs. Ing Torn	n/a
LC_179	Mr. Tit Sarou	n/a
LC_053	Mrs. Lim Muy	n/a
LC_092	Mrs. Um Someth	n/a
LC_091	Mr. Khun Lam	n/a
LC_075	Mr. Chin Ratha	n/a
LC_034	Nun Reaksmey	n/a
LC_002	Prey Kob Construction Co.Ltd	n/a
LC_049	Mr. Eang Mab	n/a
LC_054	Mrs. Pom Chab	n/a
LC_051	Mr. Chhel Rithy	n/a
LC_047	Mr. Tong Sophea	n/a
LC_046	Mr. Sang Vuthy	n/a
LC_066	Vong Sophoan	n/a
LC_080	Vat Sovannary	n/a
LC_014	Rom Arun	n/a
LC_016	Horn Ngoun	n/a
LC_045	Borey Kamkior Co.Ltd.	n/a
LC_062	Mrs.An Mouy Kan	n/a
LC_027	Mrs.Heng Leaksey	ទន្លេមេគង្គ
LC_126	Sothevy Lungvek Apivorth Co.,Ltd.	n/a
LC_023	Mrs. Chea EngLay	n/a

LC_052	Meas Vanthoeun	n/a
LC_110	Pouk District Water Supply Co.,Ltd.	n/a
13	Modulkiri Public Water Supply	n/a
LC_128	Mr.Amnot Viriya	n/a
LC_123	Ket Construction Co.Ltd	n/a
LC_134	Chhom Dalis	n/a

► Indicator 2 : Availability of water source year round

Code	Operator Name	Data
2	Siem Reap Water Supply Authority (SRWSA)	n/a
3	Preah Sihanouk Water Supply	n/a
4	Kampot Water Supply	n/a
5	Pursat Water Supply	n/a
6	Battambang Water Supply	n/a
7	Kampong Thom Water Supply	n/a
9	Svay Rieng Water Supply	n/a
10	Stung Treng Water Supply	n/a
11	Stong Water Supply (in K. Thom)	n/a
12	Tang Krasang Water Supply (in K. Thom)	n/a
UL_001	ឃុនអភិវឌ្ឍន៍	n/a
UL_002	ឃុនអភិវឌ្ឍន៍	n/a
UL_003	ក្រុមហ៊ុនភូមិនិមិត	n/a
UL_004	ក្រុមហ៊ុនភូមិនិមិត	n/a
UL_005	ក្រុមហ៊ុនធាយណាខនស្រុកស៊ីនអេជ័នៀ	n/a
UL_006	ក្រុមហ៊ុនធាយណាខនស្រុកស៊ីនអេជ័នៀ	n/a
LC_003	Chhom Dalis	n/a
LC_011	Heang Dara	n/a
LC_019	Mrs.Kry Kaovney	n/a
LC_008	Leng Khiev	y
LC_013	Mr. Srun Bunpor	n/a
LC_018	Mr.Nob Sinat	n/a
LC_015	Mr. Chea Kheng	n/a
LC_048	Mrs. Sek Kong	n/a
LC_012	Golden Bull Co., Ltd.	n/a
LC_030	Phae Dalin	n/a
LC_028	Tun Leakhena	n/a
LC_026	Ngov Chhorvom	y
LC_033	Nun Reaksmey	n/a
LC_037	Mrs. Uy Sokha	n/a
LC_035	Mr. Srey Sokhom	n/a
LC_024	Mr. Seang Sengheab	y
LC_025	Mr. Chea Sron	n/a
LC_086	Mr. Eng Chayhout	n/a
LC_050	Mr. Soung Sarath	n/a
LC_057	Ann Ko Water Suply Co.Ltd	n/a
LC_065	Vong Reakmey	n/a
LC_039	Chhun Sarin	n/a
LC_068	Mr. Try Yousith	n/a
LC_061	Mr. Chun Vanthorn	n/a
LC_093	Mrs. Em Sophy	n/a
LC_041	Mr. Lim Sreng	n/a
LC_122	LYP Group	n/a
LC_115	Sang Seab	n/a
LC_118	Seang Kimsreng	n/a
LC_067	Neang KiKemEng	n/a
LC_069	Sok Nay	n/a
LC_070	Chev Sony	n/a
LC_079	Boeung Loum	n/a
LC_113	Mrs. Chhuon Florina	n/a
LC_071	Mr. Ey Mao	n/a
LC_076	Mr. Tak Chan Kouy	n/a
LC_073	Mr. Dout Touch	n/a
LC_105	Mr. Ly Vongdy	n/a
1	Phnom Penh Water Supply Authority (PPWSA)	n/a
LC_100	Ly Heng	y

LC_099	Touch Sophoan	n/a
LC_104	Lan Chheav	y
LC_103	Khun Sophal	y
LC_089	Anco Water Supply	n/a
LC_116	Un Channary	n/a
LC_129	Mr.Amnot Viriya	n/a
LC_133	Mr. Chea Sarith	n/a
LC_036	Mr. Khorl Vibol	n/a
LC_020	Mrs. Ngin Vanna	y
LC_112	Touch Saren	n/a
LC_114	Kav San	n/a
LC_119	Tang Hokkhy	n/a
LC_117	Som Champey	n/a
LC_096	Sovandara Pheanich Co.Ltd	n/a
LC_094	Vong Sambo	n/a
LC_135	Tai Seng Phalit Teuksaat Co., Ltd.	n/a
LC_132	Mr.Long Rin	n/a
LC_095	Mr. Thlang Sarath	n/a
LC_109	Mrs. Hoy Leakhena	n/a
LC_090	Sok Ngoun	n/a
LC_056	Tov Nearyphall	n/a
LC_083	Toeum Sarert	n/a
LC_082	Chea Sokhom	n/a
LC_072	Mrs. Rong Keang	n/a
LC_108	Mr. Poav Dort	n/a
LC_088	Mr.Touch Sithy	n/a
LC_085	Mrs. Heak DaraSamphors	n/a
LC_084	Mr. Men Ngouk	n/a
LC_078	Mrs. Chea Chhunlim	n/a
LC_081	Frong Nasy Co. Ltd	n/a
LC_107	Chea Sambou	n/a
LC_060	Ouknha Lim Heng	n/a
LC_031	Mak Thun	n/a
LC_032	Mak Thun	n/a
LC_102	Dy Pisey	y
LC_021	Mrs.Ngin Vanna	y
LC_077	Mr. Kho Bunheat	n/a
LC_005	Mrs. Chan Nary	y
LC_127	Mr. Sim Pheakdey	n/a
LC_106	Mr. Tho Sopheak	n/a
LC_101	Dy Pisey	y
LC_097	Nob Sida	n/a
UL_008	Vorn Bros	n/a
LC_058	Sear Ben	n/a
LC_055	Khun Appivath Co.Ltd	n/a
LC_074	Mr. Leang Davich	n/a
LC_137	Mean Rithy	n/a
LC_059	Eng Kang Development Coperation and Construction Co.Ltd	n/a
LC_120	Khoo Meng Huot Co.Ltd	n/a
LC_043	Mr. Cheak Kimly	n/a
LC_044	Mr. Sous Pouy	n/a
LC_138	Chheng Sokunthea	n/a
LC_140	Pen Savann	n/a
LC_141	Nei Chandoeun	n/a
LC_142	Heng Sivaro	n/a
LC_098	Nong Naret	n/a
LC_139	Mrs. Siev Sreymean	n/a
LC_143	SOMA FARM ( CAMBODIA )	n/a
LC_144	Uon Bunnat	n/a
LC_145	Sok Sophara	n/a
LC_063	Kampot Port Co., Ltd.	n/a
LC_146	Cheang Choun	n/a
LC_147	moy phallang	n/a
LC_148	Long Mab	n/a
LC_149	Moy Buheng	n/a
LC_150	Chea Sambo	n/a

UL_009	Seav Hout	n/a
LC_151	Ou Sarim	n/a
LC_152	Phon KimLong	n/a
LC_158	Lim Heng Group	n/a
LC_153	Eng Chhayhout	n/a
LC_154	Chim Sideth	n/a
LC_157	Mrs. Va Pisal	n/a
LC_124	Ouknha Kok An	n/a
8	Kampong Cham Water Supply	n/a
LC_155	Mrs. Phoung Maly	n/a
LC_156	Mrs. Meas Channa	n/a
LC_159	Mrs Eng Saroun	n/a
LC_161	Mr. Por Pouch	n/a
LC_162	Mr. Sear Seangheng	n/a
LC_165	Mr. Moy Sophom	n/a
LC_166	Mr. Kang Senkosal	n/a
LC_121	Tho Mak Import Export and Construction Co.Ltd	n/a
LC_163	Mrs. Chea Savoeun	n/a
LC_167	Mrs. Srun Srey Oun	n/a
LC_168	Mr. Yomg Sambath	n/a
LC_169	Mr. Chrek Bo	n/a
LC_160	Mr. Tob Sophal	n/a
LC_170	PHNOM PENH SEZ Co., Ltd.	n/a
LC_001	Mekong Portable Co.Ltd	n/a
LC_171	Mr. Mean Phouen	n/a
LC_164	Mr. Sreav Chek	n/a
LC_171	Mr. Say Hong	n/a
LC_125	Ly Dara	n/a
LC_172	Mr. Khegn Tai Veng	n/a
LC_173	Mrs. Seang Nakea	n/a
LC_174	Mr. Pen Makaravuth	n/a
LC_022	Mr.Lang Hav	n/a
LC_004	Mr. Nget Sothy	Y
LC_130	Mrs. Chhuon Florina	n/a
LC_007	Khenh Tayveng	n/a
LC_131	Mr. Seng You	n/a
LC_006	Mrs.Chan Nary	y
LC_042	Mr. Hem March	n/a
LC_175	Mr. Liv Chung Chamnan	n/a
LC_040	Mr. Oum Chanto	n/a
LC_038	Mr. Lay Longdy	n/a
LC_176	Mr. Leng Simtheng	n/a
LC_009	Kin Sokhom	y
LC_177	Mr. Khorn Menghong	n/a
LC_182	Mr. Moeu Mean	n/a
LC_017	Mr. Meng Lai	n/a
LC_111	Mr. Chea Veng	n/a
LC_029	Mrs.Theng Dany	y
LC_010	Mr. Lak Mengly	y
LC_178	Mr. Pech Chhoeun	n/a
LC_180	Mr. Meng Songhak	n/a
LC_181	Mr. Nuon Sophanara	n/a
LC_064	Mrs. Ing Torn	n/a
LC_179	Mr. Tit Sarou	n/a
LC_053	Mrs. Lim Muy	n/a
LC_092	Mrs. Um Someth	n/a
LC_091	Mr. Khun Lam	n/a
LC_075	Mr. Chin Ratha	n/a
LC_034	Nun Reaksmey	n/a
LC_002	Prey Kob Construction Co.Ltd	n/a
LC_049	Mr. Eang Mab	n/a
LC_054	Mrs. Pom Chab	n/a
LC_051	Mr. Chhel Rithy	n/a
LC_047	Mr. Tong Sophea	n/a
LC_046	Mr. Sang Vuthy	n/a
LC_066	Vong Sophoan	n/a
LC_080	Vat Sovannary	n/a

LC_014	Rom Arun	n/a
LC_016	Horn Ngoun	n/a
LC_045	Borey Kamkior Co.Ltd.	n/a
LC_062	Mrs.An Mouy Kan	n/a
LC_027	Mrs.Heng Leaksey	y
LC_126	Sothevy Lungvek Apivorth Co.,Ltd.	n/a
LC_023	Mrs. Chea EngLay	n/a
LC_052	Meas Vanthoeun	n/a
LC_110	Pouk District Water Supply Co.,Ltd.	n/a
13	Modulkiri Public Water Supply	n/a
LC_128	Mr.Amnot Viriya	n/a
LC_123	Ket Construction Co.Ltd	n/a
LC_134	Chhorn Dalis	n/a

## ► Indicator 3 : Drawing of Raw Water Pumping Station

Code	Operator Name	Data
2	Siem Reap Water Supply Authority ( SRWSA )	n/a
3	Preah Sihanouk Water Supply	n/a
4	Kampot Water Supply	n/a
5	Pursat Water Supply	n/a
6	Battambang Water Supply	n/a
7	Kampong Thom Water Supply	n/a
9	Svay Rieng Water Supply	n/a
10	Stung Treng Water Supply	n/a
11	Stong Water Supply ( in K. Thom )	n/a
12	Tang Krasang Water Supply ( in K. Thom )	n/a
UL_001	ឃុនអភិវឌ្ឍន៍	n/a
UL_002	ឃុនអភិវឌ្ឍន៍	n/a
UL_003	ក្រុមហ៊ុនភូមិនិម័យ	n/a
UL_004	ក្រុមហ៊ុនភូមិនិម័យ	n/a
UL_005	ក្រុមហ៊ុនតាយណានស្រែកសិនអេជ័នៀ	n/a
UL_006	ក្រុមហ៊ុនតាយណានស្រែកសិនអេជ័នៀ	n/a
LC_003	Chhorn Dalis	n/a
LC_011	Heang Dara	n/a
LC_019	Mrs.Kry Kaovney	n/a
LC_008	Leng Khiev	n/a
LC_013	Mr. Srun Bunpor	n/a
LC_018	Mr.Nob Sinat	n/a
LC_015	Mr. Chea Kheng	n/a
LC_048	Mrs. Sek Kong	n/a
LC_012	Golden Bull Co., Ltd.	n/a
LC_030	Phae Dalin	n/a
LC_028	Tun Leakhena	n/a
LC_026	Ngov Chhorvorn	n/a
LC_033	Nun Reaksmey	n/a
LC_037	Mrs. Uy Sokha	n/a
LC_035	Mr. Srey Sokhom	n/a
LC_024	Mr. Seang Sengheab	n/a
LC_025	Mr. Chea Sron	n/a
LC_086	Mr. Eng Chayhout	n/a
LC_050	Mr. Soung Sarath	n/a
LC_057	Ann Ko Water Suply Co.Ltd	n/a
LC_065	Vong Reakmey	n/a
LC_039	Chhun Sarin	n/a
LC_068	Mr. Try Yousith	n/a
LC_061	Mr. Chun Vanthom	n/a
LC_093	Mrs. Em Sophy	n/a
LC_041	Mr. Lim Sreng	n/a
LC_122	LYP Group	n/a
LC_115	Sang Seab	n/a
LC_118	Seang Kimsreng	n/a
LC_067	Neang KiKemEng	n/a
LC_069	Sok Nay	n/a
LC_070	Chev Sony	n/a

LC_079	Boeung Loum	n/a
LC_113	Mrs. Chhuon Florina	n/a
LC_071	Mr. Ey Mao	n/a
LC_076	Mr. Tak Chan Kouy	n/a
LC_073	Mr. Dout Touch	n/a
LC_105	Mr. Ly Vongdy	n/a
1	Phnom Penh Water Supply Authority (PPWSA)	n/a
LC_100	Ly Heng	n/a
LC_099	Touch Sophoan	n/a
LC_104	Lan Chheav	n/a
LC_103	Khun Sophal	n/a
LC_089	Anco Water Supply	n/a
LC_116	Un Channary	n/a
LC_129	Mr.Amnot Viriya	n/a
LC_133	Mr. Chea Sarith	n/a
LC_036	Mr. Khorl Vibol	n/a
LC_020	Mrs. Ngin Vanna	n/a
LC_112	Touch Saren	n/a
LC_114	Kav San	n/a
LC_119	Tang Hokkhy	n/a
LC_117	Som Champey	n/a
LC_096	Sovanndara Pheanich Co.Ltd	n/a
LC_094	Vong Sambo	n/a
LC_135	Tai Seng Phalit Teuksaat Co., Ltd.	n/a
LC_132	Mr.Long Rin	n/a
LC_095	Mr. Thlang Sarath	n/a
LC_109	Mrs. Hoy Leakhena	n/a
LC_090	Sok Ngoun	n/a
LC_056	Tov Nearyphall	n/a
LC_083	Toeurn Sarert	n/a
LC_082	Chea Sokhorn	n/a
LC_072	Mrs. Rong Keang	n/a
LC_108	Mr. Poav Dort	n/a
LC_088	Mr.Touch Sithy	n/a
LC_085	Mrs. Heak DaraSamphors	n/a
LC_084	Mr. Men Ngouk	n/a
LC_078	Mrs. Chea Chhunlim	n/a
LC_081	Frong Nasy Co. Ltd	n/a
LC_107	Chea Sambou	n/a
LC_060	Ouknha Lim Heng	n/a
LC_031	Mak Thun	n/a
LC_032	Mak Thun	n/a
LC_102	Dy Pisey	n/a
LC_021	Mrs.Ngin Vanna	n/a
LC_077	Mr. Kho Bunheat	n/a
LC_005	Mrs. Chan Nary	n/a
LC_127	Mr. Sim Pheakdey	n/a
LC_106	Mr. Tho Sopheak	n/a
LC_101	Dy Pisey	n/a
LC_097	Nob Sida	n/a
UL_008	Vorn Bros	n/a
LC_058	Sear Ben	n/a
LC_055	Khun Appivath Co.Ltd	n/a
LC_074	Mr. Leang Davich	n/a
LC_137	Mean Rithy	n/a
LC_059	Eng Kang Development Coperation and Construction Co.Ltd	n/a
LC_120	Khoo Meng Huot Co.Ltd	n/a
LC_043	Mr. Cheak Kimly	n/a
LC_044	Mr. Sous Pouy	n/a
LC_138	Chheng Sokunthea	n/a
LC_140	Pen Savann	n/a
LC_141	Nei Chandoeun	n/a
LC_142	Heng Sivaro	n/a
LC_098	Nong Naret	n/a
LC_139	Mrs. Siev Sreymean	n/a
LC_143	SOMA FARM ( CAMBODIA )	n/a
LC_144	Uon Bunnat	n/a

LC_145	Sok Sophara	n/a
LC_063	Kampot Port Co., Ltd.	n/a
LC_146	Cheang Choun	n/a
LC_147	moy phallang	n/a
LC_148	Long Mab	n/a
LC_149	Moy Buheng	n/a
LC_150	Chea Sambo	n/a
UL_009	Seav Hout	n/a
LC_151	Ou Sarim	n/a
LC_152	Phon KimLong	n/a
LC_158	Lim Heng Group	n/a
LC_153	Eng Chhayhout	n/a
LC_154	Chim Sideth	n/a
LC_157	Mrs. Va Pisal	n/a
LC_124	Ouknha Kok An	n/a
8	Kampong Cham Water Supply	n/a
LC_155	Mrs. Phoung Maly	n/a
LC_156	Mrs. Meas Channa	n/a
LC_159	Mrs Eng Saroun	n/a
LC_161	Mr. Por Pouch	n/a
LC_162	Mr. Sear Seangheng	n/a
LC_165	Mr. Moy Sophom	n/a
LC_166	Mr. Kang Senkosal	n/a
LC_121	Tho Mak Import Export and Construction Co.Ltd	n/a
LC_163	Mrs. Chea Savoeun	n/a
LC_167	Mrs. Srun Srey Oun	n/a
LC_168	Mr. Yornng Sambath	n/a
LC_169	Mr. Chrek Bo	n/a
LC_160	Mr. Tob Sophal	n/a
LC_170	PHNOM PENH SEZ Co., Ltd.	n/a
LC_001	Mekong Portable Co.Ltd	n/a
LC_171	Mr. Mean Phouen	n/a
LC_164	Mr. Sreav Chek	n/a
LC_171	Mr. Say Hong	n/a
LC_125	Ly Dara	n/a
LC_172	Mr. Khegn Tai Veng	n/a
LC_173	Mrs. Seang Nakea	n/a
LC_174	Mr. Pen Makaravuth	n/a
LC_022	Mr.Lang Hav	n/a
LC_004	Mr. Nget Sothy	n/a
LC_130	Mrs. Chhuon Florina	n/a
LC_007	Khenh Tayveng	n/a
LC_131	Mr. Seng You	n/a
LC_006	Mrs.Chan Nary	n/a
LC_042	Mr. Hem March	n/a
LC_175	Mr. Liv Chung Chamnan	n/a
LC_040	Mr. Oum Chanto	n/a
LC_038	Mr. Lay Longdy	n/a
LC_176	Mr. Leng Simtheng	n/a
LC_009	Kin Sokhom	n/a
LC_177	Mr. Khorn Menghong	n/a
LC_182	Mr. Moeu Mean	n/a
LC_017	Mr. Meng Lai	n/a
LC_111	Mr. Chea Veng	n/a
LC_029	Mrs.Theng Dany	n/a
LC_010	Mr. Lak Mengly	n/a
LC_178	Mr. Pech Chhoeun	n/a
LC_180	Mr. Meng Songhak	n/a
LC_181	Mr. Nuon Sophanara	n/a
LC_064	Mrs. Ing Torn	n/a
LC_179	Mr. Tit Sarou	n/a
LC_053	Mrs. Lim Muy	n/a
LC_092	Mrs. Um Someth	n/a
LC_091	Mr. Khun Lam	n/a
LC_075	Mr. Chin Ratha	n/a
LC_034	Nun Reaksmeay	n/a

LC_002	Prey Kob Construction Co.Ltd	n/a
LC_049	Mr. Eang Mab	n/a
LC_054	Mrs. Pom Chab	n/a
LC_051	Mr. Chhel Rithy	n/a
LC_047	Mr. Tong Sophea	n/a
LC_046	Mr. Sang Vuthy	n/a
LC_066	Vong Sophoan	n/a
LC_080	Vat Sovannary	n/a
LC_014	Rom Arun	n/a
LC_016	Horn Ngoun	n/a
LC_045	Borey Kamkior Co.Ltd.	n/a
LC_062	Mrs.An Mouy Kan	n/a
LC_027	Mrs.Heng Leaksey	n/a
LC_126	Sothevy Lungvek Apivorth Co.,Ltd.	n/a
LC_023	Mrs. Chea EngLay	n/a
LC_052	Meas Vanthoeun	n/a
LC_110	Pouk District Water Supply Co.,Ltd.	n/a
13	Modulkiri Public Water Supply	n/a
LC_128	Mr.Amnot Viriya	n/a
LC_123	Ket Construction Co.Ltd	n/a
LC_134	Chhorn Dalis	n/a

► Indicator 4 : Drawing of Water Transmission Network

Code	Operator Name	Data
2	Siem Reap Water Supply Authority ( SRWSA )	n/a
3	Preah Sihanouk Water Supply	n/a
4	Kampot Water Supply	n/a
5	Pursat Water Supply	n/a
6	Battambang Water Supply	n/a
7	Kampong Thom Water Supply	n/a
9	Svay Rieng Water Supply	n/a
10	Stung Treng Water Supply	n/a
11	Stong Water Supply ( in K. Thom )	n/a
12	Tang Krasang Water Supply ( in K. Thom )	n/a
UL_001	ឃុំអភិវឌ្ឍន៍	n/a
UL_002	ឃុំអភិវឌ្ឍន៍	n/a
UL_003	ក្រុមហ៊ុនភូមិនិមិត	n/a
UL_004	ក្រុមហ៊ុនភូមិនិមិត	n/a
UL_005	ក្រុមហ៊ុនតាយណាខនស្រ្តាក់សិនអេជីនៀ	n/a
UL_006	ក្រុមហ៊ុនតាយណាខនស្រ្តាក់សិនអេជីនៀ	n/a
LC_003	Chhorn Dalis	n/a
LC_011	Heang Dara	n/a
LC_019	Mrs.Kry Kaovney	n/a
LC_008	Leng Khiev	n/a
LC_013	Mr. Srun Bunpor	n/a
LC_018	Mr.Nob Sinat	n/a
LC_015	Mr. Chea Kheng	n/a
LC_048	Mrs. Sek Kong	n/a
LC_012	Golden Bull Co., Ltd.	n/a
LC_030	Phae Dalin	n/a
LC_028	Tun Leakhena	n/a
LC_026	Ngov Chhorvom	n/a
LC_033	Nun Reaksmey	n/a
LC_037	Mrs. Uy Sokha	n/a
LC_035	Mr. Srey Sokhom	n/a
LC_024	Mr. Seang Sengheab	n/a
LC_025	Mr. Chea Sron	n/a
LC_086	Mr. Eng Chayhout	n/a
LC_050	Mr. Soung Sarath	n/a
LC_057	Ann Ko Water Supply Co.Ltd	n/a
LC_065	Vong Reakmey	n/a
LC_039	Chhun Sarin	n/a
LC_068	Mr. Try Yousith	n/a
LC_061	Mr. Chun Vanthom	n/a
LC_093	Mrs. Em Sophy	n/a



LC_041	Mr. Lim Sreng	n/a
LC_122	LYP Group	n/a
LC_115	Sang Seab	n/a
LC_118	Seang Kimsreng	n/a
LC_067	Neang KiKemEng	n/a
LC_069	Sok Nay	n/a
LC_070	Chev Sony	n/a
LC_079	Boeung Loum	n/a
LC_113	Mrs. Chhuon Florina	n/a
LC_071	Mr. Ey Mao	n/a
LC_076	Mr. Tak Chan Kouy	n/a
LC_073	Mr. Dout Touch	n/a
LC_105	Mr. Ly Vongdy	n/a
1	Phnom Penh Water Supply Authority (PPWSA)	n/a
LC_100	Ly Heng	n/a
LC_099	Touch Sophoan	n/a
LC_104	Lan Chheav	n/a
LC_103	Khun Sophal	n/a
LC_089	Anco Water Supply	n/a
LC_116	Un Channary	n/a
LC_129	Mr.Amnot Viriya	n/a
LC_133	Mr. Chea Sarith	n/a
LC_036	Mr. Khorl Vibol	n/a
LC_020	Mrs. Ngin Vanna	n/a
LC_112	Touch Saren	n/a
LC_114	Kav San	n/a
LC_119	Tang Hokkhy	n/a
LC_117	Sorn Champey	n/a
LC_096	Sovannndara Pheanich Co.Ltd	n/a
LC_094	Vong Sambo	n/a
LC_135	Tai Seng Phalit Teuksaat Co., Ltd.	n/a
LC_132	Mr.Long Rin	n/a
LC_095	Mr. Thlang Sarath	n/a
LC_109	Mrs. Hoy Leakhena	n/a
LC_090	Sok Ngoun	n/a
LC_056	Tov Nearyphall	n/a
LC_083	Toeum Sarert	n/a
LC_082	Chea Sokhorn	n/a
LC_072	Mrs. Rong Keang	n/a
LC_108	Mr. Poav Dort	n/a
LC_088	Mr.Touch Sithy	n/a
LC_085	Mrs. Heak DaraSamphors	n/a
LC_084	Mr. Men Ngouk	n/a
LC_078	Mrs. Chea Chhunlim	n/a
LC_081	Frong Nasy Co. Ltd	n/a
LC_107	Chea Sambou	n/a
LC_060	Ouknha Lim Heng	n/a
LC_031	Mak Thun	n/a
LC_032	Mak Thun	n/a
LC_102	Dy Pisey	n/a
LC_021	Mrs.Ngin Vanna	n/a
LC_077	Mr. Kho Bunheat	n/a
LC_005	Mrs. Chan Nary	n/a
LC_127	Mr. Sim Pheakdey	n/a
LC_106	Mr. Tho Sopheak	n/a
LC_101	Dy Pisey	n/a
LC_097	Nob Sida	n/a
UL_008	Vorn Bros	n/a
LC_058	Sear Ben	n/a
LC_055	Khun Appivath Co.Ltd	n/a
LC_074	Mr. Leang Davich	n/a
LC_137	Mean Rithy	n/a
LC_059	Eng Kang Development Coperation and Construction Co.Ltd	n/a
LC_120	Khoo Meng Huot Co.Ltd	n/a
LC_043	Mr. Cheak Kimly	n/a
LC_044	Mr. Sous Pouy	n/a

LC_138	Chheng Sokunthea	n/a
LC_140	Pen Savann	n/a
LC_141	Nei Chandoeun	n/a
LC_142	Heng Sivaro	n/a
LC_098	Nong Naret	n/a
LC_139	Mrs. Siev Sreymean	n/a
LC_143	SOMA FARM ( CAMBODIA )	n/a
LC_144	Uon Bunnat	n/a
LC_145	Sok Sophara	n/a
LC_063	Kampot Port Co., Ltd.	n/a
LC_146	Cheang Choun	n/a
LC_147	moy phallang	n/a
LC_148	Long Mab	n/a
LC_149	Moy Buheng	n/a
LC_150	Chea Sambo	n/a
UL_009	Seav Hout	n/a
LC_151	Ou Sarim	n/a
LC_152	Phon KimLong	n/a
LC_158	Lim Heng Group	n/a
LC_153	Eng Chhayhout	n/a
LC_154	Chim Sideth	n/a
LC_157	Mrs. Va Pisal	n/a
LC_124	Ouknha Kok An	n/a
8	Kampong Cham Water Supply	n/a
LC_155	Mrs. Phoung Maly	n/a
LC_156	Mrs. Meas Channa	n/a
LC_159	Mrs Eng Saroun	n/a
LC_161	Mr. Por Pouch	n/a
LC_162	Mr. Sear Seangheng	n/a
LC_165	Mr. Moy Sophorn	n/a
LC_166	Mr. Kang Senkosal	n/a
LC_121	Tho Mak Import Export and Construction Co.Ltd	n/a
LC_163	Mrs. Chea Savoeun	n/a
LC_167	Mrs. Srun Srey Oun	n/a
LC_168	Mr. Yong Sambath	n/a
LC_169	Mr. Chrek Bo	n/a
LC_160	Mr. Tob Sophal	n/a
LC_170	PHNOM PENH SEZ Co., Ltd.	n/a
LC_001	Mekong Portable Co.Ltd	n/a
LC_171	Mr. Mean Phouen	n/a
LC_164	Mr. Sreav Chek	n/a
LC_171	Mr. Say Hong	n/a
LC_125	Ly Dara	n/a
LC_172	Mr. Khegn Tai Veng	n/a
LC_173	Mrs. Seang Nakea	n/a
LC_174	Mr. Pen Makaravuth	n/a
LC_022	Mr. Lang Hav	n/a
LC_004	Mr. Nget Sothy	n/a
LC_130	Mrs. Chhuon Florina	n/a
LC_007	Khenh Tayveng	n/a
LC_131	Mr. Seng You	n/a
LC_006	Mrs.Chan Nary	n/a
LC_042	Mr. Hem March	n/a
LC_175	Mr. Liv Chung Chamnan	n/a
LC_040	Mr. Oum Chanto	n/a
LC_038	Mr. Lay Longdy	n/a
LC_176	Mr. Leng Simtheng	n/a
LC_009	Kin Sokhom	n/a
LC_177	Mr. Khorn Menghong	n/a
LC_182	Mr. Moeu Mean	n/a
LC_017	Mr. Meng Lai	n/a
LC_111	Mr. Chea Veng	n/a
LC_029	Mrs.Theng Dany	n/a
LC_010	Mr. Lak Mengly	n/a
LC_178	Mr. Pech Chhoeun	n/a
LC_180	Mr. Meng Songhak	n/a
LC_181	Mr. Nuon Sophanara	n/a

LC_064	Mrs. Ing Torn	n/a
LC_179	Mr. Tit Sarou	n/a
LC_053	Mrs. Lim Muy	n/a
LC_092	Mrs. Um Someth	n/a
LC_091	Mr. Khun Lam	n/a
LC_075	Mr. Chin Ratha	n/a
LC_034	Nun Reaksmey	n/a
LC_002	Prey Kob Construction Co.Ltd	n/a
LC_049	Mr. Eang Mab	n/a
LC_054	Mrs. Pom Chab	n/a
LC_051	Mr. Chhel Rithy	n/a
LC_047	Mr. Tong Sophea	n/a
LC_046	Mr. Sang Vuthy	n/a
LC_066	Vong Sophoan	n/a
LC_080	Vat Sovannary	n/a
LC_014	Rom Arun	n/a
LC_016	Horn Ngoun	n/a
LC_045	Borey Kamkior Co.Ltd.	n/a
LC_062	Mrs.An Mouy Kan	n/a
LC_027	Mrs.Heng Leaksey	n/a
LC_126	Sothevy Lungvek Apivorth Co.,Ltd.	n/a
LC_023	Mrs. Chea EngLay	n/a
LC_052	Meas Vanthoeun	n/a
LC_110	Pouk District Water Supply Co.,Ltd.	n/a
13	Modulkiri Public Water Supply	n/a
LC_128	Mr.Amnot Viriya	n/a
LC_123	Ket Construction Co.Ltd	n/a
LC_134	Chhom Dalis	n/a

► Indicator 6 : Drawing of Water Treatment Plant

Code	Operator Name	Data
2	Siem Reap Water Supply Authority ( SRWSA )	n/a
3	Preah Sihanouk Water Supply	n/a
4	Kampot Water Supply	n/a
5	Pursat Water Supply	n/a
6	Battambang Water Supply	n/a
7	Kampong Thom Water Supply	n/a
9	Svay Rieng Water Supply	n/a
10	Stung Treng Water Supply	n/a
11	Stong Water Supply ( in K. Thom )	n/a
12	Tang Krasang Water Supply ( in K. Thom )	n/a
UL_001	ឃុំអភិវឌ្ឍន៍	n/a
UL_002	ឃុំអភិវឌ្ឍន៍	n/a
UL_003	ក្រុមហ៊ុនភូមិនិមិត	n/a
UL_004	ក្រុមហ៊ុនភូមិនិមិត	n/a
UL_005	ក្រុមហ៊ុនធាយណាខនស្រុកស័នអេជ័នៀ	n/a
UL_006	ក្រុមហ៊ុនធាយណាខនស្រុកស័នអេជ័នៀ	n/a
LC_003	Chhom Dalis	n/a
LC_011	Heang Dara	n/a
LC_019	Mrs.Kry Kaovney	n/a
LC_008	Leng Khiev	n/a
LC_013	Mr. Srun Bunpor	n/a
LC_018	Mr.Nob Sinat	n/a
LC_015	Mr. Chea Kheng	n/a
LC_048	Mrs. Sek Kong	n/a
LC_012	Golden Bull Co., Ltd.	n/a
LC_030	Phae Dalin	n/a
LC_028	Tun Leakhena	n/a
LC_026	Ngov Chhorvom	n/a
LC_033	Nun Reaksmey	n/a
LC_037	Mrs. Uy Sokha	n/a
LC_035	Mr. Srey Sokhom	n/a
LC_024	Mr. Seang Sengheab	n/a
LC_025	Mr. Chea Sron	n/a

LC_086	Mr. Eng Chayhout	n/a
LC_050	Mr. Soung Sarath	n/a
LC_057	Ann Ko Water Supply Co.Ltd	n/a
LC_065	Vong Reakmey	n/a
LC_039	Chhun Sarin	n/a
LC_068	Mr. Try Yousith	n/a
LC_061	Mr. Chun Vanthom	n/a
LC_093	Mrs. Em Sophy	n/a
LC_041	Mr. Lim Sreng	n/a
LC_122	LYP Group	n/a
LC_115	Sang Seab	n/a
LC_118	Seang Kimsreng	n/a
LC_067	Neang KiKemEng	n/a
LC_069	Sok Nay	n/a
LC_070	Chev Sony	n/a
LC_079	Boeung Loum	n/a
LC_113	Mrs. Chhuon Florina	n/a
LC_071	Mr. Ey Mao	n/a
LC_076	Mr. Tak Chan Kouy	n/a
LC_073	Mr. Dout Touch	n/a
LC_105	Mr. Ly Vongdy	n/a
1	Phnom Penh Water Supply Authority (PPWSA)	n/a
LC_100	Ly Heng	n/a
LC_099	Touch Sophoan	n/a
LC_104	Lan Chheav	n/a
LC_103	Khun Sophal	n/a
LC_089	Anco Water Supply	n/a
LC_116	Un Channary	n/a
LC_129	Mr.Amnot Viriya	n/a
LC_133	Mr. Chea Sarith	n/a
LC_036	Mr. Khorl Vibol	n/a
LC_020	Mrs. Ngin Vanna	n/a
LC_112	Touch Saren	n/a
LC_114	Kav San	n/a
LC_119	Tang Hokkhy	n/a
LC_117	Sorn Champey	n/a
LC_096	Sovandara Pheanich Co.Ltd	n/a
LC_094	Vong Sambo	n/a
LC_135	Tai Seng Phalit Teuksaat Co., Ltd.	n/a
LC_132	Mr.Long Rin	n/a
LC_095	Mr. Thlang Sarath	n/a
LC_109	Mrs. Hoy Leakhena	n/a
LC_090	Sok Ngoun	n/a
LC_056	Tov Nearyphall	n/a
LC_083	Toeum Sarent	n/a
LC_082	Chea Sokhorn	n/a
LC_072	Mrs. Rong Keang	n/a
LC_108	Mr. Poav Dort	n/a
LC_088	Mr.Touch Sithy	n/a
LC_085	Mrs. Heak DaraSamphors	n/a
LC_084	Mr. Men Ngouk	n/a
LC_078	Mrs. Chea Chhunlim	n/a
LC_081	Frong Nasy Co. Ltd	n/a
LC_107	Chea Sambou	n/a
LC_060	Ouknha Lim Heng	n/a
LC_031	Mak Thun	n/a
LC_032	Mak Thun	n/a
LC_102	Dy Pisey	n/a
LC_021	Mrs.Ngin Vanna	n/a
LC_077	Mr. Kho Bunheat	n/a
LC_005	Mrs. Chan Nary	n/a
LC_127	Mr. Sim Pheakdey	n/a
LC_106	Mr. Tho Sopheak	n/a
LC_101	Dy Pisey	n/a
LC_097	Nob Sida	n/a
UL_008	Vorn Bros	n/a
LC_058	Sear Ben	n/a

LC_055	Khun Appivath Co.Ltd	n/a
LC_074	Mr. Leang Davich	n/a
LC_137	Mean Rithy	n/a
LC_059	Eng Kang Development Coperation and Construction Co.Ltd	n/a
LC_120	Khoo Meng Huot Co.Ltd	n/a
LC_043	Mr. Cheak Kimly	n/a
LC_044	Mr. Sous Pouy	n/a
LC_138	Chheng Sokunthea	n/a
LC_140	Pen Savann	n/a
LC_141	Nei Chandoeun	n/a
LC_142	Heng Sivaro	n/a
LC_098	Nong Naret	n/a
LC_139	Mrs. Siev Sreymean	n/a
LC_143	SOMA FARM ( CAMBODIA )	n/a
LC_144	Uon Bunnat	n/a
LC_145	Sok Sophara	n/a
LC_063	Kampot Port Co., Ltd.	n/a
LC_146	Cheang Choun	n/a
LC_147	moy phallang	n/a
LC_148	Long Mab	n/a
LC_149	Moy Buheng	n/a
LC_150	Chea Sambo	n/a
UL_009	Seav Hout	n/a
LC_151	Ou Sarim	n/a
LC_152	Phon KimLong	n/a
LC_158	Lim Heng Group	n/a
LC_153	Eng Chhayhout	n/a
LC_154	Chim Sideth	n/a
LC_157	Mrs. Va Pisal	n/a
LC_124	Ouknha Kok An	n/a
8	Kampong Cham Water Supply	n/a
LC_155	Mrs. Phoung Maly	n/a
LC_156	Mrs. Meas Channa	n/a
LC_159	Mrs Eng Saroun	n/a
LC_161	Mr. Por Pouch	n/a
LC_162	Mr. Sear Seangheng	n/a
LC_165	Mr. Moy Sophon	n/a
LC_166	Mr. Kang Senkosal	n/a
LC_121	Tho Mak Import Export and Construction Co.Ltd	n/a
LC_163	Mrs. Chea Savoeun	n/a
LC_167	Mrs. Srun Srey Oun	n/a
LC_168	Mr. Yornng Sambath	n/a
LC_169	Mr. Chrek Bo	n/a
LC_160	Mr. Tob Sophal	n/a
LC_170	PHNOM PENH SEZ Co., Ltd.	n/a
LC_001	Mekong Portable Co.Ltd	n/a
LC_171	Mr. Mean Phouen	n/a
LC_164	Mr. Sreav Chek	n/a
LC_171	Mr. Say Hong	n/a
LC_125	Ly Dara	n/a
LC_172	Mr. Khegn Tai Veng	n/a
LC_173	Mrs. Seang Nakea	n/a
LC_174	Mr. Pen Makaravuth	n/a
LC_022	Mr.Lang Hav	n/a
LC_004	Mr. Nget Sothy	n/a
LC_130	Mrs. Chhuon Florina	n/a
LC_007	Khenh Tayveng	n/a
LC_131	Mr. Seng You	n/a
LC_006	Mrs.Chan Nary	n/a
LC_042	Mr. Hem March	n/a
LC_175	Mr. Liv Chung Chamnan	n/a
LC_040	Mr. Oum Chanto	n/a
LC_038	Mr. Lay Longdy	n/a
LC_176	Mr. Leng Simtheng	n/a
LC_009	Kin Sokhom	n/a
LC_177	Mr. Khorn Menghong	n/a

LC_182	Mr. Moeu Mean	n/a
LC_017	Mr. Meng Lai	n/a
LC_111	Mr. Chea Veng	n/a
LC_029	Mrs.Theng Dany	n/a
LC_010	Mr. Lak Mengly	n/a
LC_178	Mr. Pech Chhoeun	n/a
LC_180	Mr. Meng Songhak	n/a
LC_181	Mr. Nuon Sophanara	n/a
LC_064	Mrs. Ing Tom	n/a
LC_179	Mr. Tit Sarou	n/a
LC_053	Mrs. Lim Muy	n/a
LC_092	Mrs. Um Someth	n/a
LC_091	Mr. Khun Lam	n/a
LC_075	Mr. Chin Ratha	n/a
LC_034	Nun Reaksmeay	n/a
LC_002	Prey Kob Construction Co.Ltd	n/a
LC_049	Mr. Eang Mab	n/a
LC_054	Mrs. Pom Chab	n/a
LC_051	Mr. Chhel Rithy	n/a
LC_047	Mr. Tong Sophea	n/a
LC_046	Mr. Sang Vuthy	n/a
LC_066	Vong Sophoan	n/a
LC_080	Vat Sovannary	n/a
LC_014	Rom Arun	n/a
LC_016	Horn Ngoun	n/a
LC_045	Borey Kamkior Co.Ltd.	n/a
LC_062	Mrs.An Mouy Kan	n/a
LC_027	Mrs.Heng Leaksey	n/a
LC_126	Sothevy Lungvek Apivorth Co.,Ltd.	n/a
LC_023	Mrs. Chea EngLay	n/a
LC_052	Meas Vanthoeun	n/a
LC_110	Pouk District Water Supply Co.,Ltd.	n/a
13	Modulhiri Public Water Supply	n/a
LC_128	Mr.Amnot Viriya	n/a
LC_123	Ket Construction Co.Ltd	n/a
LC_134	Chhorn Dalis	n/a

► Indicator 7 : Production capacity

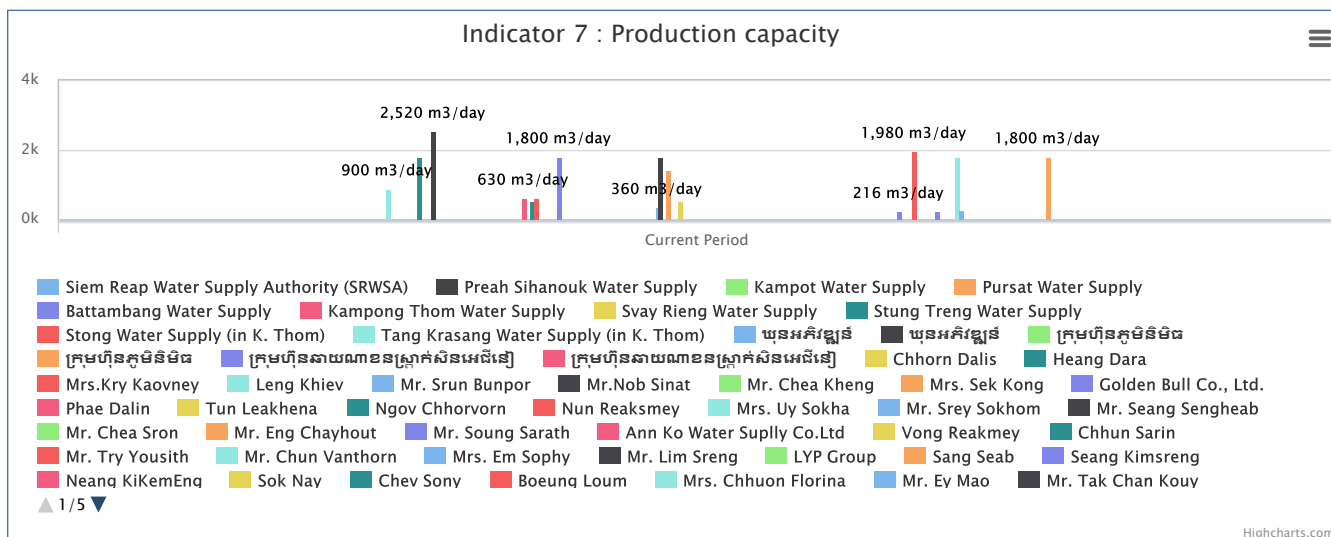
Code	Operator Name	Data
2	Siem Reap Water Supply Authority ( SRWSA )	n/a
3	Preah Sihanouk Water Supply	n/a
4	Kampot Water Supply	n/a
5	Pursat Water Supply	n/a
6	Battambang Water Supply	n/a
7	Kampong Thom Water Supply	n/a
9	Svay Rieng Water Supply	n/a
10	Stung Treng Water Supply	n/a
11	Stong Water Supply ( in K. Thom )	n/a
12	Tang Krasang Water Supply ( in K. Thom )	n/a
UL_001	យុនអភិវឌ្ឍន៍	n/a
UL_002	យុនអភិវឌ្ឍន៍	n/a
UL_003	ក្រុមហ៊ុនភូមិនិមិត	n/a
UL_004	ក្រុមហ៊ុនភូមិនិមិត	n/a
UL_005	ក្រុមហ៊ុនធាយណាខនស្រ្តាក់សិនអេជិនៀ	n/a
UL_006	ក្រុមហ៊ុនធាយណាខនស្រ្តាក់សិនអេជិនៀ	n/a
LC_003	Chhorn Dalis	n/a
LC_011	Heang Dara	n/a
LC_019	Mrs.Kry Kaovney	n/a
LC_008	Leng Khiev	900
LC_013	Mr. Srun Bunpor	n/a
LC_018	Mr.Nob Sinat	n/a
LC_015	Mr. Chea Kheng	n/a
LC_048	Mrs. Sek Kong	n/a
LC_012	Golden Bull Co., Ltd.	n/a
LC_030	Phae Dalin	n/a

LC_028	Tun Leakhena	n/a
LC_026	Ngov Chhorvorn	1,800
LC_033	Nun Reaksmey	n/a
LC_037	Mrs. Uy Sokha	n/a
LC_035	Mr. Srey Sokhom	n/a
LC_024	Mr. Seang Sengheab	2,520
LC_025	Mr. Chea Sron	n/a
LC_086	Mr. Eng Chayhout	n/a
LC_050	Mr. Soung Sarath	n/a
LC_057	Ann Ko Water Supply Co.Ltd	n/a
LC_065	Vong Reakmey	n/a
LC_039	Chhun Sarin	n/a
LC_068	Mr. Try Yousith	n/a
LC_061	Mr. Chun Vanthorn	n/a
LC_093	Mrs. Em Sophy	n/a
LC_041	Mr. Lim Sreng	n/a
LC_122	LYP Group	n/a
LC_115	Sang Seab	n/a
LC_118	Seang Kimsreng	n/a
LC_067	Neang KiKemEng	n/a
LC_069	Sok Nay	n/a
LC_070	Chev Sony	n/a
LC_079	Boeung Loum	n/a
LC_113	Mrs. Chhuon Florina	n/a
LC_071	Mr. Ey Mao	n/a
LC_076	Mr. Tak Chan Kouy	n/a
LC_073	Mr. Dout Touch	n/a
LC_105	Mr. Ly Vongdy	n/a
1	Phnom Penh Water Supply Authority ( PPWSA )	n/a
LC_100	Ly Heng	630
LC_099	Touch Sophoan	n/a
LC_104	Lan Chheav	540
LC_103	Khun Sophal	630
LC_089	Anco Water Supply	n/a
LC_116	Un Channary	n/a
LC_129	Mr.Amnot Viriya	n/a
LC_133	Mr. Chea Sarith	n/a
LC_036	Mr. Khorl Vibol	n/a
LC_020	Mrs. Ngin Vanna	1,800
LC_112	Touch Saren	n/a
LC_114	Kav San	n/a
LC_119	Tang Hokkhy	n/a
LC_117	Som Champey	n/a
LC_096	Sovannara Pheanich Co.Ltd	n/a
LC_094	Vong Sambo	n/a
LC_135	Tai Seng Phalit Teuksaat Co., Ltd.	n/a
LC_132	Mr.Long Rin	n/a
LC_095	Mr. Thlang Sarath	n/a
LC_109	Mrs. Hoy Leakhena	n/a
LC_090	Sok Ngoun	n/a
LC_056	Tov Nearyphall	n/a
LC_083	Toeum Sarett	n/a
LC_082	Chea Sokhom	n/a
LC_072	Mrs. Rong Keang	n/a
LC_108	Mr. Poav Dort	n/a
LC_088	Mr.Touch Sithy	n/a
LC_085	Mrs. Heak DaraSamphors	n/a
LC_084	Mr. Men Ngouk	n/a
LC_078	Mrs. Chea Chhunlim	n/a
LC_081	Frong Nasy Co. Ltd	n/a
LC_107	Chea Sambou	n/a
LC_060	Ouknha Lim Heng	n/a
LC_031	Mak Thun	n/a
LC_032	Mak Thun	n/a
LC_102	Dy Pisey	360
LC_021	Mrs.Ngin Vanna	1,800

LC_077	Mr. Kho Bunheat	n/a
LC_005	Mrs. Chan Nary	1,440
LC_127	Mr. Sim Pheakdey	n/a
LC_106	Mr. Tho Sopheak	n/a
LC_101	Dy Pisey	540
LC_097	Nob Sida	n/a
UL_008	Vorn Bros	n/a
LC_058	Sear Ben	n/a
LC_055	Khun Appivath Co.Ltd	n/a
LC_074	Mr. Leang Davich	n/a
LC_137	Mean Rithy	n/a
LC_059	Eng Kang Development Coperation and Construction Co.Ltd	n/a
LC_120	Khoo Meng Huot Co.Ltd	n/a
LC_043	Mr. Cheak Kimly	n/a
LC_044	Mr. Sous Pouy	n/a
LC_138	Chheng Sokunthea	n/a
LC_140	Pen Savann	n/a
LC_141	Nei Chandoeun	n/a
LC_142	Heng Sivaro	n/a
LC_098	Nong Naret	n/a
LC_139	Mrs. Siev Sreymean	n/a
LC_143	SOMA FARM ( CAMBODIA )	n/a
LC_144	Uon Bunnat	n/a
LC_145	Sok Sophara	n/a
LC_063	Kampot Port Co., Ltd.	n/a
LC_146	Cheang Choun	n/a
LC_147	moy phallang	n/a
LC_148	Long Mab	n/a
LC_149	Moy Buheng	n/a
LC_150	Chea Sambo	n/a
UL_009	Seav Hout	n/a
LC_151	Ou Sarim	n/a
LC_152	Phon KimLong	n/a
LC_158	Lim Heng Group	n/a
LC_153	Eng Chhayhout	n/a
LC_154	Chim Sideth	n/a
LC_157	Mrs. Va Pisal	n/a
LC_124	Ouknha Kok An	n/a
8	Kampong Cham Water Supply	n/a
LC_155	Mrs. Phoung Maly	n/a
LC_156	Mrs. Meas Channa	n/a
LC_159	Mrs Eng Saroun	n/a
LC_161	Mr. Por Pouch	n/a
LC_162	Mr. Sear Seangheng	n/a
LC_165	Mr. Moy Sophom	n/a
LC_166	Mr. Kang Senkosal	n/a
LC_121	Tho Mak Import Export and Construction Co.Ltd	n/a
LC_163	Mrs. Chea Savoeun	n/a
LC_167	Mrs. Srun Srey Oun	n/a
LC_168	Mr. Yong Sambath	n/a
LC_169	Mr. Chrek Bo	n/a
LC_160	Mr. Tob Sophal	n/a
LC_170	PHNOM PENH SEZ Co., Ltd.	n/a
LC_001	Mekong Portable Co.Ltd	n/a
LC_171	Mr. Mean Phouen	n/a
LC_164	Mr. Sreav Chek	n/a
LC_171	Mr. Say Hong	n/a
LC_125	Ly Dara	n/a
LC_172	Mr. Khegn Tai Veng	n/a
LC_173	Mrs. Seang Nakea	n/a
LC_174	Mr. Pen Makaravuth	n/a
LC_022	Mr.Lang Hav	n/a
LC_004	Mr. Nget Sothy	216
LC_130	Mrs. Chhuon Florina	n/a
LC_007	Khenh Tayveng	n/a
LC_131	Mr. Seng You	n/a
LC_006	Mrs.Chan Nary	1,980



LC_042	Mr. Hem March	n/a
LC_175	Mr. Liv Chung Chamnan	n/a
LC_040	Mr. Oum Chanto	n/a
LC_038	Mr. Lay Longdy	n/a
LC_176	Mr. Leng Simtheng	n/a
LC_009	Kin Sokhom	216
LC_177	Mr. Khorn Menghong	n/a
LC_182	Mr. Moeu Mean	n/a
LC_017	Mr. Meng Lai	n/a
LC_111	Mr. Chea Veng	n/a
LC_029	Mrs.Theng Dany	1,800
LC_010	Mr. Lak Mengly	270
LC_178	Mr. Pech Chhoeun	n/a
LC_180	Mr. Meng Songhak	n/a
LC_181	Mr. Nuon Sophanara	n/a
LC_064	Mrs. Ing Torn	n/a
LC_179	Mr. Tit Sarou	n/a
LC_053	Mrs. Lim Muy	n/a
LC_092	Mrs. Um Someth	n/a
LC_091	Mr. Khun Lam	n/a
LC_075	Mr. Chin Ratha	n/a
LC_034	Nun Reaksmey	n/a
LC_002	Prey Kob Construction Co.Ltd	n/a
LC_049	Mr. Eang Mab	n/a
LC_054	Mrs. Pom Chab	n/a
LC_051	Mr. Chhel Rithy	n/a
LC_047	Mr. Tong Sophea	n/a
LC_046	Mr. Sang Vuthy	n/a
LC_066	Vong Sophoan	n/a
LC_080	Vat Sovannary	n/a
LC_014	Rom Arun	n/a
LC_016	Horn Ngoun	n/a
LC_045	Borey Kamkior Co.Ltd.	n/a
LC_062	Mrs.An Mouy Kan	n/a
LC_027	Mrs.Heng Leaksey	1,800
LC_126	Sothevy Lungvek Apivorth Co.,Ltd.	n/a
LC_023	Mrs. Chea EngLay	n/a
LC_052	Meas Vanthoeun	n/a
LC_110	Pouk District Water Supply Co.,Ltd.	n/a
13	Modulkiri Public Water Supply	n/a
LC_128	Mr.Amnot Viriya	n/a
LC_123	Ket Construction Co.Ltd	n/a
LC_134	Chhorn Dalis	n/a



Indicator 17 : Storage capacity

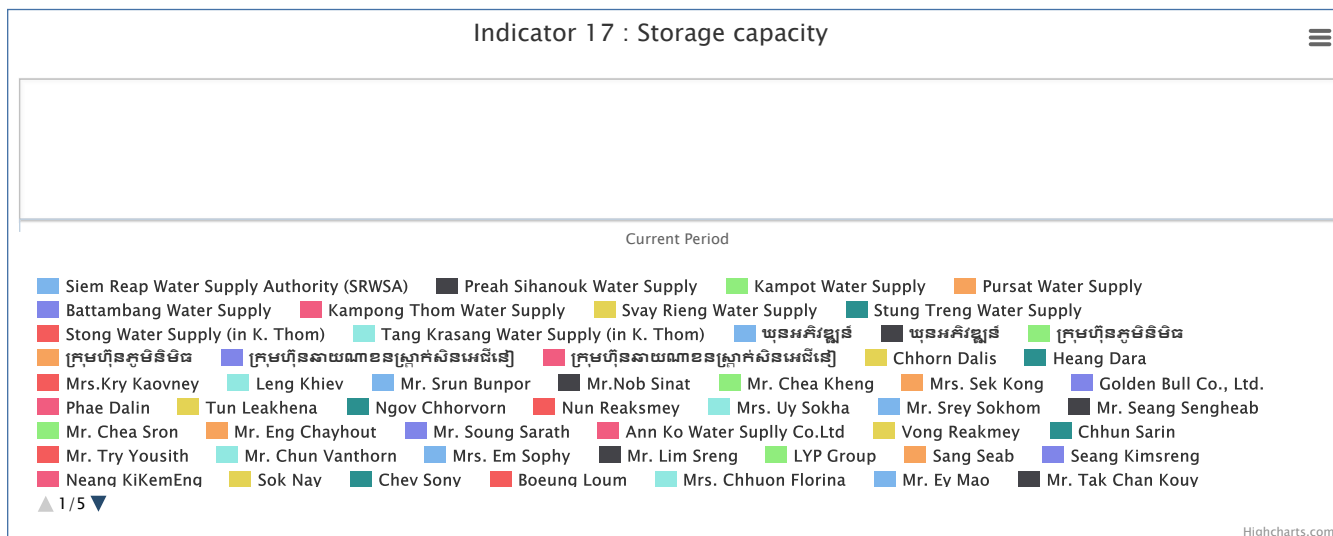
Code	Operator Name	Data
------	---------------	------

2	Siem Reap Water Supply Authority (SRWSA)	n/a
3	Preah Sihanouk Water Supply	n/a
4	Kampot Water Supply	n/a
5	Pursat Water Supply	n/a
6	Battambang Water Supply	n/a
7	Kampong Thom Water Supply	n/a
9	Svay Rieng Water Supply	n/a
10	Stung Treng Water Supply	n/a
11	Stong Water Supply (in K. Thom)	n/a
12	Tang Krasang Water Supply (in K. Thom)	n/a
UL_001	ឃុំអភិវឌ្ឍន៍	n/a
UL_002	ឃុំអភិវឌ្ឍន៍	n/a
UL_003	ក្រុមហ៊ុនភូមិនិមិត	n/a
UL_004	ក្រុមហ៊ុនភូមិនិមិត	n/a
UL_005	ក្រុមហ៊ុនធាយណាខនស្រុកស៊ីនអេជ័រ	n/a
UL_006	ក្រុមហ៊ុនធាយណាខនស្រុកស៊ីនអេជ័រ	n/a
LC_003	Chhom Dalis	n/a
LC_011	Heang Dara	n/a
LC_019	Mrs.Kry Kaovney	n/a
LC_008	Leng Khiev	0
LC_013	Mr. Srun Bunpor	n/a
LC_018	Mr.Nob Sinat	n/a
LC_015	Mr. Chea Kheng	n/a
LC_048	Mrs. Sek Kong	n/a
LC_012	Golden Bull Co., Ltd.	n/a
LC_030	Phae Dalin	n/a
LC_028	Tun Leakhena	n/a
LC_026	Ngov Chhorvorn	0
LC_033	Nun Reaksmey	n/a
LC_037	Mrs. Uy Sokha	n/a
LC_035	Mr. Srey Sokhom	n/a
LC_024	Mr. Seang Sengheab	0
LC_025	Mr. Chea Sron	n/a
LC_086	Mr. Eng Chayhout	n/a
LC_050	Mr. Soung Sarath	n/a
LC_057	Ann Ko Water Suply Co.Ltd	n/a
LC_065	Vong Reakmey	n/a
LC_039	Chhun Sarin	n/a
LC_068	Mr. Try Yousith	n/a
LC_061	Mr. Chun Vanthorn	n/a
LC_093	Mrs. Em Sophy	n/a
LC_041	Mr. Lim Sreng	n/a
LC_122	LYP Group	n/a
LC_115	Sang Seab	n/a
LC_118	Seang Kimsreng	n/a
LC_067	Neang KiKemEng	n/a
LC_069	Sok Nay	n/a
LC_070	Chev Sony	n/a
LC_079	Boeung Loum	n/a
LC_113	Mrs. Chhuon Florina	n/a
LC_071	Mr. Ey Mao	n/a
LC_076	Mr. Tak Chan Kouy	n/a
LC_073	Mr. Dout Touch	n/a
LC_105	Mr. Ly Vongdy	n/a
1	Phnom Penh Water Supply Authority (PPWSA)	n/a
LC_100	Ly Heng	0
LC_099	Touch Sophoan	n/a
LC_104	Lan Chheav	0
LC_103	Khun Sophal	0
LC_089	Anco Water Supply	n/a
LC_116	Un Channary	n/a
LC_129	Mr.Amnot Viriya	n/a
LC_133	Mr. Chea Sarith	n/a
LC_036	Mr. Khorl Vibol	n/a
LC_020	Mrs. Ngin Vanna	0
LC_112	Touch Saren	n/a
LC_114	Kav San	n/a

LC_119	Tang Hokkhy	n/a
LC_117	Som Champey	n/a
LC_096	Sovanndara Pheanich Co.Ltd	n/a
LC_094	Vong Sambo	n/a
LC_135	Tai Seng Phalit Teuksaat Co., Ltd.	n/a
LC_132	Mr.Long Rin	n/a
LC_095	Mr. Thlang Sarath	n/a
LC_109	Mrs. Hoy Leakhena	n/a
LC_090	Sok Ngoun	n/a
LC_056	Tov Nearyphall	n/a
LC_083	Toeum Sarert	n/a
LC_082	Chea Sokhom	n/a
LC_072	Mrs. Rong Keang	n/a
LC_108	Mr. Poav Dort	n/a
LC_088	Mr.Touch Sithy	n/a
LC_085	Mrs. Heak DaraSamphors	n/a
LC_084	Mr. Men Ngouk	n/a
LC_078	Mrs. Chea Chhunlim	n/a
LC_081	Frong Nasy Co. Ltd	n/a
LC_107	Chea Sambou	n/a
LC_060	Ouknha Lim Heng	n/a
LC_031	Mak Thun	n/a
LC_032	Mak Thun	n/a
LC_102	Dy Pisey	0
LC_021	Mrs.Ngin Vanna	0
LC_077	Mr. Kho Bunheat	n/a
LC_005	Mrs. Chan Nary	0
LC_127	Mr. Sim Pheakdey	n/a
LC_106	Mr. Tho Sopheak	n/a
LC_101	Dy Pisey	0
LC_097	Nob Sida	n/a
UL_008	Vorn Bros	n/a
LC_058	Sear Ben	n/a
LC_055	Khun Appivath Co.Ltd	n/a
LC_074	Mr. Leang Davich	n/a
LC_137	Mean Rithy	n/a
LC_059	Eng Kang Development Coperation and Construction Co.Ltd	n/a
LC_120	Khoo Meng Huot Co.Ltd	n/a
LC_043	Mr. Cheak Kimly	n/a
LC_044	Mr. Sous Pouy	n/a
LC_138	Chheng Sokunthea	n/a
LC_140	Pen Savann	n/a
LC_141	Nei Chandoeun	n/a
LC_142	Heng Sivaro	n/a
LC_098	Nong Naret	n/a
LC_139	Mrs. Siev Sreymean	n/a
LC_143	SOMA FARM ( CAMBODIA )	n/a
LC_144	Uon Bunnat	n/a
LC_145	Sok Sophara	n/a
LC_063	Kampot Port Co., Ltd.	n/a
LC_146	Cheang Choun	n/a
LC_147	moy phallang	n/a
LC_148	Long Mab	n/a
LC_149	Moy Buheng	n/a
LC_150	Chea Sambo	n/a
UL_009	Seav Hout	n/a
LC_151	Ou Sarim	n/a
LC_152	Phon KimLong	n/a
LC_158	Lim Heng Group	n/a
LC_153	Eng Chhayhout	n/a
LC_154	Chim Sideth	n/a
LC_157	Mrs. Va Pisal	n/a
LC_124	Ouknha Kok An	n/a
8	Kampong Cham Water Supply	n/a
LC_155	Mrs. Phoung Maly	n/a
LC_156	Mrs. Meas Channa	n/a

LC_159	Mrs Eng Saroun	n/a
LC_161	Mr. Por Pouch	n/a
LC_162	Mr. Sear Seangheng	n/a
LC_165	Mr. Moy Sophom	n/a
LC_166	Mr. Kang Senkosal	n/a
LC_121	Tho Mak Import Export and Construction Co.Ltd	n/a
LC_163	Mrs. Chea Savoeun	n/a
LC_167	Mrs. Srun Srey Oun	n/a
LC_168	Mr. Yomg Sambath	n/a
LC_169	Mr. Chrek Bo	n/a
LC_160	Mr. Tob Sophal	n/a
LC_170	PHNOM PENH SEZ Co., Ltd.	n/a
LC_001	Mekong Portable Co.Ltd	n/a
LC_171	Mr. Mean Phouen	n/a
LC_164	Mr. Sreav Chek	n/a
LC_171	Mr. Say Hong	n/a
LC_125	Ly Dara	n/a
LC_172	Mr. Khegn Tai Veng	n/a
LC_173	Mrs. Seang Nakea	n/a
LC_174	Mr. Pen Makaravuth	n/a
LC_022	Mr.Lang Hav	n/a
LC_004	Mr. Nget Sothy	0
LC_130	Mrs. Chhuon Florina	n/a
LC_007	Khenh Tayveng	n/a
LC_131	Mr. Seng You	n/a
LC_006	Mrs.Chan Nary	0
LC_042	Mr. Hem March	n/a
LC_175	Mr. Liv Chung Chamnan	n/a
LC_040	Mr. Oum Chanto	n/a
LC_038	Mr. Lay Longdy	n/a
LC_176	Mr. Leng Simtheng	n/a
LC_009	Kin Sokhom	0
LC_177	Mr. Khorn Menghong	n/a
LC_182	Mr. Moeu Mean	n/a
LC_017	Mr. Meng Lai	n/a
LC_111	Mr. Chea Veng	n/a
LC_029	Mrs.Theng Dany	0
LC_010	Mr. Lak Mengly	0
LC_178	Mr. Pech Chhoeun	n/a
LC_180	Mr. Meng Songhak	n/a
LC_181	Mr. Nuon Sophanara	n/a
LC_064	Mrs. Ing Torn	n/a
LC_179	Mr. Tit Sarou	n/a
LC_053	Mrs. Lim Muy	n/a
LC_092	Mrs. Um Someth	n/a
LC_091	Mr. Khun Lam	n/a
LC_075	Mr. Chin Ratha	n/a
LC_034	Nun Reaksmey	n/a
LC_002	Prey Kob Construction Co.Ltd	n/a
LC_049	Mr. Eang Mab	n/a
LC_054	Mrs. Pom Chab	n/a
LC_051	Mr. Chhel Rithy	n/a
LC_047	Mr. Tong Sophea	n/a
LC_046	Mr. Sang Vuthy	n/a
LC_066	Vong Sophoan	n/a
LC_080	Vat Sovannary	n/a
LC_014	Rom Arun	n/a
LC_016	Horn Ngoun	n/a
LC_045	Borey Kamkior Co.Ltd.	n/a
LC_062	Mrs.An Mouy Kan	n/a
LC_027	Mrs.Heng Leaksey	0
LC_126	Sothevy Lungvek Apivorth Co.,Ltd.	n/a
LC_023	Mrs. Chea EngLay	n/a
LC_052	Meas Vanthoeun	n/a
LC_110	Pouk District Water Supply Co.,Ltd.	n/a
13	Modulkiri Public Water Supply	n/a
LC_128	Mr.Amnot Viriya	n/a

LC_123	Ket Construction Co.Ltd	n/a
LC_134	Chhom Dalis	n/a



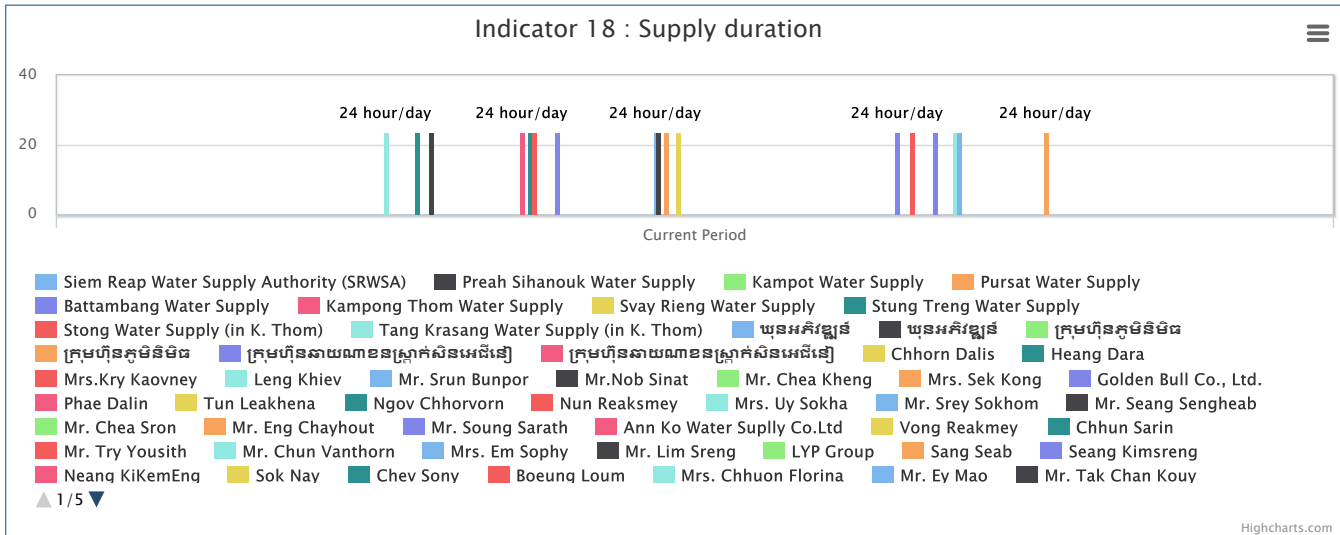
► Indicator 18 : Supply duration

Code	Operator Name	Data
2	Siem Reap Water Supply Authority ( SRWSA )	n/a
3	Preah Sihanouk Water Supply	n/a
4	Kampot Water Supply	n/a
5	Pursat Water Supply	n/a
6	Battambang Water Supply	n/a
7	Kampong Thom Water Supply	n/a
9	Svay Rieng Water Supply	n/a
10	Stung Treng Water Supply	n/a
11	Stong Water Supply ( in K. Thom )	n/a
12	Tang Krasang Water Supply ( in K. Thom )	n/a
UL_001	យួនអភិវឌ្ឍន៍	n/a
UL_002	យួនអភិវឌ្ឍន៍	n/a
UL_003	ក្រុមហ៊ុនភូមិនិមិត	n/a
UL_004	ក្រុមហ៊ុនភូមិនិមិត	n/a
UL_005	ក្រុមហ៊ុនធាយណាខនស្រ្តាក់សិនអេជីនៀ	n/a
UL_006	ក្រុមហ៊ុនធាយណាខនស្រ្តាក់សិនអេជីនៀ	n/a
LC_003	Chhom Dalis	n/a
LC_011	Heang Dara	n/a
LC_019	Mrs.Kry Kaovney	n/a
LC_008	Leng Khiev	24
LC_013	Mr. Srun Bunpor	n/a
LC_018	Mr.Nob Sinat	n/a
LC_015	Mr. Chea Kheng	n/a
LC_048	Mrs. Sek Kong	n/a
LC_012	Golden Bull Co., Ltd.	n/a
LC_030	Phae Dalin	n/a
LC_028	Tun Leakhena	n/a
LC_026	Ngov Chhorvorn	24
LC_033	Nun Reaksmey	n/a
LC_037	Mrs. Uy Sokha	n/a
LC_035	Mr. Srey Sokhom	n/a
LC_024	Mr. Seang Sengheab	24
LC_025	Mr. Chea Sron	n/a
LC_086	Mr. Eng Chayhout	n/a
LC_050	Mr. Soung Sarath	n/a
LC_057	Ann Ko Water Supply Co.Ltd	n/a
LC_065	Vong Reakmey	n/a
LC_039	Chhun Sarin	n/a
LC_068	Mr. Try Yousith	n/a
LC_061	Mr. Chun Vanthorn	n/a
LC_093	Mrs. Em Sophy	n/a

LC_041	Mr. Lim Sreng	n/a
LC_122	LYP Group	n/a
LC_115	Sang Seab	n/a
LC_118	Seang Kimsreng	n/a
LC_067	Neang KiKemEng	n/a
LC_069	Sok Nay	n/a
LC_070	Chev Sony	n/a
LC_079	Boeung Loum	n/a
LC_113	Mrs. Chhuon Florina	n/a
LC_071	Mr. Ey Mao	n/a
LC_076	Mr. Tak Chan Kouy	n/a
LC_073	Mr. Dout Touch	n/a
LC_105	Mr. Ly Vongdy	n/a
1	Phnom Penh Water Supply Authority ( PPWSA )	n/a
LC_100	Ly Heng	24
LC_099	Touch Sophoan	n/a
LC_104	Lan Chheav	24
LC_103	Khun Sophal	24
LC_089	Anco Water Supply	n/a
LC_116	Un Channary	n/a
LC_129	Mr.Amnot Viriya	n/a
LC_133	Mr. Chea Sarith	n/a
LC_036	Mr. Khorl Vibol	n/a
LC_020	Mrs. Ngim Vanna	24
LC_112	Touch Saren	n/a
LC_114	Kav San	n/a
LC_119	Tang Hokkhy	n/a
LC_117	Som Champey	n/a
LC_096	Sovannara Pheanich Co.Ltd	n/a
LC_094	Vong Sambo	n/a
LC_135	Tai Seng Phalit Teuksaat Co., Ltd.	n/a
LC_132	Mr.Long Rin	n/a
LC_095	Mr. Thlang Sarath	n/a
LC_109	Mrs. Hoy Leakhena	n/a
LC_090	Sok Ngoun	n/a
LC_056	Tov Nearyphall	n/a
LC_083	Toeum Sarert	n/a
LC_082	Chea Sokhom	n/a
LC_072	Mrs. Rong Keang	n/a
LC_108	Mr. Poav Dort	n/a
LC_088	Mr.Touch Sithy	n/a
LC_085	Mrs. Heak DaraSamphors	n/a
LC_084	Mr. Men Ngouk	n/a
LC_078	Mrs. Chea Chhunlim	n/a
LC_081	Frong Nasy Co. Ltd	n/a
LC_107	Chea Sambou	n/a
LC_060	Ouknha Lim Heng	n/a
LC_031	Mak Thun	n/a
LC_032	Mak Thun	n/a
LC_102	Dy Pisey	24
LC_021	Mrs.Ngim Vanna	24
LC_077	Mr. Kho Bunheat	n/a
LC_005	Mrs. Chan Nary	24
LC_127	Mr. Sim Pheakdey	n/a
LC_106	Mr. Tho Sopheak	n/a
LC_101	Dy Pisey	24
LC_097	Nob Sida	n/a
UL_008	Vorn Bros	n/a
LC_058	Sear Ben	n/a
LC_055	Khun Appivath Co.Ltd	n/a
LC_074	Mr. Leang Davich	n/a
LC_137	Mean Rithy	n/a
LC_059	Eng Kang Development Coperation and Construction Co.Ltd	n/a
LC_120	Khoo Meng Huot Co.Ltd	n/a
LC_043	Mr. Cheak Kimly	n/a
LC_044	Mr. Sous Pouy	n/a
LC_138	Chheng Sokunthea	n/a

LC_140	Pen Savann	n/a
LC_141	Nei Chandoeun	n/a
LC_142	Heng Sivaro	n/a
LC_098	Nong Naret	n/a
LC_139	Mrs. Siev Sreymean	n/a
LC_143	SOMA FARM ( CAMBODIA )	n/a
LC_144	Uon Bunnat	n/a
LC_145	Sok Sophara	n/a
LC_063	Kampot Port Co., Ltd.	n/a
LC_146	Cheang Choun	n/a
LC_147	moy phallang	n/a
LC_148	Long Mab	n/a
LC_149	Moy Buheng	n/a
LC_150	Chea Sambo	n/a
UL_009	Seav Hout	n/a
LC_151	Ou Sarim	n/a
LC_152	Phon KimLong	n/a
LC_158	Lim Heng Group	n/a
LC_153	Eng Chhayhout	n/a
LC_154	Chim Sideth	n/a
LC_157	Mrs. Va Pisal	n/a
LC_124	Ouknha Kok An	n/a
8	Kampong Cham Water Supply	n/a
LC_155	Mrs. Phoung Maly	n/a
LC_156	Mrs. Meas Channa	n/a
LC_159	Mrs Eng Saroun	n/a
LC_161	Mr. Por Pouch	n/a
LC_162	Mr. Sear Seangheng	n/a
LC_165	Mr. Moy Sophom	n/a
LC_166	Mr. Kang Senkosal	n/a
LC_121	Tho Mak Import Export and Construction Co.Ltd	n/a
LC_163	Mrs. Chea Savoeun	n/a
LC_167	Mrs. Srun Srey Oun	n/a
LC_168	Mr. Yomg Sambath	n/a
LC_169	Mr. Chrek Bo	n/a
LC_160	Mr. Tob Sophal	n/a
LC_170	PHNOM PENH SEZ Co., Ltd.	n/a
LC_001	Mekong Portable Co.Ltd	n/a
LC_171	Mr. Mean Phouen	n/a
LC_164	Mr. Sreav Chek	n/a
LC_171	Mr. Say Hong	n/a
LC_125	Ly Dara	n/a
LC_172	Mr. Khegn Tai Veng	n/a
LC_173	Mrs. Seang Nakea	n/a
LC_174	Mr. Pen Makaravuth	n/a
LC_022	Mr.Lang Hav	n/a
LC_004	Mr. Nget Sothy	24
LC_130	Mrs. Chhuon Florina	n/a
LC_007	Khenh Tayveng	n/a
LC_131	Mr. Seng You	n/a
LC_006	Mrs.Chan Nary	24
LC_042	Mr. Hem March	n/a
LC_175	Mr. Liv Chung Chamnan	n/a
LC_040	Mr. Oum Chanto	n/a
LC_038	Mr. Lay Longdy	n/a
LC_176	Mr. Leng Simtheng	n/a
LC_009	Kin Sokhom	24
LC_177	Mr. Khorn Menghong	n/a
LC_182	Mr. Moeu Mean	n/a
LC_017	Mr. Meng Lai	n/a
LC_111	Mr. Chea Veng	n/a
LC_029	Mrs.Theng Dany	24
LC_010	Mr. Lak Mengly	24
LC_178	Mr. Pech Chhoeun	n/a
LC_180	Mr. Meng Songhak	n/a
LC_181	Mr. Nuon Sophanara	n/a

LC_064	Mrs. Ing Tom	n/a
LC_179	Mr. Tit Sarou	n/a
LC_053	Mrs. Lim Muy	n/a
LC_092	Mrs. Um Someth	n/a
LC_091	Mr. Khun Lam	n/a
LC_075	Mr. Chin Ratha	n/a
LC_034	Nun Reaksmey	n/a
LC_002	Prey Kob Construction Co.Ltd	n/a
LC_049	Mr. Eang Mab	n/a
LC_054	Mrs. Pom Chab	n/a
LC_051	Mr. Chhel Rithy	n/a
LC_047	Mr. Tong Sophea	n/a
LC_046	Mr. Sang Vuthy	n/a
LC_066	Vong Sophoan	n/a
LC_080	Vat Sovannary	n/a
LC_014	Rom Arun	n/a
LC_016	Horn Ngoun	n/a
LC_045	Borey Kamkior Co.Ltd.	n/a
LC_062	Mrs.An Mouy Kan	n/a
LC_027	Mrs.Heng Leaksey	24
LC_126	Sothevy Lungvek Apivorth Co.,Ltd.	n/a
LC_023	Mrs. Chea EngLay	n/a
LC_052	Meas Vanthoeun	n/a
LC_110	Pouk District Water Supply Co.,Ltd.	n/a
13	Modulkiri Public Water Supply	n/a
LC_128	Mr.Amnot Viriya	n/a
LC_123	Ket Construction Co.Ltd	n/a
LC_134	Chhorn Dalis	n/a



Indicator 24 : License Area Profile

Code	Operator Name	Data
2	Siem Reap Water Supply Authority (SRWSA)	<a href="#">View</a>
3	Preah Sihanouk Water Supply	<a href="#">View</a>
4	Kampot Water Supply	<a href="#">View</a>
5	Pursat Water Supply	<a href="#">View</a>
6	Battambang Water Supply	<a href="#">View</a>
7	Kampong Thom Water Supply	<a href="#">View</a>
9	Svay Rieng Water Supply	<a href="#">View</a>
10	Stung Treng Water Supply	<a href="#">View</a>
11	Stong Water Supply (in K. Thom)	<a href="#">View</a>
12	Tang Krasang Water Supply (in K. Thom)	<a href="#">View</a>
UL_001	បុនអភិវឌ្ឍន៍	



		<a href="#">View</a>
UL_002	យុនអភិវឌ្ឍន៍	<a href="#">View</a>
UL_003	ក្រុមហ៊ុនភូមិនិមិត	<a href="#">View</a>
UL_004	ក្រុមហ៊ុនភូមិនិមិត	<a href="#">View</a>
UL_005	ក្រុមហ៊ុនតាយណាខនស្រ្តាក់សិនអេជីនេ	<a href="#">View</a>
UL_006	ក្រុមហ៊ុនតាយណាខនស្រ្តាក់សិនអេជីនេ	<a href="#">View</a>
LC_003	Chhom Dalis	<a href="#">View</a>
LC_011	Heang Dara	<a href="#">View</a>
LC_019	Mrs.Kry Kaovney	<a href="#">View</a>
LC_008	Leng Khiev	<a href="#">View</a>
LC_013	Mr. Srun Bunpor	<a href="#">View</a>
LC_018	Mr.Nob Sinat	<a href="#">View</a>
LC_015	Mr. Chea Kheng	<a href="#">View</a>
LC_048	Mrs. Sek Kong	<a href="#">View</a>
LC_012	Golden Bull Co., Ltd.	<a href="#">View</a>
LC_030	Phae Dalin	<a href="#">View</a>
LC_028	Tun Leakhena	<a href="#">View</a>
LC_026	Ngov Chhorvorn	<a href="#">View</a>
LC_033	Nun Reaksmey	<a href="#">View</a>
LC_037	Mrs. Uy Sokha	<a href="#">View</a>
LC_035	Mr. Srey Sokhom	<a href="#">View</a>
LC_024	Mr. Seang Sengheab	<a href="#">View</a>
LC_025	Mr. Chea Sron	<a href="#">View</a>
LC_086	Mr. Eng Chayhout	<a href="#">View</a>
LC_050	Mr. Soung Sarath	<a href="#">View</a>
LC_057	Ann Ko Water Supply Co.Ltd	<a href="#">View</a>
LC_065	Vong Reakmey	<a href="#">View</a>
LC_039	Chhun Sarin	<a href="#">View</a>
LC_068	Mr. Try Yousith	<a href="#">View</a>
LC_061	Mr. Chun Vanthorn	<a href="#">View</a>
LC_093	Mrs. Em Sophy	<a href="#">View</a>
LC_041	Mr. Lim Sreng	<a href="#">View</a>
LC_122	LYP Group	<a href="#">View</a>
LC_115	Sang Seab	<a href="#">View</a>
LC_118	Seang Kimsreng	<a href="#">View</a>
LC_067	Neang KiKemEng	<a href="#">View</a>
LC_069	Sok Nay	<a href="#">View</a>
LC_070	Chev Sony	<a href="#">View</a>
LC_079	Boeung Loum	<a href="#">View</a>
LC_113	Mrs. Chhuon Florina	<a href="#">View</a>
LC_071	Mr. Ey Mao	<a href="#">View</a>
LC_076	Mr. Tak Chan Kouy	<a href="#">View</a>
LC_073	Mr. Dout Touch	<a href="#">View</a>
LC_105	Mr. Ly Vongdy	<a href="#">View</a>
1	Phnom Penh Water Supply Authority (PPWSA)	<a href="#">View</a>
LC_100	Ly Heng	<a href="#">View</a>

LC_099	Touch Sophoan	<a href="#">View</a>
LC_104	Lan Chheav	<a href="#">View</a>
LC_103	Khun Sophal	<a href="#">View</a>
LC_089	Anco Water Supply	<a href="#">View</a>
LC_116	Un Channary	<a href="#">View</a>
LC_129	Mr.Amnot Viriya	<a href="#">View</a>
LC_133	Mr. Chea Sarith	<a href="#">View</a>
LC_036	Mr. Khorl Vibol	<a href="#">View</a>
LC_020	Mrs. Ngin Vanna	<a href="#">View</a>
LC_112	Touch Saren	<a href="#">View</a>
LC_114	Kav San	<a href="#">View</a>
LC_119	Tang Hokkhy	<a href="#">View</a>
LC_117	Som Champey	<a href="#">View</a>
LC_096	Sovanndara Pheanich Co.Ltd	<a href="#">View</a>
LC_094	Vong Sambo	<a href="#">View</a>
LC_135	Tai Seng Phalit Teuksaat Co., Ltd.	<a href="#">View</a>
LC_132	Mr.Long Rin	<a href="#">View</a>
LC_095	Mr. Thlang Sarath	<a href="#">View</a>
LC_109	Mrs. Hoy Leakhena	<a href="#">View</a>
LC_090	Sok Ngoun	<a href="#">View</a>
LC_056	Tov Nearyphall	<a href="#">View</a>
LC_083	Toeum Sarent	<a href="#">View</a>
LC_082	Chea Sokhorn	<a href="#">View</a>
LC_072	Mrs. Rong Keang	<a href="#">View</a>
LC_108	Mr. Poav Dort	<a href="#">View</a>
LC_088	Mr.Touch Sithy	<a href="#">View</a>
LC_085	Mrs. Heak DaraSamphors	<a href="#">View</a>
LC_084	Mr. Men Ngouk	<a href="#">View</a>
LC_078	Mrs. Chea Chhunlim	<a href="#">View</a>
LC_081	Frong Nasy Co. Ltd	<a href="#">View</a>
LC_107	Chea Sambou	<a href="#">View</a>
LC_060	Ouknha Lim Heng	<a href="#">View</a>
LC_031	Mak Thun	<a href="#">View</a>
LC_032	Mak Thun	<a href="#">View</a>
LC_102	Dy Pisey	<a href="#">View</a>
LC_021	Mrs.Ngin Vanna	<a href="#">View</a>
LC_077	Mr. Kho Bunheat	<a href="#">View</a>
LC_005	Mrs. Chan Nary	<a href="#">View</a>
LC_127	Mr. Sim Pheakdey	<a href="#">View</a>
LC_106	Mr. Tho Sopheak	<a href="#">View</a>
LC_101	Dy Pisey	<a href="#">View</a>
LC_097	Nob Sida	<a href="#">View</a>
UL_008	Vom Bros	<a href="#">View</a>
LC_058	Sear Ben	<a href="#">View</a>
LC_055	Khun Appivath Co.Ltd	<a href="#">View</a>
LC_074	Mr. Leang Davich	<a href="#">View</a>

		<a href="#">View</a>
LC_137	Mean Rithy	<a href="#">View</a>
LC_059	Eng Kang Development Coperation and Construction Co.Ltd	<a href="#">View</a>
LC_120	Khoo Meng Huot Co.Ltd	<a href="#">View</a>
LC_043	Mr. Cheak Kimly	<a href="#">View</a>
LC_044	Mr. Sous Pouy	<a href="#">View</a>
LC_138	Chheng Sokunthea	<a href="#">View</a>
LC_140	Pen Savann	<a href="#">View</a>
LC_141	Nei Chandoeun	<a href="#">View</a>
LC_142	Heng Sivaro	<a href="#">View</a>
LC_098	Nong Naret	<a href="#">View</a>
LC_139	Mrs. Siev Sreymean	<a href="#">View</a>
LC_143	SOMA FARM ( CAMBODIA )	<a href="#">View</a>
LC_144	Un Bunnat	<a href="#">View</a>
LC_145	Sok Sophara	<a href="#">View</a>
LC_063	Kampot Port Co., Ltd.	<a href="#">View</a>
LC_146	Cheang Choun	<a href="#">View</a>
LC_147	moy phallang	<a href="#">View</a>
LC_148	Long Mab	<a href="#">View</a>
LC_149	Moy Buheng	<a href="#">View</a>
LC_150	Chea Sambo	<a href="#">View</a>
UL_009	Seav Hout	<a href="#">View</a>
LC_151	Ou Sarim	<a href="#">View</a>
LC_152	Phon KimLong	<a href="#">View</a>
LC_158	Lim Heng Group	<a href="#">View</a>
LC_153	Eng Chhayhout	<a href="#">View</a>
LC_154	Chim Sideth	<a href="#">View</a>
LC_157	Mrs. Va Pisal	<a href="#">View</a>
LC_124	Ouknha Kok An	<a href="#">View</a>
8	Kampong Cham Water Supply	<a href="#">View</a>
LC_155	Mrs. Phoung Maly	<a href="#">View</a>
LC_156	Mrs. Meas Channa	<a href="#">View</a>
LC_159	Mrs Eng Saroun	<a href="#">View</a>
LC_161	Mr. Por Pouch	<a href="#">View</a>
LC_162	Mr. Sear Seangheng	<a href="#">View</a>
LC_165	Mr. Moy Sophom	<a href="#">View</a>
LC_166	Mr. Kang Senkosal	<a href="#">View</a>
LC_121	Tho Mak Import Export and Construction Co.Ltd	<a href="#">View</a>
LC_163	Mrs. Chea Savoeun	<a href="#">View</a>
LC_167	Mrs. Srun Srey Oun	<a href="#">View</a>
LC_168	Mr. Yomg Sambath	<a href="#">View</a>
LC_169	Mr. Chrek Bo	<a href="#">View</a>
LC_160	Mr. Tob Sophal	<a href="#">View</a>
LC_170	PHNOM PENH SEZ Co., Ltd.	<a href="#">View</a>
LC_001	Mekong Portable Co.Ltd	<a href="#">View</a>
LC_171	Mr. Mean Phouen	<a href="#">View</a>

LC_164	Mr. Sreav Chek	<a href="#">View</a>
LC_171	Mr. Say Hong	<a href="#">View</a>
LC_125	Ly Dara	<a href="#">View</a>
LC_172	Mr. Khegn Tai Veng	<a href="#">View</a>
LC_173	Mrs. Seang Nakea	<a href="#">View</a>
LC_174	Mr. Pen Makaravuth	<a href="#">View</a>
LC_022	Mr.Lang Hav	<a href="#">View</a>
LC_004	Mr. Nget Sothy	<a href="#">View</a>
LC_130	Mrs. Chhuon Florina	<a href="#">View</a>
LC_007	Khenh Tayveng	<a href="#">View</a>
LC_131	Mr. Seng You	<a href="#">View</a>
LC_006	Mrs.Chan Nary	<a href="#">View</a>
LC_042	Mr. Hem March	<a href="#">View</a>
LC_175	Mr. Liv Chung Chamnan	<a href="#">View</a>
LC_040	Mr. Oum Chanto	<a href="#">View</a>
LC_038	Mr. Lay Longdy	<a href="#">View</a>
LC_176	Mr. Leng Simtheng	<a href="#">View</a>
LC_009	Kin Sokhom	<a href="#">View</a>
LC_177	Mr. Khom Menghong	<a href="#">View</a>
LC_182	Mr. Moeu Mean	<a href="#">View</a>
LC_017	Mr. Meng Lai	<a href="#">View</a>
LC_111	Mr. Chea Veng	<a href="#">View</a>
LC_029	Mrs.Theng Dany	<a href="#">View</a>
LC_010	Mr. Lak Mengly	<a href="#">View</a>
LC_178	Mr. Pech Chhoeun	<a href="#">View</a>
LC_180	Mr. Meng Songhak	<a href="#">View</a>
LC_181	Mr. Nuon Sophanara	<a href="#">View</a>
LC_064	Mrs. Ing Torn	<a href="#">View</a>
LC_179	Mr. Tit Sarou	<a href="#">View</a>
LC_053	Mrs. Lim Muy	<a href="#">View</a>
LC_092	Mrs. Um Someth	<a href="#">View</a>
LC_091	Mr. Khun Lam	<a href="#">View</a>
LC_075	Mr. Chin Ratha	<a href="#">View</a>
LC_034	Nun Reaksmey	<a href="#">View</a>
LC_002	Prey Kob Construction Co.Ltd	<a href="#">View</a>
LC_049	Mr. Eang Mab	<a href="#">View</a>
LC_054	Mrs. Pom Chab	<a href="#">View</a>
LC_051	Mr. Chhel Rithy	<a href="#">View</a>
LC_047	Mr. Tong Sophea	<a href="#">View</a>
LC_046	Mr. Sang Vuthy	<a href="#">View</a>
LC_066	Vong Sophoan	<a href="#">View</a>
LC_080	Vat Sovannary	<a href="#">View</a>
LC_014	Rom Arun	<a href="#">View</a>
LC_016	Horn Ngoun	<a href="#">View</a>
LC_045	Borey Kamkior Co.Ltd.	<a href="#">View</a>
LC_062	Mrs.An Mouy Kan	<a href="#">View</a>

		<a href="#">View</a>
LC_027	Mrs.Heng Leaksey	<a href="#">View</a>
LC_126	Sothevy Lungvek Apivorth Co.,Ltd.	<a href="#">View</a>
LC_023	Mrs. Chea EngLay	<a href="#">View</a>
LC_052	Meas Vanthoeun	<a href="#">View</a>
LC_110	Pouk District Water Supply Co.,Ltd.	<a href="#">View</a>
13	Modulkiri Public Water Supply	<a href="#">View</a>
LC_128	Mr.Amnot Viriya	<a href="#">View</a>
LC_123	Ket Construction Co.Ltd	<a href="#">View</a>
LC_134	Chhom Dalis	<a href="#">View</a>

► Indicator 25 : Population of licensed area

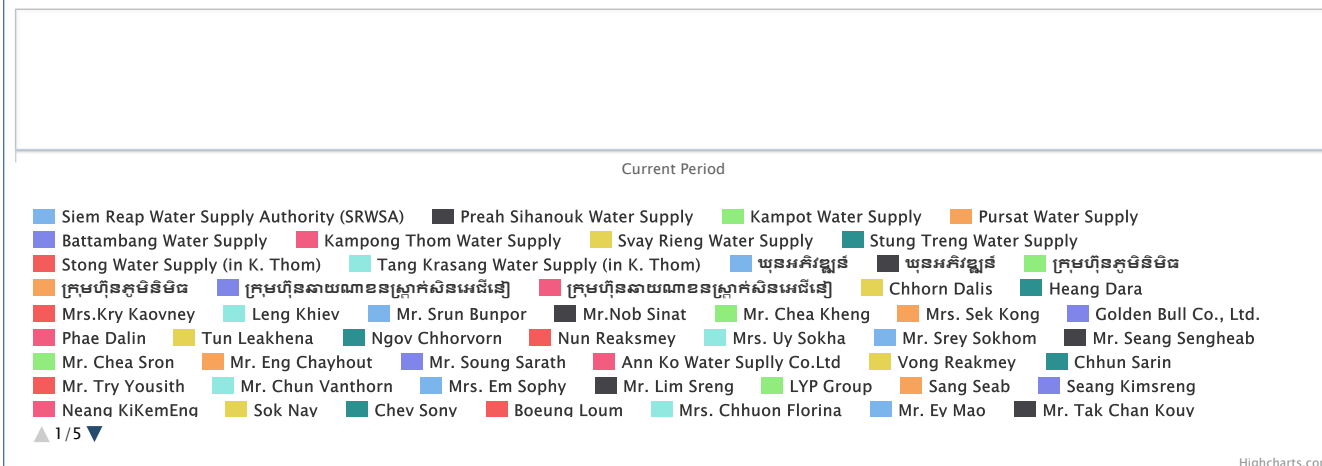
Code	Operator Name	Data
2	Siem Reap Water Supply Authority ( SRWSA )	n/a
3	Preah Sihanouk Water Supply	n/a
4	Kampot Water Supply	n/a
5	Pursat Water Supply	n/a
6	Battambang Water Supply	n/a
7	Kampong Thom Water Supply	n/a
9	Svay Rieng Water Supply	n/a
10	Stung Treng Water Supply	n/a
11	Stong Water Supply ( in K. Thom )	n/a
12	Tang Krasang Water Supply ( in K. Thom )	n/a
UL_001	ឃុំអភិវឌ្ឍន៍	n/a
UL_002	ឃុំអភិវឌ្ឍន៍	n/a
UL_003	ក្រុមហ៊ុនភូមិនិមិត	n/a
UL_004	ក្រុមហ៊ុនភូមិនិមិត	n/a
UL_005	ក្រុមហ៊ុនធាយណាខនស្រ្តាក់សិនអេជីនេ	n/a
UL_006	ក្រុមហ៊ុនធាយណាខនស្រ្តាក់សិនអេជីនេ	n/a
LC_003	Chhom Dalis	n/a
LC_011	Heang Dara	n/a
LC_019	Mrs.Kry Kaovney	n/a
LC_008	Leng Khiev	0
LC_013	Mr. Srun Bunpor	n/a
LC_018	Mr.Nob Sinat	n/a
LC_015	Mr. Chea Kheng	n/a
LC_048	Mrs. Sek Kong	n/a
LC_012	Golden Bull Co., Ltd.	n/a
LC_030	Phae Dalin	n/a
LC_028	Tun Leakhena	n/a
LC_026	Ngov Chhorvorn	0
LC_033	Nun Reaksmey	n/a
LC_037	Mrs. Uy Sokha	n/a
LC_035	Mr. Srey Sokhom	n/a
LC_024	Mr. Seang Sengheab	0
LC_025	Mr. Chea Sron	n/a
LC_086	Mr. Eng Chayhout	n/a
LC_050	Mr. Soung Sarath	n/a
LC_057	Ann Ko Water Supply Co.Ltd	n/a
LC_065	Vong Reakmey	n/a
LC_039	Chhun Sarin	n/a
LC_068	Mr. Try Yousith	n/a
LC_061	Mr. Chun Vanthorn	n/a
LC_093	Mrs. Em Sophy	n/a
LC_041	Mr. Lim Sreng	n/a
LC_122	LYP Group	n/a
LC_115	Sang Seab	n/a
LC_118	Seang Kimsreng	n/a
LC_067	Neang KiKemEng	n/a
LC_069	Sok Nay	n/a

LC_070	Chev Sony	n/a
LC_079	Boeung Loum	n/a
LC_113	Mrs. Chhuon Florina	n/a
LC_071	Mr. Ey Mao	n/a
LC_076	Mr. Tak Chan Kouy	n/a
LC_073	Mr. Dout Touch	n/a
LC_105	Mr. Ly Vongdy	n/a
1	Phnom Penh Water Supply Authority ( PPWSA )	n/a
LC_100	Ly Heng	0
LC_099	Touch Sophoan	n/a
LC_104	Lan Chheav	0
LC_103	Khun Sophal	0
LC_089	Anco Water Supply	n/a
LC_116	Un Channary	n/a
LC_129	Mr.Amnot Viriya	n/a
LC_133	Mr. Chea Sarith	n/a
LC_036	Mr. Khorl Vibol	n/a
LC_020	Mrs. Ngin Vanna	0
LC_112	Touch Saren	n/a
LC_114	Kav San	n/a
LC_119	Tang Hokkhy	n/a
LC_117	Som Champey	n/a
LC_096	Sovannara Pheanich Co.Ltd	n/a
LC_094	Vong Sambo	n/a
LC_135	Tai Seng Phalit Teuksaat Co., Ltd.	n/a
LC_132	Mr.Long Rin	n/a
LC_095	Mr. Thlang Sarath	n/a
LC_109	Mrs. Hoy Leakhena	n/a
LC_090	Sok Ngoun	n/a
LC_056	Tov Nearyphall	n/a
LC_083	Toeum Sarert	n/a
LC_082	Chea Sokhom	n/a
LC_072	Mrs. Rong Keang	n/a
LC_108	Mr. Poav Dort	n/a
LC_088	Mr.Touch Sithy	n/a
LC_085	Mrs. Heak DaraSamphors	n/a
LC_084	Mr. Men Ngouk	n/a
LC_078	Mrs. Chea Chhunlim	n/a
LC_081	Frong Nasy Co. Ltd	n/a
LC_107	Chea Sambou	n/a
LC_060	Ouknha Lim Heng	n/a
LC_031	Mak Thun	n/a
LC_032	Mak Thun	n/a
LC_102	Dy Pisey	0
LC_021	Mrs.Ngin Vanna	0
LC_077	Mr. Kho Bunheat	n/a
LC_005	Mrs. Chan Nary	0
LC_127	Mr. Sim Pheakdey	n/a
LC_106	Mr. Tho Sopheak	n/a
LC_101	Dy Pisey	0
LC_097	Nob Sida	n/a
UL_008	Vorn Bros	n/a
LC_058	Sear Ben	n/a
LC_055	Khun Appivath Co.Ltd	n/a
LC_074	Mr. Leang Davich	n/a
LC_137	Mean Rithy	n/a
LC_059	Eng Kang Development Coperation and Construction Co.Ltd	n/a
LC_120	Khoo Meng Huot Co.Ltd	n/a
LC_043	Mr. Cheak Kimly	n/a
LC_044	Mr. Sous Pouy	n/a
LC_138	Chheng Sokunthea	n/a
LC_140	Pen Savann	n/a
LC_141	Nei Chandoeun	n/a
LC_142	Heng Sivaro	n/a
LC_098	Nong Naret	n/a
LC_139	Mrs. Siev Sreymean	n/a
LC_143	SOMA FARM ( CAMBODIA )	n/a

LC_144	Uon Bunnat	n/a
LC_145	Sok Sophara	n/a
LC_063	Kampot Port Co., Ltd.	n/a
LC_146	Cheang Choun	n/a
LC_147	moy phallang	n/a
LC_148	Long Mab	n/a
LC_149	Moy Buheng	n/a
LC_150	Chea Sambo	n/a
UL_009	Seav Hout	n/a
LC_151	Ou Sarim	n/a
LC_152	Phon KimLong	n/a
LC_158	Lim Heng Group	n/a
LC_153	Eng Chhayhout	n/a
LC_154	Chim Sideth	n/a
LC_157	Mrs. Va Pisal	n/a
LC_124	Ouknha Kok An	n/a
8	Kampong Cham Water Supply	n/a
LC_155	Mrs. Phoung Maly	n/a
LC_156	Mrs. Meas Channa	n/a
LC_159	Mrs Eng Saroun	n/a
LC_161	Mr. Por Pouch	n/a
LC_162	Mr. Sear Seangheng	n/a
LC_165	Mr. Moy Sophom	n/a
LC_166	Mr. Kang Senkosal	n/a
LC_121	Tho Mak Import Export and Construction Co.Ltd	n/a
LC_163	Mrs. Chea Savoeun	n/a
LC_167	Mrs. Srun Srey Oun	n/a
LC_168	Mr. Yomg Sambath	n/a
LC_169	Mr. Chrek Bo	n/a
LC_160	Mr. Tob Sophal	n/a
LC_170	PHNOM PENH SEZ Co., Ltd.	n/a
LC_001	Mekong Portable Co.Ltd	n/a
LC_171	Mr. Mean Phouen	n/a
LC_164	Mr. Sreav Chek	n/a
LC_171	Mr. Say Hong	n/a
LC_125	Ly Dara	n/a
LC_172	Mr. Khegn Tai Veng	n/a
LC_173	Mrs. Seang Nakea	n/a
LC_174	Mr. Pen Makaravuth	n/a
LC_022	Mr.Lang Hav	n/a
LC_004	Mr. Nget Sothy	0
LC_130	Mrs. Chhuon Florina	n/a
LC_007	Khenh Tayveng	n/a
LC_131	Mr. Seng You	n/a
LC_006	Mrs.Chan Nary	0
LC_042	Mr. Hem March	n/a
LC_175	Mr. Liv Chung Chamnan	n/a
LC_040	Mr. Oum Chanto	n/a
LC_038	Mr. Lay Longdy	n/a
LC_176	Mr. Leng Simtheng	n/a
LC_009	Kin Sokhom	0
LC_177	Mr. Khom Menghong	n/a
LC_182	Mr. Moeu Mean	n/a
LC_017	Mr. Meng Lai	n/a
LC_111	Mr. Chea Veng	n/a
LC_029	Mrs.Theng Dany	0
LC_010	Mr. Lak Mengly	0
LC_178	Mr. Pech Chhoeun	n/a
LC_180	Mr. Meng Songhak	n/a
LC_181	Mr. Nuon Sophanara	n/a
LC_064	Mrs. Ing Torn	n/a
LC_179	Mr. Tit Sarou	n/a
LC_053	Mrs. Lim Muy	n/a
LC_092	Mrs. Um Someth	n/a
LC_091	Mr. Khun Lam	n/a
LC_075	Mr. Chin Ratha	n/a

LC_034	Nun Reaksmeay	n/a
LC_002	Prey Kob Construction Co.Ltd	n/a
LC_049	Mr. Eang Mab	n/a
LC_054	Mrs. Pom Chab	n/a
LC_051	Mr. Chhel Rithy	n/a
LC_047	Mr. Tong Sophea	n/a
LC_046	Mr. Sang Vuthy	n/a
LC_066	Vong Sophoan	n/a
LC_080	Vat Sovannary	n/a
LC_014	Rom Arun	n/a
LC_016	Horn Ngoun	n/a
LC_045	Borey Kamkior Co.Ltd.	n/a
LC_062	Mrs.An Mouy Kan	n/a
LC_027	Mrs.Heng Leaksey	0
LC_126	Sothevy Lungvek Apivorth Co.,Ltd.	n/a
LC_023	Mrs. Chea EngLay	n/a
LC_052	Meas Vanthoeun	n/a
LC_110	Pouk District Water Supply Co.,Ltd.	n/a
13	Modulkiri Public Water Supply	n/a
LC_128	Mr.Amnot Viriya	n/a
LC_123	Ket Construction Co.Ltd	n/a
LC_134	Chhorn Dalis	n/a

Indicator 25 : Population of licensed area



Indicator 26 : Houses of licensed area

Code	Operator Name	Data
2	Siem Reap Water Supply Authority ( SRWSA )	n/a
3	Preah Sihanouk Water Supply	n/a
4	Kampot Water Supply	n/a
5	Pursat Water Supply	n/a
6	Battambang Water Supply	n/a
7	Kampong Thom Water Supply	n/a
9	Svay Rieng Water Supply	n/a
10	Stung Treng Water Supply	n/a
11	Stong Water Supply ( in K. Thom )	n/a
12	Tang Krasang Water Supply ( in K. Thom )	n/a
UL_001	ឃុនអភិវឌ្ឍន៍	n/a
UL_002	ឃុនអភិវឌ្ឍន៍	n/a
UL_003	ក្រុមហ៊ុនភូមិនិមិត	n/a
UL_004	ក្រុមហ៊ុនភូមិនិមិត	n/a
UL_005	ក្រុមហ៊ុនធាយណាខនស្រ្តាក់សិនអេជីនៀ	n/a
UL_006	ក្រុមហ៊ុនធាយណាខនស្រ្តាក់សិនអេជីនៀ	n/a
LC_003	Chhorn Dalis	n/a
LC_011	Heang Dara	n/a
LC_019	Mrs.Kry Kaovney	n/a
LC_008	Leng Khiev	0
LC_013	Mr. Srun Bunpor	n/a



LC_018	Mr.Nob Sinat	n/a
LC_015	Mr. Chea Kheng	n/a
LC_048	Mrs. Sek Kong	n/a
LC_012	Golden Bull Co., Ltd.	n/a
LC_030	Phae Dalin	n/a
LC_028	Tun Leakhena	n/a
LC_026	Ngov Chhorvorn	0
LC_033	Nun Reaksmey	n/a
LC_037	Mrs. Uy Sokha	n/a
LC_035	Mr. Srey Sokhom	n/a
LC_024	Mr. Seang Sengheab	0
LC_025	Mr. Chea Sron	n/a
LC_086	Mr. Eng Chayhout	n/a
LC_050	Mr. Soung Sarath	n/a
LC_057	Ann Ko Water Supply Co.Ltd	n/a
LC_065	Vong Reakmey	n/a
LC_039	Chhun Sarin	n/a
LC_068	Mr. Try Yousith	n/a
LC_061	Mr. Chun Vanthom	n/a
LC_093	Mrs. Em Sophy	n/a
LC_041	Mr. Lim Sreng	n/a
LC_122	LYP Group	n/a
LC_115	Sang Seab	n/a
LC_118	Seang Kimsreng	n/a
LC_067	Neang KiKemEng	n/a
LC_069	Sok Nay	n/a
LC_070	Chev Sony	n/a
LC_079	Boeung Loum	n/a
LC_113	Mrs. Chhuon Florina	n/a
LC_071	Mr. Ey Mao	n/a
LC_076	Mr. Tak Chan Kouy	n/a
LC_073	Mr. Dout Touch	n/a
LC_105	Mr. Ly Vongdy	n/a
1	Phnom Penh Water Supply Authority (PPWSA)	n/a
LC_100	Ly Heng	0
LC_099	Touch Sophoan	n/a
LC_104	Lan Chheav	0
LC_103	Khun Sophal	0
LC_089	Anco Water Supply	n/a
LC_116	Un Channary	n/a
LC_129	Mr.Amnot Viriya	n/a
LC_133	Mr. Chea Sarith	n/a
LC_036	Mr. Khorl Vibol	n/a
LC_020	Mrs. Ngim Vanna	0
LC_112	Touch Saren	n/a
LC_114	Kav San	n/a
LC_119	Tang Hokkhy	n/a
LC_117	Sorn Champey	n/a
LC_096	Sovandara Pheanich Co.Ltd	n/a
LC_094	Vong Sambo	n/a
LC_135	Tai Seng Phalit Teuksaat Co., Ltd.	n/a
LC_132	Mr.Long Rin	n/a
LC_095	Mr. Thlang Sarath	n/a
LC_109	Mrs. Hoy Leakhena	n/a
LC_090	Sok Ngoun	n/a
LC_056	Tov Nearyphall	n/a
LC_083	Toeum Sarett	n/a
LC_082	Chea Sokhom	n/a
LC_072	Mrs. Rong Keang	n/a
LC_108	Mr. Poav Dort	n/a
LC_088	Mr.Touch Sithy	n/a
LC_085	Mrs. Heak DaraSamphors	n/a
LC_084	Mr. Men Ngouk	n/a
LC_078	Mrs. Chea Chhunlim	n/a
LC_081	Frong Nasy Co. Ltd	n/a
LC_107	Chea Sambou	n/a
LC_060	Ouknha Lim Heng	n/a

LC_031	Mak Thun	n/a
LC_032	Mak Thun	n/a
LC_102	Dy Pisey	0
LC_021	Mrs.Ngin Vanna	0
LC_077	Mr. Kho Bunheat	n/a
LC_005	Mrs. Chan Nary	0
LC_127	Mr. Sim Pheakdey	n/a
LC_106	Mr. Tho Sopheak	n/a
LC_101	Dy Pisey	0
LC_097	Nob Sida	n/a
UL_008	Vorn Bros	n/a
LC_058	Sear Ben	n/a
LC_055	Khun Appivath Co.Ltd	n/a
LC_074	Mr. Leang Davich	n/a
LC_137	Mean Rithy	n/a
LC_059	Eng Kang Development Coperation and Construction Co.Ltd	n/a
LC_120	Khoo Meng Huot Co.Ltd	n/a
LC_043	Mr. Cheak Kimly	n/a
LC_044	Mr. Sous Pouy	n/a
LC_138	Chheng Sokunthea	n/a
LC_140	Pen Savann	n/a
LC_141	Nei Chandoeun	n/a
LC_142	Heng Sivaro	n/a
LC_098	Nong Naret	n/a
LC_139	Mrs. Siev Sreymean	n/a
LC_143	SOMA FARM ( CAMBODIA )	n/a
LC_144	Un Bunnat	n/a
LC_145	Sok Sophara	n/a
LC_063	Kampot Port Co., Ltd.	n/a
LC_146	Cheang Choun	n/a
LC_147	moy phallang	n/a
LC_148	Long Mab	n/a
LC_149	Moy Buheng	n/a
LC_150	Chea Sambo	n/a
UL_009	Seav Hout	n/a
LC_151	Ou Sarim	n/a
LC_152	Phon KimLong	n/a
LC_158	Lim Heng Group	n/a
LC_153	Eng Chhayhout	n/a
LC_154	Chim Sideth	n/a
LC_157	Mrs. Va Pisal	n/a
LC_124	Ouknha Kok An	n/a
8	Kampong Cham Water Supply	n/a
LC_155	Mrs. Phoung Maly	n/a
LC_156	Mrs. Meas Channa	n/a
LC_159	Mrs Eng Saroun	n/a
LC_161	Mr. Por Pouch	n/a
LC_162	Mr. Sear Seangheng	n/a
LC_165	Mr. Moy Sophon	n/a
LC_166	Mr. Kang Senkosal	n/a
LC_121	Tho Mak Import Export and Construction Co.Ltd	n/a
LC_163	Mrs. Chea Savoeun	n/a
LC_167	Mrs. Srun Srey Oun	n/a
LC_168	Mr. Yong Sambath	n/a
LC_169	Mr. Chrek Bo	n/a
LC_160	Mr. Tob Sophal	n/a
LC_170	PHNOM PENH SEZ Co., Ltd.	n/a
LC_001	Mekong Portable Co.Ltd	n/a
LC_171	Mr. Mean Phouen	n/a
LC_164	Mr. Sreav Chek	n/a
LC_171	Mr. Say Hong	n/a
LC_125	Ly Dara	n/a
LC_172	Mr. Khegn Tai Veng	n/a
LC_173	Mrs. Seang Nakea	n/a
LC_174	Mr. Pen Makaravuth	n/a
LC_022	Mr.Lang Hav	n/a

LC_004	Mr. Nget Sothy	0
LC_130	Mrs. Chhuon Florina	n/a
LC_007	Khenh Tayveng	n/a
LC_131	Mr. Seng You	n/a
LC_006	Mrs.Chan Nary	0
LC_042	Mr. Hem March	n/a
LC_175	Mr. Liv Chung Chamnan	n/a
LC_040	Mr. Oum Chanto	n/a
LC_038	Mr. Lay Longdy	n/a
LC_176	Mr. Leng Simtheng	n/a
LC_009	Kin Sokhom	0
LC_177	Mr. Khom Menghong	n/a
LC_182	Mr. Moeu Mean	n/a
LC_017	Mr. Meng Lai	n/a
LC_111	Mr. Chea Veng	n/a
LC_029	Mrs.Theng Dany	0
LC_010	Mr. Lak Mengly	0
LC_178	Mr. Pech Chhoeun	n/a
LC_180	Mr. Meng Songhak	n/a
LC_181	Mr. Nuon Sophanara	n/a
LC_064	Mrs. Ing Torn	n/a
LC_179	Mr. Tit Sarou	n/a
LC_053	Mrs. Lim Muy	n/a
LC_092	Mrs. Um Someth	n/a
LC_091	Mr. Khun Lam	n/a
LC_075	Mr. Chin Ratha	n/a
LC_034	Nun Reaksmey	n/a
LC_002	Prey Kob Construction Co.Ltd	n/a
LC_049	Mr. Eang Mab	n/a
LC_054	Mrs. Pom Chab	n/a
LC_051	Mr. Chhel Rithy	n/a
LC_047	Mr. Tong Sophea	n/a
LC_046	Mr. Sang Vuthy	n/a
LC_066	Vong Sophoan	n/a
LC_080	Vat Sovannary	n/a
LC_014	Rom Arun	n/a
LC_016	Horm Ngoun	n/a
LC_045	Borey Kamkior Co.Ltd.	n/a
LC_062	Mrs.An Mouy Kan	n/a
LC_027	Mrs.Heng Leaksey	0
LC_126	Sothevy Lungvek Apivorth Co.,Ltd.	n/a
LC_023	Mrs. Chea EngLay	n/a
LC_052	Meas Vanthoeun	n/a
LC_110	Pouk District Water Supply Co.,Ltd.	n/a
13	Modulkiri Public Water Supply	n/a
LC_128	Mr.Amnot Viriya	n/a
LC_123	Ket Construction Co.Ltd	n/a
LC_134	Chhorn Dalis	n/a

Indicator 26 : Houses of licensed area



Current Period

- Siem Reap Water Supply Authority (SRWSA)   ■ Preah Sihanouk Water Supply   ■ Kampot Water Supply   ■ Pursat Water Supply
- Battambang Water Supply   ■ Kampong Thom Water Supply   ■ Svay Rieng Water Supply   ■ Stung Treng Water Supply
- Stong Water Supply (in K. Thom)   ■ Tang Krasang Water Supply (in K. Thom)   ■ យុនអភិវឌ្ឍន៍   ■ យុនអភិវឌ្ឍន៍   ■ ក្រុមហ៊ុនភូមិនិមិត
- ក្រុមហ៊ុនភូមិនិមិត   ■ ក្រុមហ៊ុននាយណាខន[ស្រុកសំរោង]   ■ ក្រុមហ៊ុននាយណាខន[ស្រុកសំរោង]   ■ Chhorn Dalis   ■ Heang Dara
- Mrs.Kry Kaovney   ■ Leng Khiev   ■ Mr. Srun Bunpor   ■ Mr.Nob Sinat   ■ Mr. Chea Kheng   ■ Mrs. Sek Kong   ■ Golden Bull Co., Ltd.
- Phae Dalin   ■ Tun Leakhena   ■ Ngov Chhorvorn   ■ Nun Reaksmey   ■ Mrs. Uy Sokha   ■ Mr. Srey Sokhom   ■ Mr. Seang Sengheab
- Mr. Chea Sron   ■ Mr. Eng Chayhout   ■ Mr. Soung Sarath   ■ Ann Ko Water Suplly Co.Ltd   ■ Vong Reakmey   ■ Chhun Sarin
- Mr. Try Yousith   ■ Mr. Chun Vanthorn   ■ Mrs. Em Sophy   ■ Mr. Lim Sreng   ■ LYP Group   ■ Sang Seab   ■ Seang Kimsreng
- Neana KIKemEna   ■ Sok Nav   ■ Chev Sony   ■ Boeuna Loum   ■ Mrs. Chhuon Florina   ■ Mr. Ev Mao   ■ Mr. Tak Chan Kouy

▲ 1/5 ▼

Highcharts.com